



STREET SERIES

Qualified Manufacturer Declared "Replacement Part"

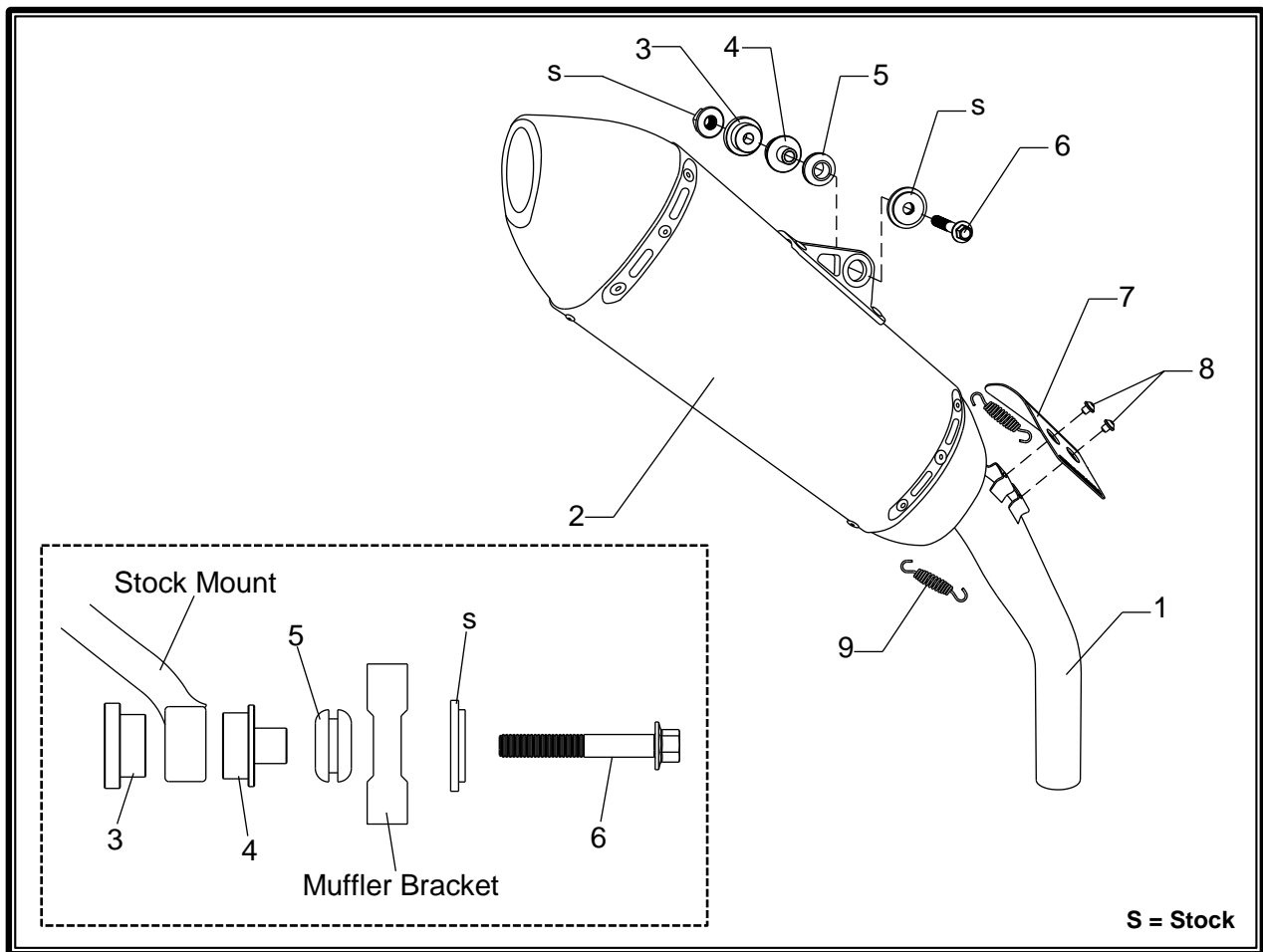
APPLICATION

YEAR	MODEL
2011-2016	Triumph Tiger 800XC

PRODUCT

198002D520	RS4 SS Slip-On Exhaust with Stainless Steel Sleeve; Carbon Fiber Endcap
------------	---

- ⚠ In the state of California, it is illegal to modify the emission control system, which includes the fuel injection of any vehicle.
- ⚠ You must know how to remove and replace your stock exhaust in order to install this product otherwise have it installed by a professional mechanic. Keep all stock parts from your existing system as some components may be necessary to install your new Yoshimura exhaust depending on the application.
- ⚠ Read through all instructions before beginning installation. Exhaust system can be extremely hot. Let motorcycle cool down before beginning installation. Always wear hand and eye protection and take precautionary measures to avoid injury.



No.	Part #	Description	Qty
1	19800-435	Yoshimura Tailpipe	1
2	198002D520-RMA	Yoshimura Muffer Assembly	1
3	ALS-041	Aluminum Spacer	1
4	ALS-040	Aluminum Spacer	1
5	Z1022	Rubber Grommet	1
6	M8X55H	8mm x 55mm Flanged Hex Bolt	1
7	19800-HS	Yoshimura Heatshield	1
8	RC116HSB-BK	6mm x 8mm Button Head Screw	2
9	RACE-SPS-1	Medium Spring	2
**	ST-200	Spring Puller Tool	1
**	17029	Yoshimura Sticker Sheet	1

-TOOLS REQUIRED-

*Metric Socket Set • Combination Wrench Set • Torque Wrench
Metric Allen Wrench Set • Screwdriver*

-REMOVAL-

- 1. Loosen the stock exhaust clamp on the stock header.**
- 2. While securely supporting the stock muffler, remove muffler mount bolt and carefully slide the stock muffler assembly out of the stock header.**
- 3. Remove the (2) stock rubber grommets from the muffler mount in the frame.**

-INSTALLATION-

- 1. Install provided rubber grommet into Yoshimura muffler bracket.**
- 2. Install aluminum spacers provided in the kit as shown in the parts diagram into stock muffler mount.**
- 3. Install Yoshimura muffler assembly by sliding into the stock header. Secure Yoshimura muffler to the stock muffler mount using the hardware provided in the kit. See diagram for proper orientation and order of hardware.**

Note¹: The stock exhaust gasket in the header will be re-used. Inspect and replace if necessary.

Note²: It may be necessary to remove the exhaust springs to rotate muffler and tailpipe independently to achieve desired alignment.

- 4. Torque muffler mount bolt to factory specification.**
- 5. Re-install exhaust springs if removed in Step 3.**
- 6. Torque exhaust clamp to factory specification.**
- 7. Install Yoshimura heatshield using the (2) provided heatshield bolts.**
- 8. Fitment check and Notes.**
 - a. Before starting motorcycle, check for proper clearance between new exhaust system and rear suspension (i.e. tire, swing-arm, brake, rear shock, engine, and etc.) If any problem is found, please carefully follow through the installation steps again. If problem still persists, please call Yoshimura Tech Department at (800) 634-9166 / in CA (909) 628-4722.**
 - b. It is recommended that the muffler and tailpipe be wiped down with rubbing alcohol to remove oil and fingerprints. This will help prevent tarnishing of the finish after the exhaust is heated up.**
 - c. Note: After starting motorcycle, it is normal for new exhaust system and muffler to emit smoke until oil residue burns off.**