

# **HYPERPRO**

## **STEERING DAMPER MOUNTING KIT**

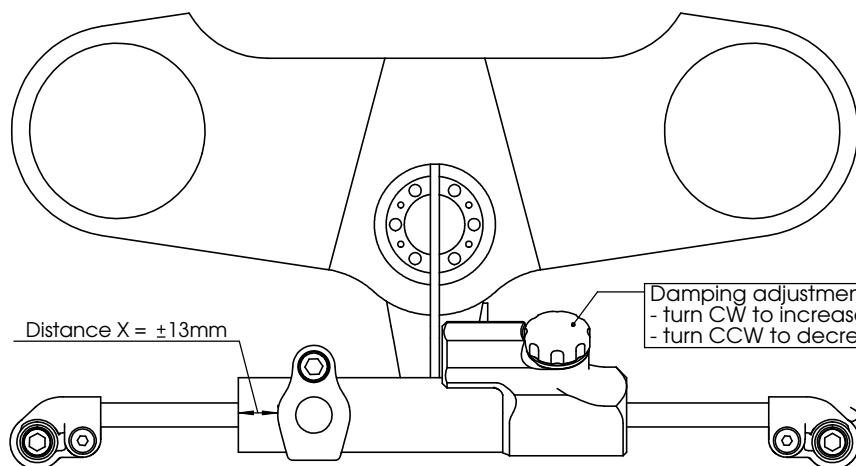
for

**MV Agusta F4 750 / 1000**  
**Models 1999->**

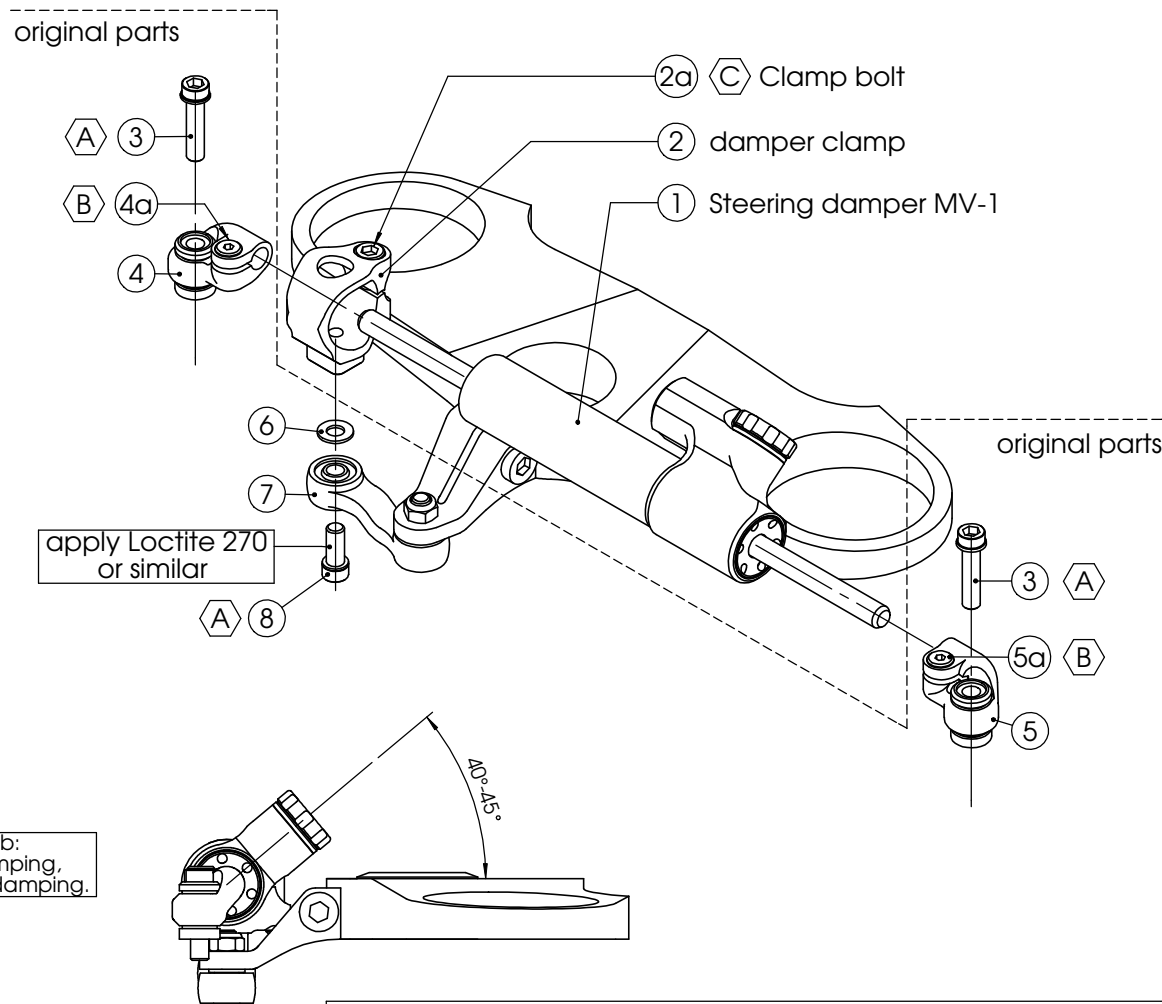
### **MK-MV10-T001 PART LIST**

Steering damper MV-1	1	-	-
Damper Clamp (MP-TAMK31-2)	1	-	-
-	-	-	-
-	-	-	-
-	-	-	-
-	-	-	-
-	-	-	-
-	-	-	-

ALL IDEAS, DESIGNS ARRANGEMENTS AND PLANS INDICATED OR REPRESENTED BY THIS DRAWING ARE OWNED BY HYPERPRO AND WERE CREATED, EVOLVED AND DEVELOPED FOR USE ON AND IN CONNECTION WITH THE SPECIFIC PROJECT. NONE SUCH IDEAS, DESIGNS, ARRANGEMENTS OR PLANS SHALL BE USED BY OR DISCLOSED TO ANY PERSON, FIRM OR CORPORATION FOR ANY PURPOSE WHATSOEVER WITHOUT THE WRITTEN PERMISSION OF HYPERPRO.



**lift the top triple clamp and  
remove the original steering damper  
(see service manual)**



TORQUES  
A: 8-10Nm  
B: 4-6Nm  
C: 6Nm / 53Lbs.In / 4.4Lbs.Ft

D: 8Nm / 70Lbs.In / 5.9Lbs.Ft  
E: 55Nm / 486Lbs.In / 40Lbs.Ft  
F: Factory torque (see service manual)

# **HYPERPRO**

## **STEERING DAMPER MOUNTING KIT**

**for**

**MV Agusta F4 750 / 1000  
Models 1999->**

### **MK-MV10-T001 INSTALLATION INSTRUCTIONS**

#### ***In general:***

HYPERPRO can not be held responsible in any way for any form of physical, material, financial or other damage arising from use, assembly or overhaul of HYPERPRO products. HYPERPRO reserves the right to make changes without prior notice.

This product is ONLY TO BE INSTALLED BY A PROFESSIONAL MECHANIC.

This product is only to be used for the motorcycle brand, model and year stated specifically on top of the pages of this manual.

DO NOT attempt to install this product on motorcycles from any different brand, model and/or year than stated on the pages of this manual.

DO NOT use this kit for cars, boats, jet skis, snowmobiles, ATV's, aircraft, hovercrafts or any other vehicle and/or purpose.

HYPERPRO steering dampers are FOR RACE USE ONLY, NOT FOR HIGHWAY USE!

#### ***Before installation:***

- Please read the entire manual carefully before starting the installation!
- Check if you have all the tools required. Good tools are a must.
- Protect your bike at the most important places in and around the work area (e.g. tank, fairing, frame, etc.), with a blanket, towel or similar.

#### ***During installation:***

- Check all operations and parts carefully before, during and after performing each step.
- Clean all surfaces that are required for fitting parts together or for applying self adhesives or loctite, thoroughly with contact cleaner or another degreaser, unless otherwise stated.
- Be careful not to damage or scratch any part of your bike.
- ALWAYS work relaxed and concentrated!! It is very easy to damage something or make a mistake.

#### ***After installation:***

- Check and make sure that there is no contact between any part of the steering damper kit and any part of the motorcycle. The kit should not hit anything. Steering movement should not be limited by the steering damper. If the steering movement is limited, adjust the position of the tube in the clamp until steering movement is normal again. Do not forget to tighten the clamp bolt again!
- ALWAYS check the steering movement and feeling before each ride !
- FIRST RIDES: Start with the damper turned fully open (turn adjuster knob fully counter clockwise). Start adjusting in between rides with steps of MAX. 2 CLICKS (0.25 TURN) EACH TIME, until the damper is working satisfactory for your riding style.
- NEVER USE MAXIMUM SETTING, ALWAYS OPEN AT LEAST 2 CLICKS (0.25 TURN).
- WARNING ! DAMPER HAS AN ACTIVE / SPEEDSENSITIVE DAMPING SYSTEM;
  - Steering with NORMAL MOVEMENT should be FREE !!
  - Steering with FAST MOVEMENT should be CONTROLLED BY DAMPER !!
- HYPERPRO uses a special seal to reduce friction. The seal uses an oil film to work properly. It is normal that some oil can appear on the pistonrod.
- Damper works with oil: DAMPING CAN BE HARDER AT LOWER TEMPERATURES!

#### ***Step 1: remove the original steering damper***

See the service manual.

Make sure the bike is properly supported and protect the front of the tank.

Loosen and remove the steering damper mount bolts (3) from the left (4) and right eye mounts (5).

Loosen the 3 clamp bolts of the top triple clamp and lift the triple clamp from the bike.

Loosen the bolt (8) from the bottom of the link (7) and keep the washer (6).

Loosen the rod clamp bolts (4a) and (5a) and remove the rod ends from the original damper.

#### ***Step 2: install the steering damper and clamp***

See the pictures on page 1:

Slide the steering damper tube (1) into the damper clamp (2) until the distance X of  $\pm 13\text{mm}$  is reached. Rotate the body  $\pm 45^\circ$  upwards to the front and tighten the clamp bolt (2a) to a torque of 6Nm/53Lbs.In/4.4Lbs.Ft.

Apply Loctite 270 or similar to the bolt (8) and mount the damper clamp (2) + washer (6) to the link (7). Use a torque of 8-10Nm.

Reassemble the triple clamp onto the bike, tighten the clamp bolts according to the service manual.

Fit the mount eyes (4 and 5) onto the damper rod and fit the bolts (3).

Make sure the rod is centered and tighten the rod clamp bolts (4a and 5a) to a torque of 4-6Nm.

Tighten the mounting bolts (3) to a torque of 8-10Nm.

Check if the damper is level horizontally and aligned to the bike.

Check if the damper does not touch anything (e.g. tank) when steering from left to right.

Check if the bike can make it's full steering angle from left to right.