



RESEARCH&DEVELOPMENT OF AMERICA, INC.

5420 DANIELS STREET STE A, CHINO CA 91710 · (800) 634-9166 · (909) 628-4722 · FAX (909) 591-2198

WWW.YOSHIMURA-RD.COM

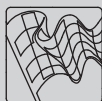
Signature Series

Qualified Manufacturer Declared "Replacement Part"

2019

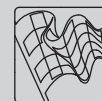
**Kawasaki KX450F
244720D320 (SS/AL)**

Stainless Steel RS-4 Full-System



Signature Series systems are:

- CARB/EPA tail-pipe emissions compliant.
- Marked with appropriate EPA noise labels.
- Independent laboratory tested for EPA new vehicle noise compliance.

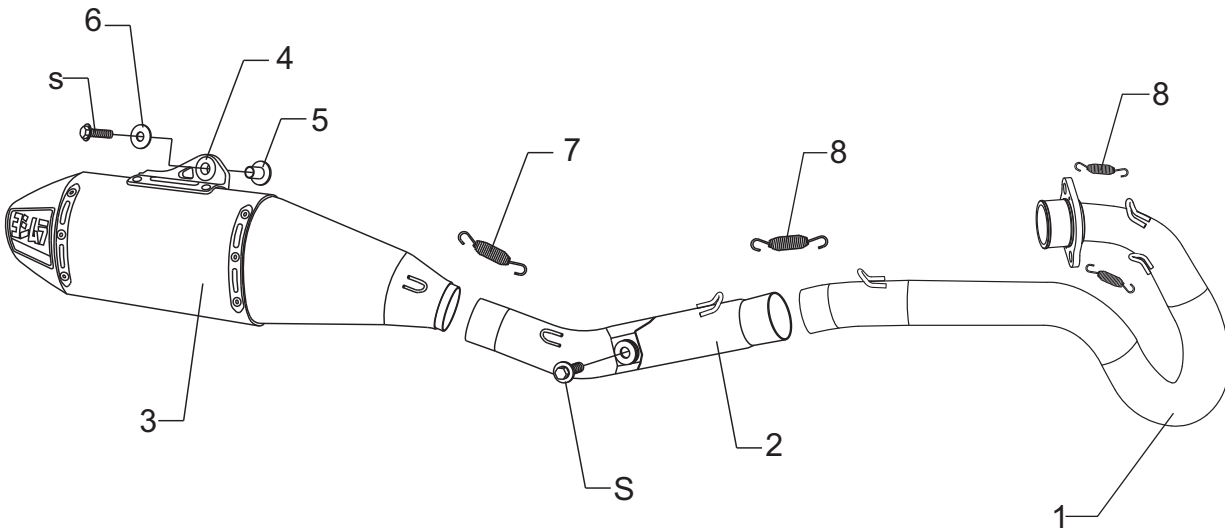


CAUTION: The muffler packing on this system **MUST** be replaced every 6-8 hours of use, or every 1-2 motos. Failure to follow recommended muffler re-packing interval can cause muffler damage and may void the warranty.



NOTE: IN THE STATE OF CALIFORNIA, IT IS ILLEGAL TO MODIFY THE EMISSION CONTROL SYSTEM, WHICH INCLUDES THE FUEL INJECTION OF ANY VEHICLE.

Assembly Diagram



S = Stock

No.	Item	Description	Qty.
1	24472-104F	Yoshimura SS Header, Kit	1
2	24472-144	Yoshimura SS Tailpipe	1
3	244720D320-RMA	Yoshimura Muffler Assembly	1
4	Z1022	Rubber Grommet	1
5	ALS-002	Aluminum Spacer	1
6	8MMWASHERL	8mm Large Washer	1
7	RACE-SPX-1	Small Exhaust Spring	1
8	RACE-SPS-1	Medium Exhaust Spring	3
**	INS-U-2	Low Volume Sound Insert (Installed)	1
**	ST-200	Spring Puller Tool	1
**	347PLUG	Wash Plug	1
**	17100	Sticker Sheet	1
OPTIONAL REPLACEMENT PARTS			
REPACK-RS4-PK29		Re-pack Kit	
SA-04-K		Spark Arrester	

** Not shown on diagram.

CAUTION: Exhaust system can be extremely hot. Let motorcycle cool down before beginning installation. Always wear hand and eye protection and take precautionary measures to avoid injury.

WARNING: Always properly support vehicle with a stand and/or lift when servicing or performing any work. Unstable vehicles may present dangerous conditions and may cause property damage and/or personal injury.

NOTE: Read through all instructions before beginning installation.

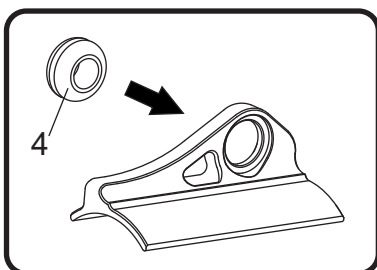
Removal

1. Remove the right side number plate.
2. Loosen exhaust clamp between the stock header and muffler.
3. While securely supporting the stock muffler assembly, remove the muffler chassis mount bolt and carefully remove the stock muffler.
4. Remove the header nuts and remove the stock header.

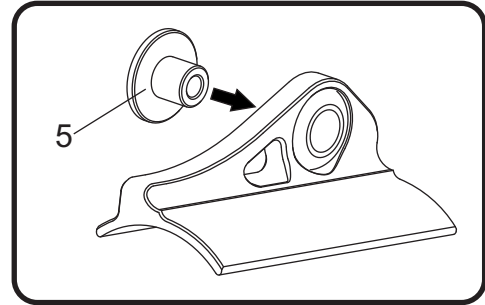
Note: The stock exhaust port gasket will be re-used with the Yoshimura system. Inspect and replace if necessary.

Installation

1. Install (No. 1) 24472-104F, header kit using the stock header nuts. Do not torque at this time.
2. Install (No. 2) 24472-144, tailpipe inlet onto (No. 1) 24472-104F, header outlet. Align chassis mount bracket to chassis and secure using the stock chassis mount bolt. Do not torque at this time.
3. Install (No. 4) Z1022, rubber grommet into muffler mount bracket.



4. Install (No. 5) ALS-002, aluminum spacer into (No. 4) Z1022, rubber grommet.



5. Install (No. 3) muffler, onto (No. 2) 24472-144, tailpipe outlet. Align muffler mount bracket to muffler mount and secure using stock muffler mount bolt and (No. 6) 8MMWASHERL, 8mm large washer. Torque muffler mount bolt to factory specification.
6. Torque the stock tailpipe chassis mount bolt to factory specification.
7. Torque header nuts to factory specification.
8. Install (No. 7) RACE-SPX-1, small exhaust spring between muffler and tailpipe.
9. Install (No. 8) RACE-SPS-1, medium exhaust springs between tailpipe to header connection and header flange to header.
10. Re-install right side number plate.
11. Before starting vehicle, check for proper clearance between new exhaust system and rear suspension (i.e. tire, swingarm, brakes, rear shock, and etc.) If any problem is found, please carefully follow through the installation steps again. If problem still persists, please call Yoshimura Tech Department at (800) 634-9166 / in CA (909) 628-4722.
12. It is recommended that the muffler and tailpipe be wiped down with rubbing alcohol to remove oil and fingerprints. This will help prevent tarnishing of the finish after the exhaust is heated up.

Note: After starting motorcycle, it is normal for new exhaust system and muffler to emit smoke until oil residue burns off.