



YOSHIMURA

RESEARCH&DEVELOPMENT OF AMERICA, INC.

5420 DANIELS STREET STE A, CHINO CA 91710 · (800) 634-9166 · (909) 628-4722 · FAX (909) 591-2198

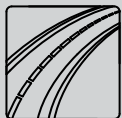
WWW.YOSHIMURA-RD.COM

Street Series

Qualified Manufacturer Declared "Replacement Part"

**2017~2018
Kawasaki Versys-X 300
14360BJ520 (SS/CF)**

**Works Finish
R77 Stainless Steel Slip-On**



All Street Series systems are:

- Slip-on/Bolt-on applications that do not require tampering with the vehicle's emissions control system.
- CARB/EPA tail-pipe emissions compliant.
- Marked with appropriate EPA noise labels.
- Not tested for EPA new vehicle noise compliance.

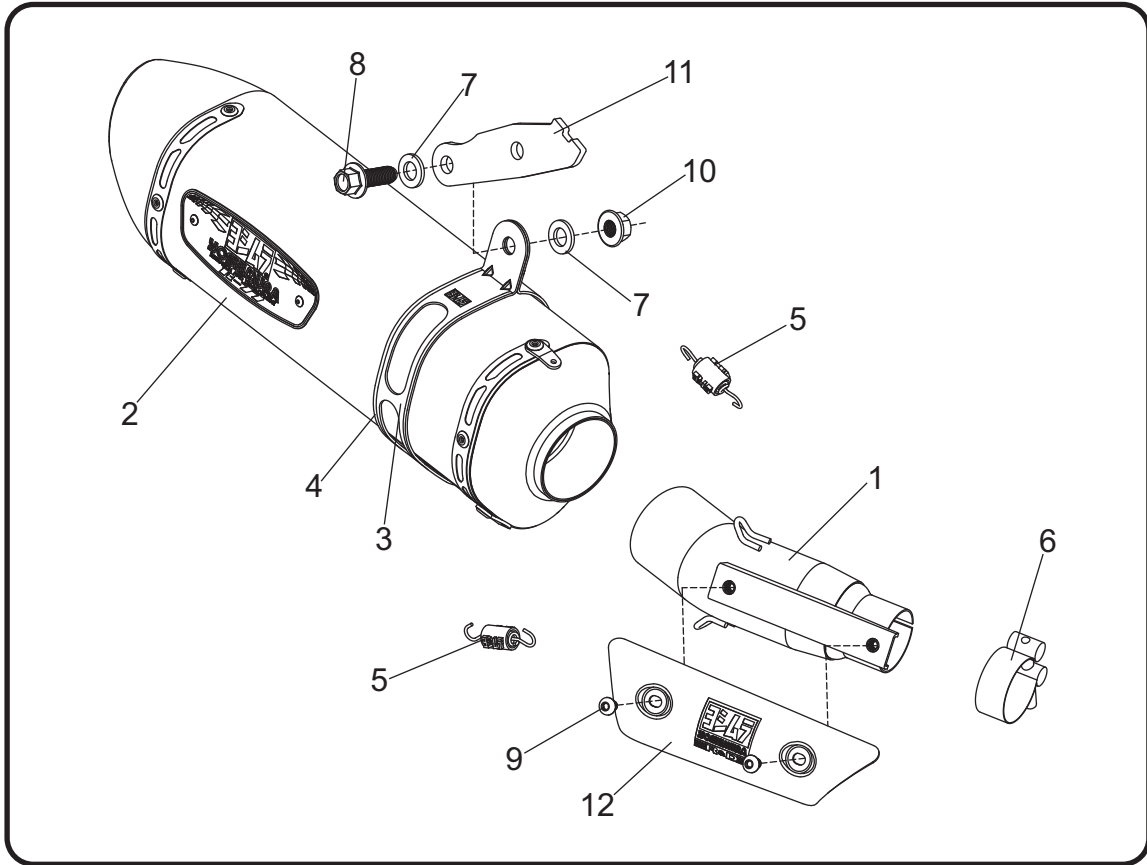


You must know how to remove and replace your stock exhaust in order to install this product otherwise have it installed by a professional mechanic. Keep all stock parts from your existing system as some components may be necessary to install your new Yoshimura exhaust depending on the application. Read through all instructions before beginning installation. Exhaust system can be extremely hot. Let motorcycle cool down before beginning installation. Always wear hand and eye protection and take precautionary measures to avoid injury.



NOTE: IN THE STATE OF CALIFORNIA, IT IS ILLEGAL TO MODIFY THE EMISSION CONTROL SYSTEM, WHICH INCLUDES THE CARBURETORS OF ANY VEHICLE.

Assembly Diagram



No.	Item	Description	Qty.
1	14360-435	Yoshimura Tailpipe	1
2	SRR77M12D	Yoshimura Muffler Assembly	1
3	YM7M-MPCAX	Muffler Clamp	1
4	HT SHLDR77	Muffler Clamp Insulator	1
5	RACE-SPX-1	Small Exhaust Spring	2
6	22055	Exhaust Clamp	1
7	10X20WSH	10mm Washer	2
8	M10X30H	10mm x 30mm Flanged Hex Head Bolt	1
9	RC116HSB	6mm x 8mm Heatshield Screw	2
10	10MMFNUT	10mm Flange Nut	1
11	14360-MBKT	Muffler Bracket	1
12	14360-HS	Heatshield	1
**	SA-16-K	Spark Arrester Kit	1
**	ST-200	Spring Puller Tool	1
**	17029	Sticker Sheet	1

** Not shown on diagram.

CAUTION: Exhaust system can be extremely hot. Let motorcycle cool down before beginning installation. Always wear hand and eye protection and take precautionary measures to avoid injury.

WARNING: Always properly support vehicle with a stand and/or lift when servicing or performing any work. Unstable vehicles may present dangerous conditions and may cause property damage and/or personal injury.

NOTE: Read through all instructions before beginning installation.

Removal

1. Loosen muffler heatshield clamp located behind the front section of the muffler heatshield.
2. Remove the muffler heatshield bolt and remove muffler heatshield by sliding toward the front.
3. Loosen the muffler exhaust clamp and while securely supporting the stock muffler, remove the muffler mount bolt. Carefully remove the stock muffler assembly.

Note: The stock exhaust gasket will not be re-used with the Yoshimura slip-on.

Installation

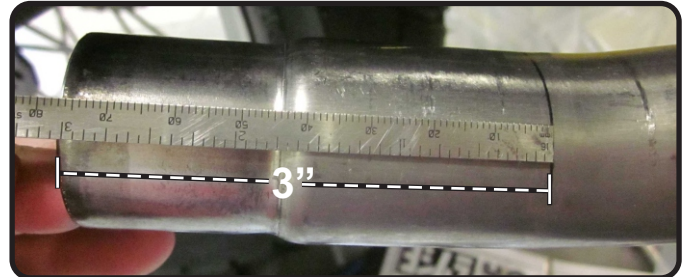
1. Install (No. 11) 14360-MBKT, muffler bracket to the frontside of the stock muffler mount using the stock muffler mount bolt and nut. Torque to factory specification.

Note: The top of the muffler bracket must rest against the bottom of the footpeg bracket.

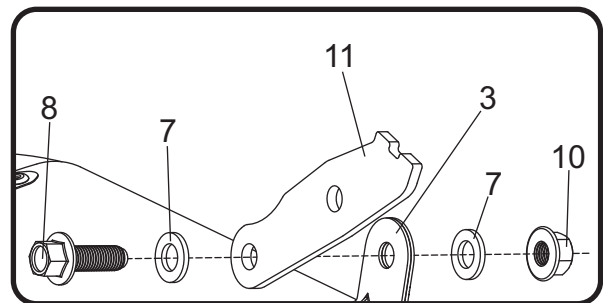


2. Slide (No. 6) 22055, exhaust clamp over (No. 1) 14360-435, tailpipe inlet. Do not torque at this time.
3. Install (No. 1) 14360-435, tailpipe inlet over stock header outlet.

Note: Slide tailpipe approximately 3" over the stock header outlet.



4. Install (No. 2) muffler, over (No. 1) 14360-435, tailpipe outlet.
5. Install (No. 4) HT SHLDR77, muffler clamp heat insulator onto (No. 3) YM7M-MPCAX, muffler clamp. Trim excess muffler clamp heat insulator if necessary.
6. Slide (No. 3) YM7M-MPCAX, muffler clamp over (No. 2) muffler and align muffler clamp to the backside of (No. 11) 14360-MBKT, muffler bracket. Secure using (No. 8) M10X30H, 10mm bolt, (No. 7) 10X20WSH, washers, and (No. 10) 10MMFNUT, flange nut as shown.



7. Torque (No. 6) 22055, exhaust clamp to 8.5 Nm (0.86 kg-m, 6 ft-lb).
8. Install (No. 5) RACE-SPX-1, small exhaust springs between muffler and tailpipe using ST-200, spring puller tool supplied in the kit.
9. Install (No. 12) 14360-HS, heatshield onto (No. 1) 14360-435, tailpipe using (No. 9) RC116HSB, heatshield bolts.

10. Before starting vehicle, check for proper clearance between new exhaust system and rear suspension (i.e. tire, swingarm, brakes, rear shock, and etc.) If any problem is found, please carefully follow through the installation steps again. If problem still persists, please call Yoshimura Tech Department at (800) 634-9166 / in CA (909) 628-4722.

11. It is recommended that the muffler and tailpipe be wiped down with rubbing alcohol to remove oil and fingerprints. This will help prevent tarnishing of the finish after the exhaust is heated up.

Note: After starting vehicle, it is normal for new exhaust system and muffler to emit smoke until oil residue burns off.

Works Finish Care & Maintenance

Before starting vehicle, clean pipe thoroughly using a soft cloth and rubbing alcohol to remove any oil and finger prints.

The color of the exhaust will change once the system has gone through a heat cycle of 15 minutes or more. Color will vary depending on lean/rich conditions.

Clean using a soft cloth and soap. Do not use abrasive materials as it will scratch the surface.

Surface reconditioning services are available to remove scratches and undesirable discoloration due to extreme heat. Contact Yoshimura Tech Department at (800) 634-9166 / in CA (909) 628-4722 for more information.