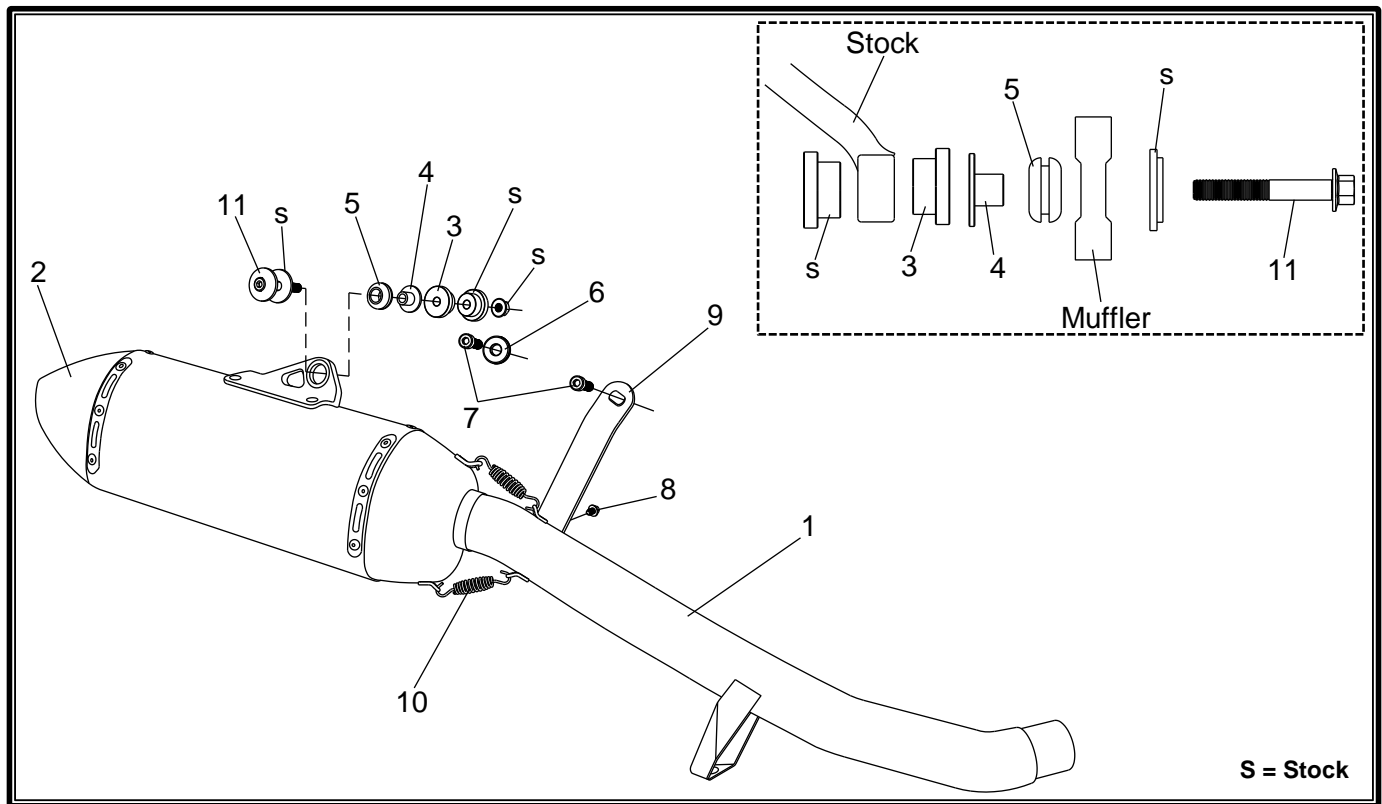


**Qualified Manufacturer Declared "Replacement Part"**

APPLICATION

YEAR	MODEL
2012-2013	Triumph Tiger Explorer
PRODUCT	
192002D520	RS4 SS Slip-On Exhaust with Stainless Steel Sleeve; Carbon Fiber Endcap

!	In the state of California, it is illegal to modify the emission control system, which includes the fuel injection of any vehicle.
!	You must know how to remove and replace your stock exhaust in order to install this product otherwise have it installed by a professional mechanic. Keep all stock parts from your existing system as some components may be necessary to install your new Yoshimura exhaust depending on the application.
!	Read through all instructions before beginning installation. Exhaust system can be extremely hot. Let motorcycle cool down before beginning installation. Always wear hand and eye protection and take precautionary measures to avoid injury.



No.	Part #	Description	Qty
1	19200-435	Yoshimura Tailpipe	1
2	198002D520-RMA	Yoshimura Muffler Assembly	1
3	ALS-041	Aluminum Spacer	1
4	ALS-003	Aluminum Spacer	1
5	Z1022	Rubber Grommet	1
6	5X25SPC	5mm x 25mm Aluminum Spacer	1
7	M8X30	8mm x 30mm Socket Head Cap Screw	2
8	M8X12H	8mm x 12mm Flanged Hex Head Bolt	1
9	19200-BRKT	Tailpipe Bracket	1
10	RACE-SPS-1	Medium Spring	2
11	M8X60H	8mm x 60mm Flanged Hex Head Bolt	1
**	ST-200	Spring Puller Tool	1
**	17029	Yoshimura Sticker Sheet	1

**-TOOLS REQUIRED-**

*Metric Socket Set • Combination Wrench Set • Torque Wrench  
Metric Allen Wrench Set • Screwdriver*

**-REMOVAL-**

- 1. Place bike on center stand.**
- 2. Loosen the stock exhaust clamp on the stock header.**
- 3. While securely supporting the stock muffler, remove muffler mount bolt and carefully slide the stock muffler assembly out of the stock header.**
- 4. Remove the stock rubber bumper off of the stock tailpipe assembly for the center stand.**
- 5. Remove right side passenger foot peg.**

**-INSTALLATION-**

- 1. Install stock rubber bumper onto Yoshimura tailpipe.**
- 2. Install (Z1022) rubber grommet onto Yoshimura muffler bracket.**
- 3. Install (ALS-003) aluminum spacer into (Z1022) rubber grommet as shown in the parts diagram.**
- 4. Remove the stock aluminum spacer in muffler bracket and replace with (ALS-041) aluminum spacer. See diagram for proper orientation and order of hardware.**
- 5. Install Yoshimura muffler/tailpipe assembly by sliding into the stock header. Secure Yoshimura muffler to the stock muffler mount using the provided (M8X60H) bolt, stock washer, and stock nut. Do not torque at this time. See diagram for proper orientation and order of hardware.**  
**Note<sup>1</sup>: The stock exhaust gasket in the header will be re-used. Inspect and replace if necessary.**  
**Note<sup>2</sup>: It may be necessary to remove the exhaust springs to rotate muffler and tailpipe independently to achieve desired alignment.**
- 6. Install (19200-BRKT) tailpipe bracket and (5X25SPC) aluminum spacer between the frame and passenger peg using the two (M8X30) foot peg bolts provided in the kit. See diagram for proper orientation. Do not torque at this time.**  
**Note: (5X25SPC) aluminum spacer will not be used if pannier bracket is installed between the passenger peg and frame.**
- 7. Secure (19200-BRKT) tailpipe bracket to tailpipe using the (M8X12H) bolt. Do not torque at this time.**
- 8. Torque muffler mount bolt to factory specification.**
- 9. Re-install exhaust springs if removed in Step 5.**
- 10. Torque (M8X30) foot peg bolts to factory specification.**
- 11. Torque (M8X12H) tailpipe bracket bolt to 16 Nm. (1.6 kg-m, 12 lb-ft)**
- 12. Torque exhaust clamp to factory specification.**

**13. Fitment check and Notes.**

- a. Before starting motorcycle, check for proper clearance between new exhaust system and rear suspension (i.e. tire, swing-arm, brake, rear shock, engine, and etc.) If any problem is found, please carefully follow through the installation steps again. If problem still persists, please call Yoshimura Tech Department at (800) 634-9166 / in CA (909) 628-4722.**
- b. It is recommended that the muffler and tailpipe be wiped down with rubbing alcohol to remove oil and fingerprints. This will help prevent tarnishing of the finish after the exhaust is heated up.**
- c. After starting motorcycle, it is normal for new exhaust system and muffler to emit smoke until oil residue burns off.**