

SUZUKI V-STROM1000 ABS STREET SPORTS SLIP-ON HEPTA FORCE STAINLESS END / CARBON END

Be sure to read the instruction carefully before starting the work. It is necessary to follow the contents to install Yoshimura product.

- ! CAUTION** Before beginning installation, let motorcycle cool down.
- ! CAUTION** Be sure not to damage each part during installation.
- ! CAUTION** Torque specification must be followed. If neglected, it may cause bolt and nut to fall off and damage to Yoshimura product and motorcycle.
- ! CAUTION** Metal Magic sleeve is coated with heat-resistant paint. Handle with care not to be hit or scratched by surroundings as the coating may come off. When cleaning silencer, use soft cloth with dish soap but do not use metal polish or chemical cleaner.
- ! CAUTION** Titanium Blue sleeve is colored by anodizing. Handle with care as the color may change. When cleaning silencer, use soft cloth with dish soap but do not use metal polish or chemical cleaner.

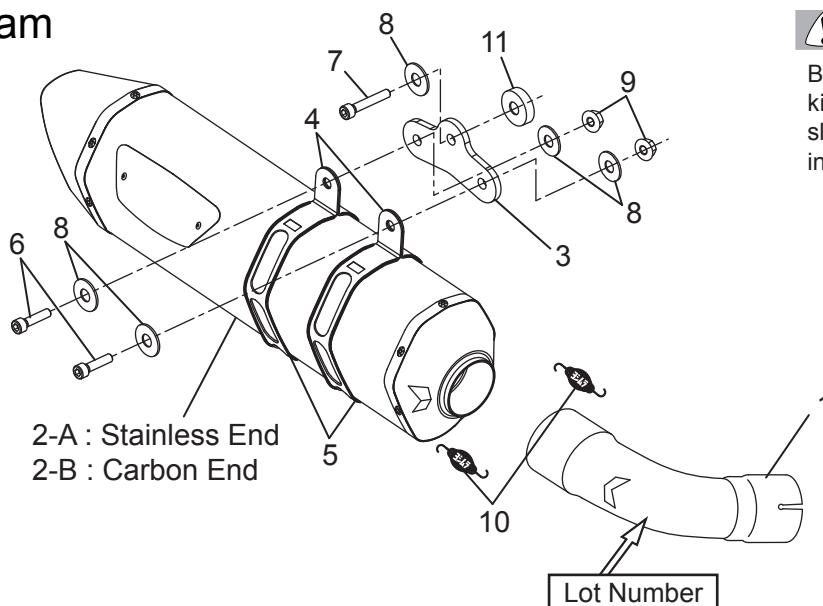
1. Product Information :

Description	SUZUKI V-Strom1000 ABS Street Sports Slip-On Hepta Force Stainless End / Carbon End		Part Number	Stainless Sleeve (SSS) : 170-195-L05C0
Applicable Model	SUZUKI V-Strom1000 ABS		(Stainless End)	Metal Magic Sleeve (SMS) : 170-195-L02C0
Cyclone Type	S195SHFC1			Titanium Sleeve (STS) : 170-195-L08C0
Main Material	Stainless steel			Titanium Blue Sleeve (STBS) : 170-195-L06C0
Weight [STD: 5.4kg]	Stainless End	(SSS)&(SMS) : 3.9kg	Part Number	Stainless Sleeve (SSC) : 170-195-L05G0
		(STS)&(STBS) : 3.7kg		Metal Magic Sleeve (SMC) : 170-195-L02G0
	Carbon End	(SSC)&(SMC) : 3.9kg		Titanium Sleeve (STC) : 170-195-L08G0
		(STC)&(STBC) : 3.7kg		Titanium Blue Sleeve (STBC) : 170-195-L06G0

2. Contents :

No.	Descriptions	Part No.	Q'ty	No.	Descriptions	Part No.	Q'ty
1	Tailpipe	115-195-L000	1	3	Silencer Bracket	161-195-0200	1
2-A	Silencer Assy (SSS)	1A6-195-L05C0	1	4	Silencer Band	162-50R-J500	2
	Silencer Assy (SMS)	1A6-195-L02C0		5	Silencer Band Rubber	896-016-0835	2
	Silencer Assy (STS)	1A6-195-L08C0		6	Cap Bolt M8x20	800-208-5020	2
	Silencer Assy (STBS)	1A6-195-L05C0		7	Cap Bolt M8x50	800-208-5050	1
2-B	Silencer Assy (SSC)	1A6-195-L05G0		8	Washer M8x26	812-108-2600	5
	Silencer Assy (SMC)	1A6-195-L02G0		9	Flange Nut M8	823-008-1250	2
	Silencer Assy (STC)	1A6-195-L08G0		10	Exhaust Spring	118-001-0000	2
	Silencer Assy (STBC)	1A6-195-L05G0		11	Spacer 8-30-5	850-008-3005	1

Parts Diagram



! CAUTION

Because of no tailpipe dB killer on this Street Sports slip-on, the EEC Approval is invalid.