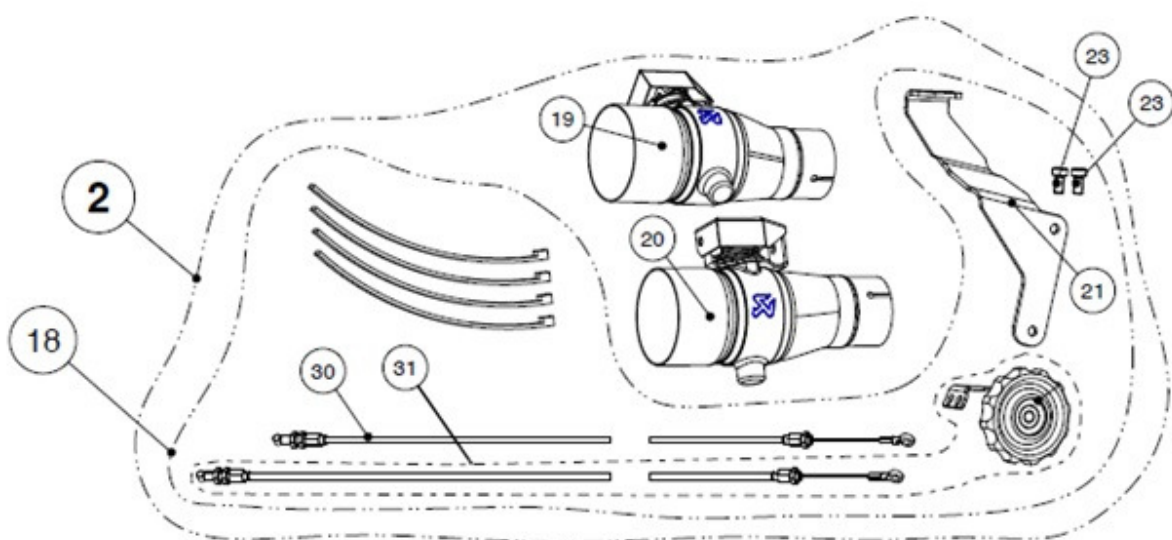


**WARNING! EC TYPE APPROVAL IS NOT VALID
WHEN OPTIONAL VALVE SYSTEM IS INSTALLED!**



| No. | SALES CODE | DESCRIPTION | QTY. |
|-----|------------|----------------------|------|
| 2 | P-HDV2/1 | valve set | 1 |
| 18 | P-HF623 | fitting kit | 1 |
| 19 | LP-HDDY2/1 | link pipe with valve | 1 |
| 20 | LP-HDDY3/1 | link pipe with valve | 1 |
| 21 | P-X76 | bracket SS | 1 |
| 23 | P-FB31 | bolt | 2 |
| 30 | P-HF637 | cable wire L=1560mm | 1 |
| 31 | P-HF638 | cable wire L=1610mm | 1 |