



# YOSHIMURA

RESEARCH&DEVELOPMENT OF AMERICA, INC.

5420 DANIELS STREET STE A, CHINO CA., 91710 · (800) 634-9166 · (909) 628-4722 · FAX (909) 591-2198

[www.yoshimura-rd.com](http://www.yoshimura-rd.com)

## **RACE SERIES**

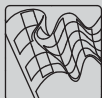
Qualified Manufacturer Declared "Modified Part"

**2021 ~ 2022  
Yamaha MT-09**

**13992AP521 (SS/CF)**

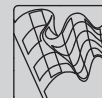
**AT2 Stainless Steel Full-System**

**FOR CLOSED COURSE COMPETITION ONLY; NOT INTENDED FOR STREET USE**



Race Series systems are:

- NOT CARB/EPA tail-pipe emissions compliant.
- NOT street legal.
- For "Closed Course Competition" use only.

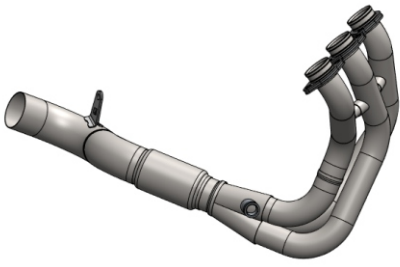


*You must know how to remove and replace your stock exhaust in order to install this product otherwise have it installed by a professional mechanic. Keep all stock parts from your existing system as some components may be necessary to install your new Yoshimura exhaust depending on the application. Read through all instructions before beginning installation. Exhaust system can be extremely hot. Let motorcycle cool down before beginning installation. Always wear hand and eye protection and take precautionary measures to avoid injury.*



NOTE: IN THE STATE OF CALIFORNIA, IT IS ILLEGAL TO MODIFY THE EMISSION CONTROL SYSTEM, WHICH INCLUDES THE CARBURETORS OF ANY VEHICLE.

x1



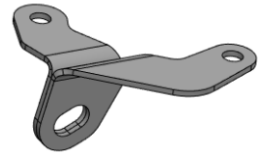
13992-401-1D  
Yoshimura Header

x1



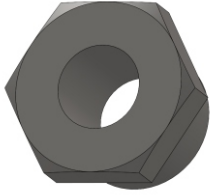
13992AP520-RMA  
Yoshimura Muffler

x1



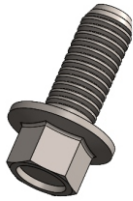
13992-TPBKT-1  
Tail Pipe Bracket

x1



OXYBA12X125SS  
O2 Sensor Adaptor

x1



M8X30H  
8mm x 30mm  
Flanged Hex Head

x1



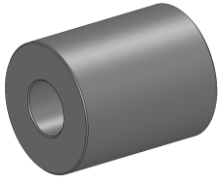
M8X20H  
8mm x 20mm  
Flanged Hex Head

x2



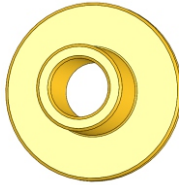
8MMNUT  
8mm Flange Nut

x1



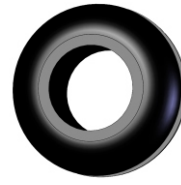
10X25X30SPCR  
Aluminum Chassis Spacer

x1



ALS-003  
Aluminum Spacer

x1



Z1022  
Rubber Grommet

x1



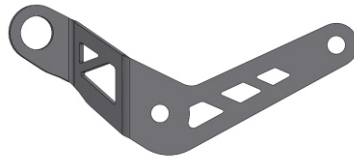
RACE-SPX-2  
Small Spring

x1



ST200  
Spring Puller Tool

x1



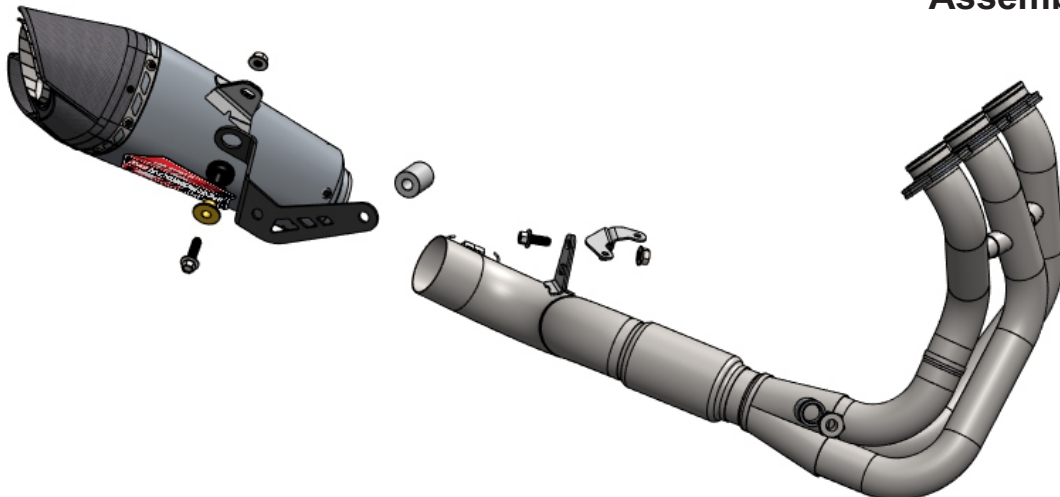
13992-MBKT-1  
Muffler Bracket

x1



B6450  
O2 Sensor Extension Wire

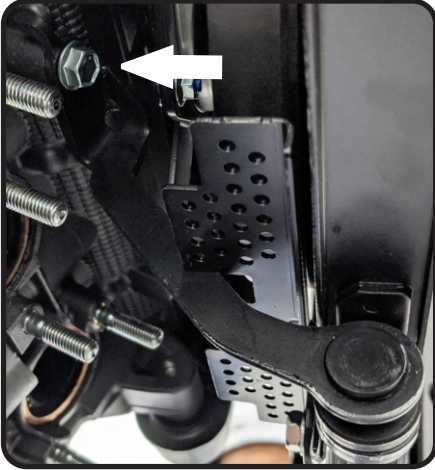
### Assembly Diagram



## Removal

1. Remove O2 sensor from the stock header.
2. Remove header nuts.
3. Remove stock radiator bracket by removing the stock bolt.

Note: Place bracket and bolt aside as it will be reinstalled later.



4. While securely supporting the muffler, remove the muffler chassis bolts and carefully remove the stock muffler/header assembly.

Note: Exhaust port gaskets will be re-used with the Yoshimura exhaust system. Inspect and replace if necessary.

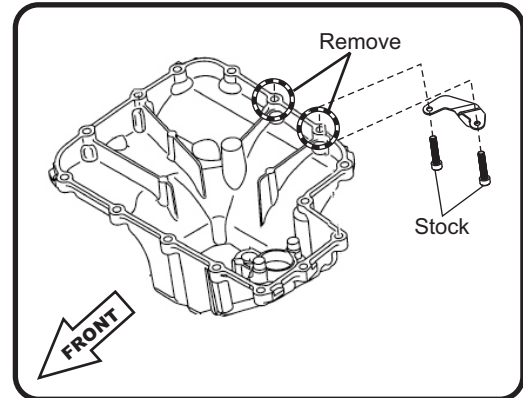
5. Remove stock exhaust bracket by locating the stock bolt and nut near the left foot peg and to left of the muffler chassis bolt.

Note: The stock bolt and nut securing the stock bracket will be re-used with the Yoshimura exhaust system.

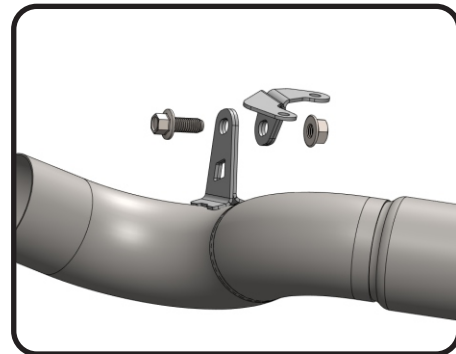


## Installation

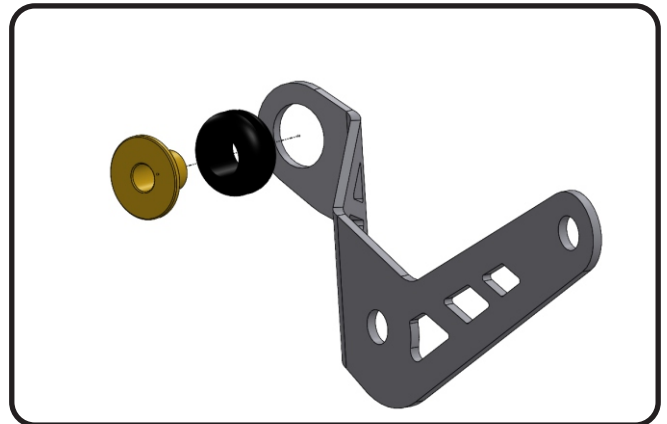
1. Remove the two right-rear oil pan bolts and install 13992-TPBKT-1, tailpipe bracket using the stock oil pan bolts. See assembly diagram for proper orientation of tailpipe bracket.



2. Install 13992-401-1D, Yoshimura header using the stock header nuts. Do not torque at this time.
3. Using a M8X20H, 8mm bolt and a 8MMNUT, 8mm flange nut install the 13992-401-1D, Yoshimura header onto the backside of the 13992-TPBKT-1, oil pan bracket. Do not torque at this time.



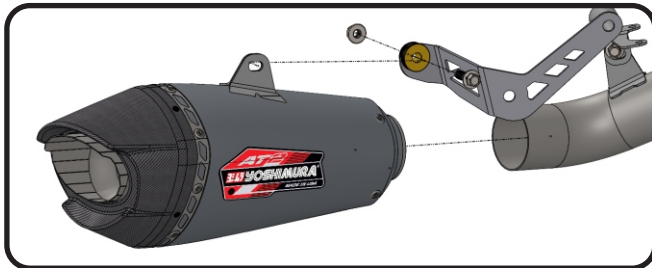
4. Install Z1022, rubber grommet and ALS-003, aluminum spacer onto 13992-MBKT-1, muffler bracket.



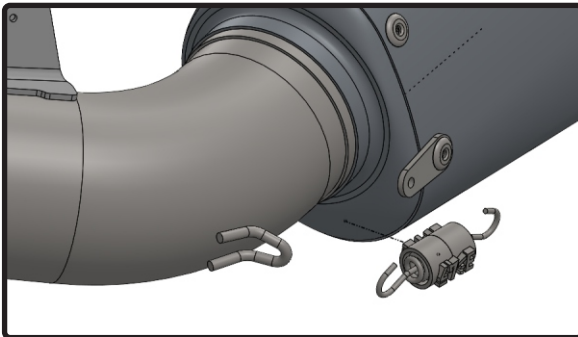
5. Using the stock hardware from the stock exhaust bracket, place the *10X25X30SPCR*, aluminum chassis spacer where the stock exhaust bracket previously was and slide the stock bolt back in to hold it in place. Then take the *13992-MBKT-1*, muffler bracket and locate the two bolt holes with the stock bolt and nut on the bike as shown in the photo below. Secure using stock bolt and nut and tighten to factory specifications.



6. Install *13992AP520-RMA*, muffler onto *13992-401-1D*, Yoshimura header and secure to the backside of *13992-MBKT-1*, muffler bracket using *M8X30H*, 8mm hex bolt and *8MMNUT*, 8mm flange nut.

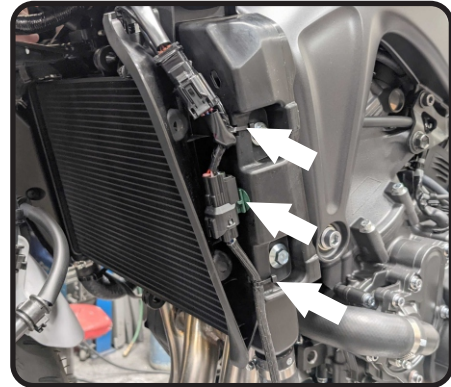


7. Install *RACE-SPX-2*, small spring onto the *13992AP520-RMA*, muffler and *13992-401-1D*, Yoshimura header using *ST-200*, spring puller.

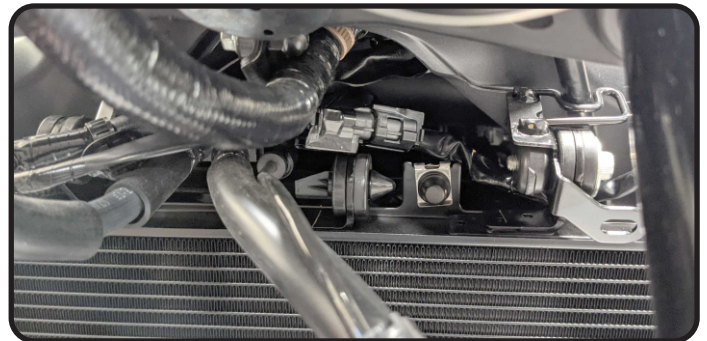


8. Torque muffler bracket bolts, oil pan bracket bolts, and header nuts to factory specification. Reinstall radiator bracket and torque stock bolt to factory specification.

9. Remove left radiator cover to expose the O2 sensor wire. Locate the mounting clip and two cable tie locations and remove the clip and cut the two cable ties to free the O2 sensor wire, as shown below.



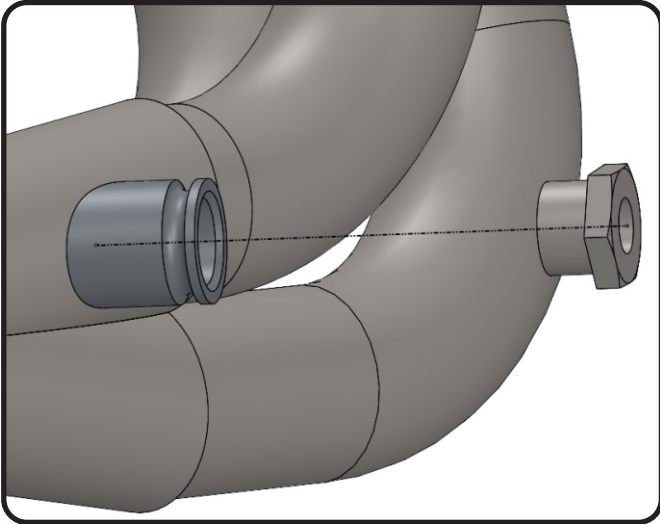
10. Route the O2 Sensor wire through the top of the radiator and behind the mounting brackets.



11. Remove the right radiator cover and route the O2 sensor wire down the wire channel and connect *B6450*, O2 sensor extension wire.



12. Install OXYBA12X125SS, O2 sensor adaptor onto the 13992-401-1D, Yoshimura header. Then install stock O2 sensor and tighten to factory specification.



13. Reinstall left and right radiator covers using opposite steps of removal.
14. Before starting vehicle, check for proper clearance between new exhaust system and rear suspension (i.e. tire, swingarm, brakes, rear shock, and etc.) If any problem is found, please carefully follow through the installation steps again. If problem still persists, please call Yoshimura Tech Department at (800) 634-9166 / in CA (909) 628-4722.
15. It is recommended that the muffler and tailpipe be wiped down with rubbing alcohol to remove oil and fingerprints. This will help prevent tarnishing of the finish after the exhaust is heated up.

**Note:** After starting vehicle, it is normal for new exhaust system and muffler to emit smoke until oil residue burns off.

## **Works Finish Care & Maintenance**

Before starting vehicle, clean pipe thoroughly using a soft cloth and rubbing alcohol to remove any oil and finger prints.

The color of the exhaust will change once the system has gone through a heat cycle of 15 minutes or more. Color will vary depending on lean/rich conditions.

Clean using a soft cloth and soap. Do not use abrasive materials as it will scratch the surface.

Surface reconditioning services are available to remove scratches and undesirable discoloration due to extreme heat. Contact Yoshimura Tech Department at (800) 634-9166 / in CA (909) 628-4722 for more information.