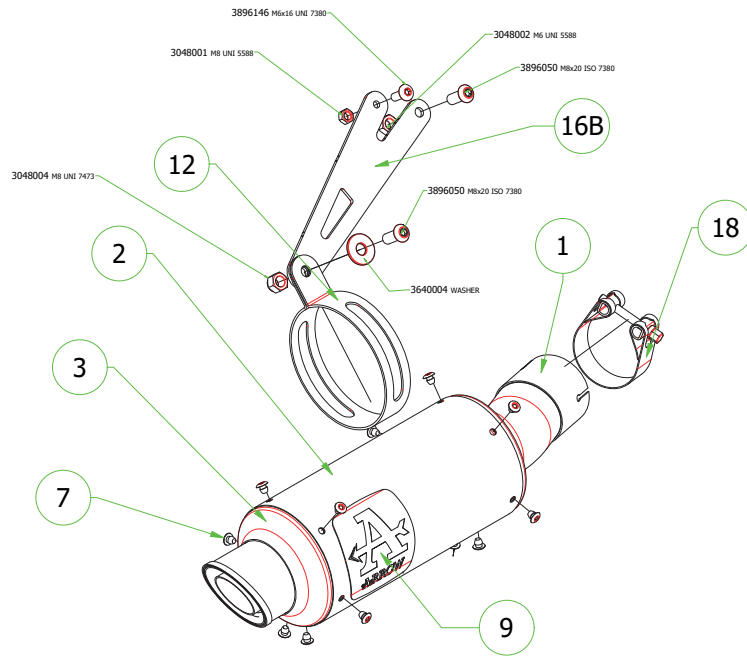


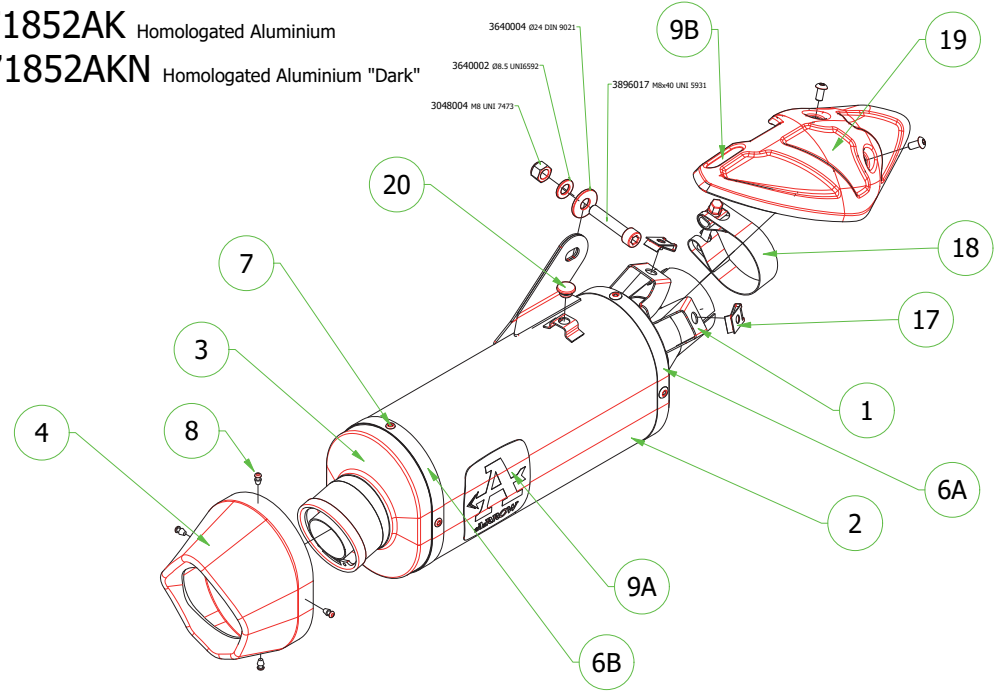
YAMAHA MT-10 '16/20



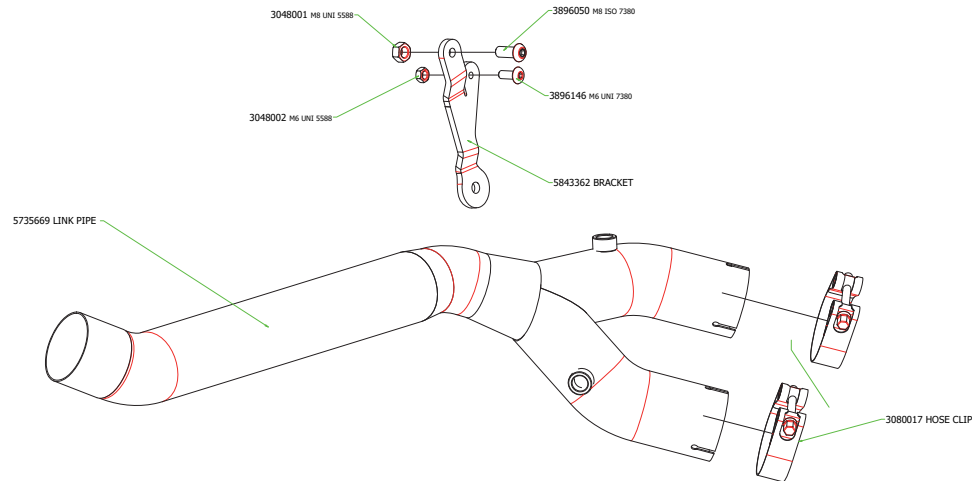
71530GP Homologated Full Titanium
71530GPI Homologated Inox "Dark"



71852PK Homologated Titanium
71852AK Homologated Aluminium
71852AKN Homologated Aluminium "Dark"



71656MI Non Catalytic Central Link Pipe



PARTI DI RICAMBIO / SPARE PARTS

ID	DESCRIZIONE / DESCRIPTION	71203PR cod	71530GP cod	71530GPI cod	71852AK cod	71852AKN cod	71852PK cod
1	Assieme anteriore / <i>Front assembly</i>		5035322	5035322	5035323	5035323	5035323
2	Corpo Marmitta / <i>Silencer Sleeve</i>	5260995	5261290	5265064	5257393	5257394	5260864
3	Assieme Posteriore / <i>Rear assembly</i>	5009963	5009701	5009948	5009972	5009972	5009972
4	Fondello in carbonio / <i>Carbon fibre end cap</i>				5704134	5704134	5704139
5	Materiale fonoassorbente / <i>Sound-absorbant material</i>	19007UN	5690106	5690106	5690148	5690148	5690148
6A	Fascetta di Serraggio Anteriore / <i>Front Strap For Rivets</i>				5495110	5495110	5495084
6B	Fascetta di Serraggio Posteriore / <i>Rear Strap For Rivets</i>				5495374	5495374	5495373
7	Rivetto inox mm 4.8 / <i>Stainless Steel 4.8 mm Rivet</i>		3608011	3608011	3608011	3608011	3608011
8	Rivetto inox mm 3.2 / <i>Stainless Steel 3.2 mm Rivet</i>				3608021	3608021	3608021
9A	Targhetta Arrow / <i>Arrow Plate</i>		3885026		3885026	3885026	3885026
9B	Targhetta Arrow / <i>Arrow Plate</i>				3883668	3883668	3883668
10	Silenziatore Interno / <i>Db Killer</i>						
11	Seeger / <i>Retain Clip</i>						
12	Fascetta di Sostegno / <i>Silencer Clamp</i>		5490069	5490069			
16A	Staffa sostegno / <i>Bracket</i>	5843352					
16B	Staffa sostegno / <i>Bracket</i>		5843363	5843363			
17	Inserito Rapid Nut / <i>Caged nut insert</i>				3245012	3245012	3245012
18	Fascetta Stringitubo / <i>Hose clip</i>		3080017	3080017	3080017	3080017	3080017
19	Protezione / <i>Heat Shield</i>				5704163	5704163	5704163
20	Gommino / <i>Rubber</i>				3240057	3240057	3240057
22	Tappo Sonda Lambda / <i>Lambda Sensor Plug Bolt</i>						