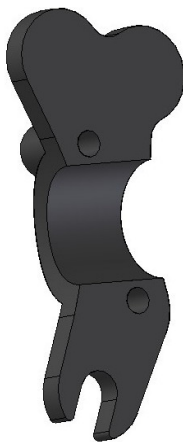


CODE: PLSR 19



1: MODE
2: LIGHT
3: PIT

TO COMBINE WITH BRSX



MECHANICAL CHARACTERISTICS

- **Panel switch manufactured in anodized aluminum**
- **Higher resistance and reduced weight**
- **IP69K protection degree**
- **Laser silkscreen**
- **Wired with Raychem 105° cable and sealed with RAYCHEM S1125resin**

1 - The manufacturer, importer or dealer shall not be liable for any incidental damage including personal injury or any other

damage caused by improper installation or operation of the JETPRIME product.

2 - JETPRIME makes no representation or warranties with regard to damage caused by the improper installation, use and

maintenance of his product . The warranty is limited to defects recognized by our technical department and

to normal use. The guarantee is void in case of accident,modification, improper or race use.

3 - Do not attempt to install the product JETPRIME on a motorcycle for which it was not made or tested by JETPRIME.

4 -The technical specifications of JETPRIME products and related products ar subject to change without any notice.