

KAWASAKI Z900RS / Z900RS CAFE STREET SPORTS SLIP-ON BRAVIS

Be sure to read the instruction carefully before starting the work. It is necessary to follow the contents to install Yoshimura product.

Product information



- ! CAUTION** Before beginning installation, let motorcycle cool down.
- ! CAUTION** Be sure not to damage each part during installation.
- ! CAUTION** Torque specification must be followed. If neglected, it may cause bolt and nut to fall off and damage to Yoshimura product and motorcycle.
- ! CAUTION** Titanium Blue sleeve is colored by anodizing. Handle with care as the color may change. When cleaning silencer, use soft cloth with dish soap but do not use metal polish or chemical cleaner.

1. Product Information :

Description	Kawasaki Z900RS/Z900RS CAFE Street Sports Slip-On BRAVIS	Cyclone Type	K269SCI11
Part Number	Stainless Sleeve (SS) : 180-269-5450	Main Material	Stainless steel
	Titanium Sleeve (ST) : 180-269-5480	Weight [STD : 2.2kg]	(SS) : 2.2kg
	Titanium Blue Sleeve (STB) : 180-269-5480B		(ST) & (STB) : 2.0kg
	Carbon Sleeve (SC) : 180-269-5490		(SC) : 1.9kg

2. Applicable Model :

Model	Kawasaki Z900RS/Z900RS CAFE
-------	-----------------------------

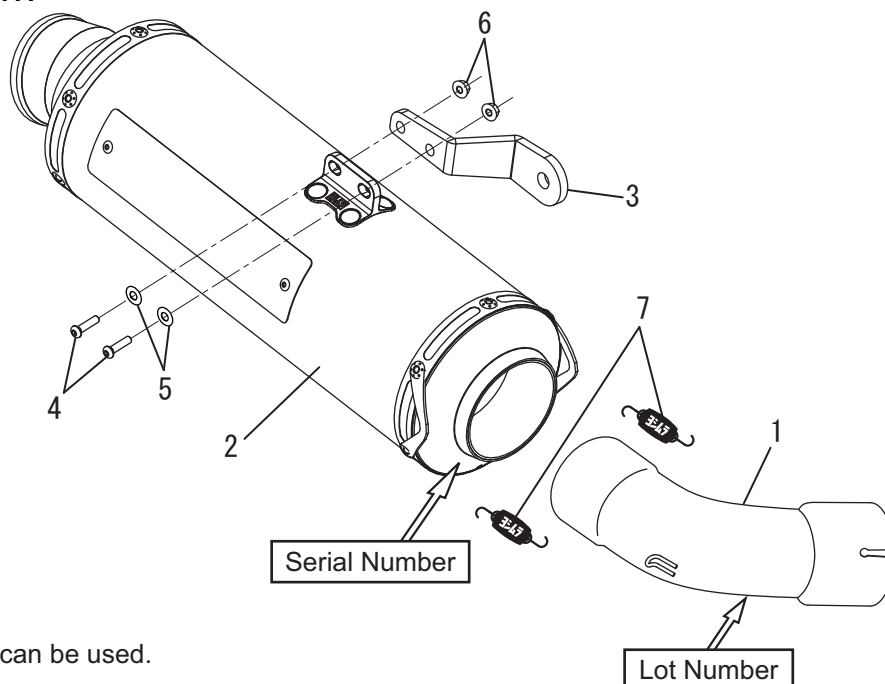
3. Optional Part :

Description	Part No.
Optional Heat Guard	194-269-0010

4. Contents:

No.	Descriptions	Part No.	Q'ty	No.	Descriptions	Part No.	Q'ty
1	Tailpipe	115-269-5400	1	3	Silencer Bracket	161-269-0220	1
2	Silencer Assy Stainless Sleeve	186-269-5450	1	4	Button Bolt M6x20	803-206-4020	2
	Silencer Assy Titanium Sleeve	186-269-5480		5	Washer M6x13	812-206-1310	2
	Silencer Assy Titanium Blue Sleeve	186-269-5480B		6	Flange Nut M6	823-006-1000	2
	Silencer Assy Carbon Sleeve	186-269-5490		7	Exhaust Spring	118-001-0000	2

Parts Diagram



REFERENCE

Optional main stand can be used.