



YOSHIMURA

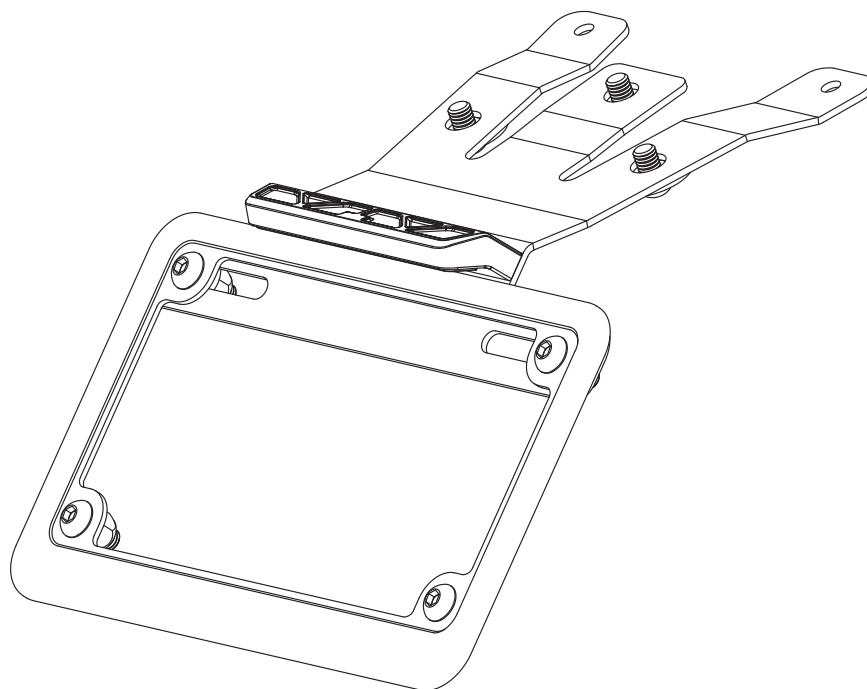
RESEARCH&DEVELOPMENT OF AMERICA, INC.

5420 DANIELS STREET STE A, CHINO CA., 91710 · (800) 634-9166 · (909) 628-4722 · FAX (909) 591-2198

www.yoshimura-rd.com

FENDER ELIMINATOR KIT

070BG121300
Honda Monkey

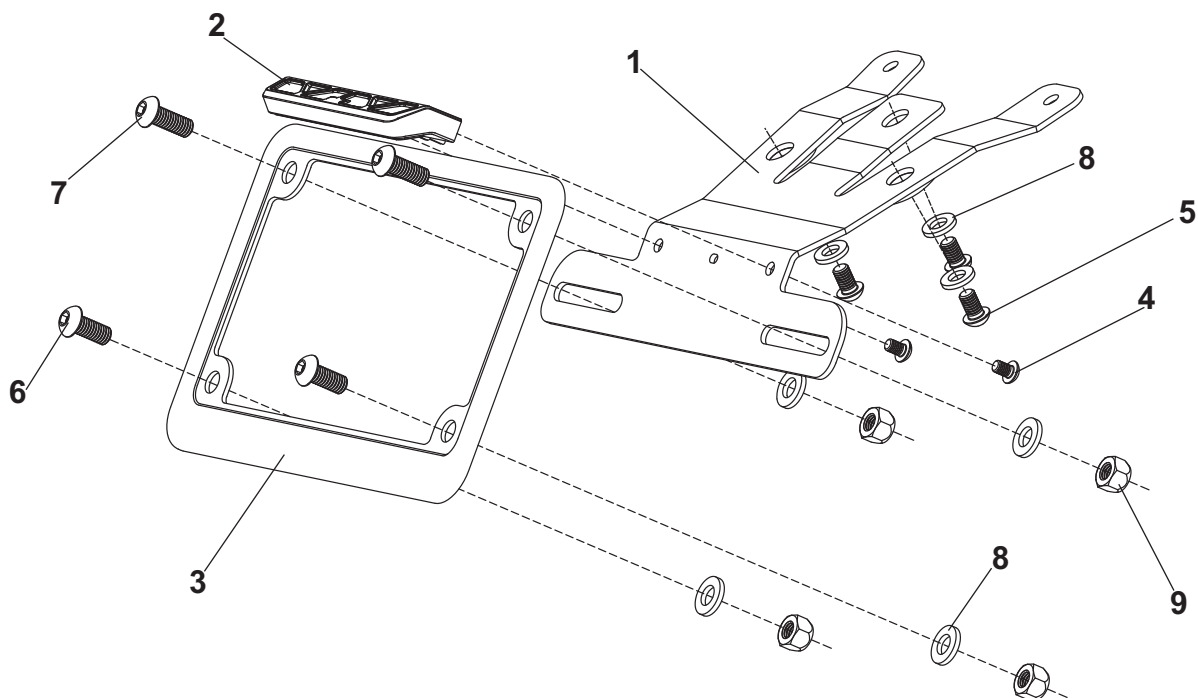


THIS PRODUCT IS NOT DOT APPROVED.

Yoshimura R&D of America, Inc. is not liable or responsible for any resulting event caused by the installation of this product. Check with local laws and regulations for compliance prior to installation and use. This product is not intended for use on public highways.



Assembly Diagram



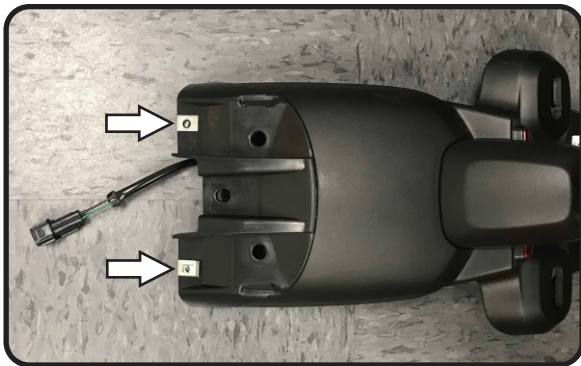
No.	Item	Description	Qty.
1	12130-FEBKT	Fender Eliminator Bracket	1
2	070BG-LH-K1	Fender Eliminator Light	1
3	070BG-LPF	Yoshimura License Plate Frame	1
4	M4X6BHS	4mm x 6mm Button Head	1
5	M6X10BHS	6mm x 10mm Button Head Screw	3
6	M6X14BHS	6mm x 14mm Button Head Screw	2
7	M6X16BHS	6mm x 16mm Button Head Screw	2
8	6MMWASHER	6mm Washer	7
9	6MMLN	6mm Nylon Lock Nut	4
**	BN-SSS-22-18	Solder Shrink Connectors	2
**	17100	Yoshimura Sticker Sheet	1

** Not shown on diagram.

Removal

1. Remove lower rear fender cover by removing the two tapping screws and two push rivets.
2. Locate and disconnect license plate light connector.
3. While securely supporting the stock fender assembly, remove the three bolts securing the fender assembly to upper fender and carefully remove.

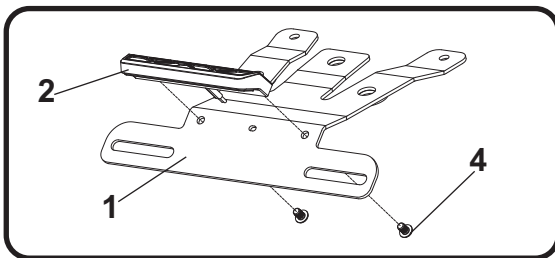
Note: The two stock spring clip nuts will be re-used with the Yoshimura fender eliminator kit. Remove from fender assembly and set aside for later use.



4. Remove the two tapping screws securing metal fender support bracket to the fender assembly to access license plate light wire.
5. Cut the stock license plate light connector from the stock fender assembly. Be sure to cut at least a 6" section of wire from the connector.

Installation

1. Install (No. 2) *070BG-LH-K1*, fender eliminator light onto (No. 1) *12130-FEBKT*, fender eliminator bracket using (No. 4) *M4X6BHS*, 4mm screws.



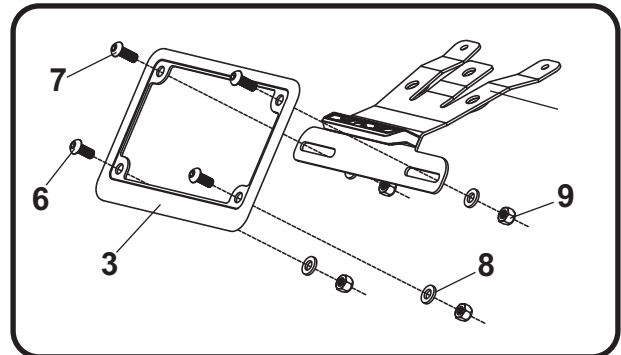
2. Using the *BN-SSS-22-18*, solder shrink connectors provided in the kit, connect the Yoshimura license plate light wires to the stock license plate light wires as follows:
Black Wire -to- Red (Positive)
Green Wire -to- Black (Ground)

- a) Strip the stock fender light wire ends 1/4" - 1/2" and insert into *BN-SSS-22-18*, solder connectors provided in the kit.
- b) Center the spliced wire ends in the middle and using a heatgun or lighter, apply heat evenly on the outer edges of the butt connector to shrink and hold wires in place.
- c) Making sure that the stripped ends are centered, heat the center of the butt connector evenly until the solder begins to liquify.
- d) Allow to cool completely and tug both ends of the wires to verify that connection is secured.

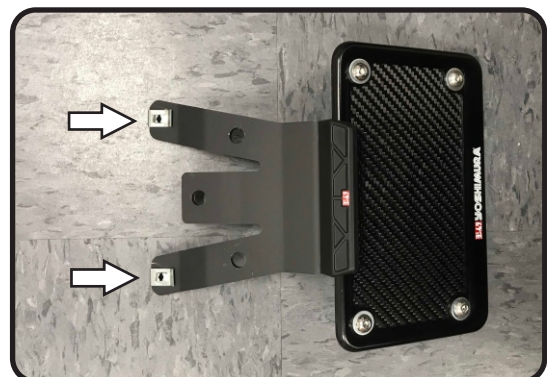
Scan for link to solder shrink connector instruction video.



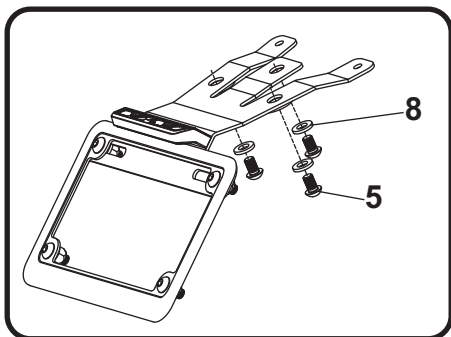
3. Install (No. 3) *070BG-LPF*, license plate frame onto (No. 1) *12130-FEBKT*, fender eliminator bracket using (No. 6,7) *M6X14BHS* and *M6X16BHS*, 6mm screws and (No. 8,9) *6MMWASHER* and *6MMLN*, 6mm washers and 6mm lock nuts.



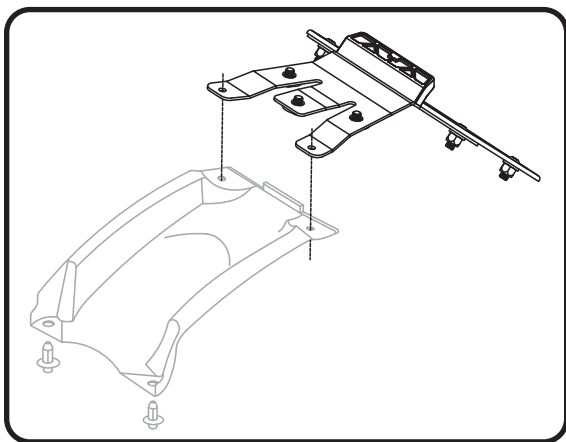
4. Install stock spring clip nuts onto (No. 1) *12130-FEBKT*, fender eliminator bracket.



5. Install (No. 1) 12130-FEBKT, fender eliminator bracket to upper fender using (No. 5,8) M6X10BHS, 6mm screws and 6MMWASHER, 6mm washers and re-connect license plate light connector.



6. Re-install the stock lower fender cover using the two tapping screws and push rivets.



7. Check for proper function of license plate light and turn signals and that all brackets and components are secure prior to riding.