



YOSHIMURA

RESEARCH&DEVELOPMENT OF AMERICA, INC.

5420 DANIELS STREET STE A, CHINO CA., 91710 · (800) 634-9166 · (909) 628-4722 · FAX (909) 591-2198

www.yoshimura-rd.com

RACE SERIES

Qualified Manufacturer Declared "Modified Part"

2009~2018

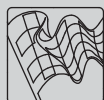
Honda CBR600RR

1228107220 (CF/CF)

1228107520 (SS/CF)

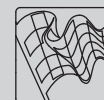
RS-5 Stainless Steel Full-System

FOR CLOSED COURSE COMPETITION ONLY; NOT INTENDED FOR STREET USE



Race Series systems are:

- NOT CARB/EPA tail-pipe emissions compliant.
- NOT street legal.
- For "Closed Course Competition" use only.



You must know how to remove and replace your stock exhaust in order to install this product otherwise have it installed by a professional mechanic. Keep all stock parts from your existing system as some components may be necessary to install your new Yoshimura exhaust depending on the application. Read through all instructions before beginning installation. Exhaust system can be extremely hot. Let motorcycle cool down before beginning installation. Always wear hand and eye protection and take precautionary measures to avoid injury.



NOTE: IN THE STATE OF CALIFORNIA, IT IS ILLEGAL TO MODIFY THE EMISSION CONTROL SYSTEM, WHICH INCLUDES THE CARBURETORS OF ANY VEHICLE.

Caution: Exhaust system can be extremely hot. Let motorcycle cool down before beginning installation.

Note: Read through all instructions before beginning installation.

Tools Needed:

Metric Socket Set, Extension, and Ratchet
Metric Combination Wrench Set
Metric Allen Wrench Set
Torque Wrench
Sharp Scissors and Tape

Installation Steps:

1. Remove rider seat (two bolts under rear corner edges of rider seat) and passenger seat.
2. Remove rear seat cowling by removing the four bolts shown in Fig. 1 and pulling the cowling toward the rear of bike and up. Also, remove muffler heatshield bolt (as shown in Fig. 1) at this time.
3. Disconnect the three electrical connectors shown in Fig. 2 (brake light, running light, and rear turn signals).
4. Remove rear fender, brake light, and rear turn signals from motorcycle (see Fig. 3 and Fig. 4).
5. Remove right side rider foot controls (see Fig. 5 for bolt locations).
6. Remove right side passenger foot rest (see Fig. 6 for bolt locations).
7. Remove stock metal tailpipe heatshield by removing the bolt shown in Fig. 7.
8. Remove stock muffler mounting bolts (see Fig. 8 and Fig. 9).
9. Loosen exhaust clamp shown in Fig. 10 and remove stock tailpipe, muffler, and muffler heatshield.
10. Remove bolt in subframe shown in Fig. 11. This will be the new muffler mounting location for the Yoshimura muffler. The stock muffler mounting points on each side of the subframe will not be used.
11. Cut out the supplied heatshield template.
12. Tape or firmly hold template to adhesive side (not foil side) of heatshield.
13. Trace outline of template on heatshield.
14. Use scissors to cut heatshield to outline. When cutting, keep excess in one piece - the extra piece will be used later.
15. Use rubbing alcohol to clean area where heatshield will be applied.
16. Remove adhesive backing and apply to underside of rear fender assembly (see Fig. 12 for BEFORE and AFTER pictures of adhesive foil heatshield installation).

NOTE: Take a moment to examine how the heatshield lines up with the features of the undertail plastic before you begin.

17. After the heatshield is installed use the scraps to patch or cover any open areas.
18. Remove the front left and right fairings.
19. Remove lower radiator bracket and swing radiator forward to ease removal of stock header.
20. Disconnect exhaust valve cables from servo motor and remove stock header and exhaust port gaskets. (Replace with new exhaust port gaskets) **IMPORTANT: Do not disconnect servo motor!**

NOTE¹: Keep all header mounting hardware. The stock header mounting hardware will be used to mount the Yoshimura header.

NOTE²: For 2013 model, remove O2 sensor from stock header and re-install into Yoshimura midpipe.
21. Install Yoshimura manifolds and flanges using the stock header nuts (see Fig. 13 for correct flange orientation and spring locations). Leave bolts loose to ease header installation.
22. Transfer all mounting hardware from stock header to Yoshimura header (see Parts Diagram on last page).
23. Install Yoshimura header from one end of the engine to the other by slipping one tube at a time onto manifolds.
24. Connect header to flanges using the supplied springs.
25. Bolt header to chassis mount using stock hardware.
26. Slide supplied collector clamp over the inlet of the Yoshimura tailpipe and slide tailpipe onto Yoshimura header outlet.
27. Install supplied muffler clamp heat insulator to inside of muffler clamp. Slide muffler clamp onto Yoshimura muffler and slide Yoshimura muffler onto Yoshimura tailpipe. Line up muffler clamp ears with new muffler mount location (shown in Fig. 11). Bolt the right side of the clamp to the subframe with the supplied bolt. Slide left side of muffler clamp over the protruding bolt and install the supplied nut.
28. Install exhaust springs between the muffler and the tailpipe.
29. Torque stock header nuts to 1.0 kg-m (7.3 lb-ft). Torque header chassis mount bolt to 2.3 kg-m(16.5 lb-ft).
30. Check alignment of exhaust, then torque supplied collector clamp to 1.25 kg-m (9 lb-ft).
31. Torque muffler clamp bolt and nut to 2.5 kg-m (18 lb-ft).
32. It is recommended that the muffler and tailpipe be wiped down with rubbing alcohol to remove oil and fingerprints. This will help prevent tarnishing of the finish after the exhaust is heated up.
33. Install rubber grommets into the stock plastic muffler heatshields (see Fig. 14, Fig. 15, and Parts Diagram on the last page).
34. Re-install tailpipe heat shield, rear fender, seat cowling, foot peg, and seat in reverse order of disassembly. Check for proper operation of tail light, brake light, and turn signals before completion.
35. Check for proper clearance between new exhaust system and motorcycle. (i.e. Swing-arm, body work, etc.) If any problem is found, please carefully follow through the installation steps again. If problem still persists, please call Yoshimura tech department at (800)634-9166 / in CA (909)628-4722.

Note: After starting motorcycle, it is normal for new exhaust system and muffler to smoke until oil residue burns off.



Fig. 1



Fig. 2



Fig. 3



Fig. 4



Fig. 5



Fig. 6



Fig. 7



Fig. 8



Fig. 9

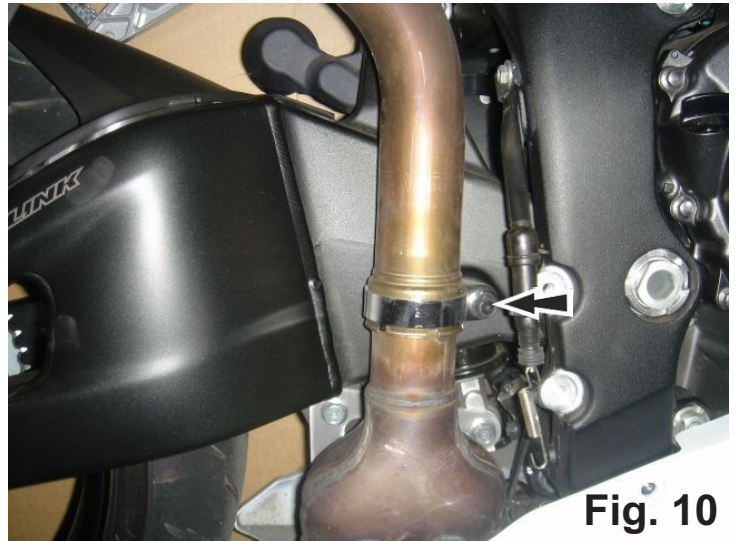


Fig. 10

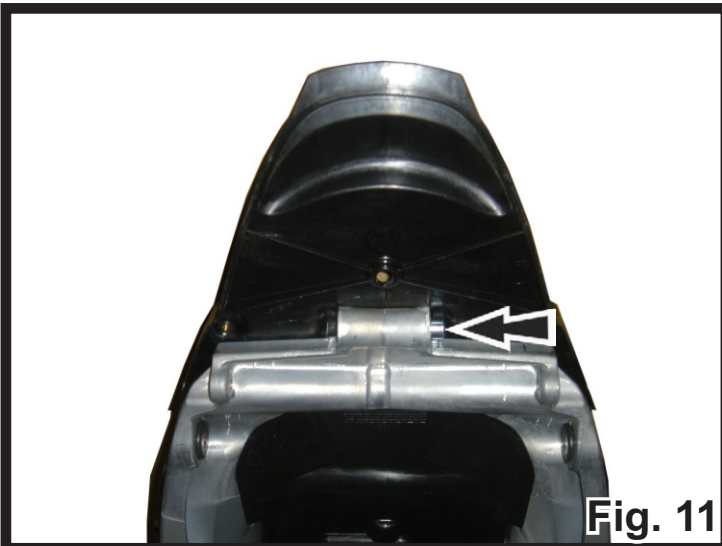


Fig. 11

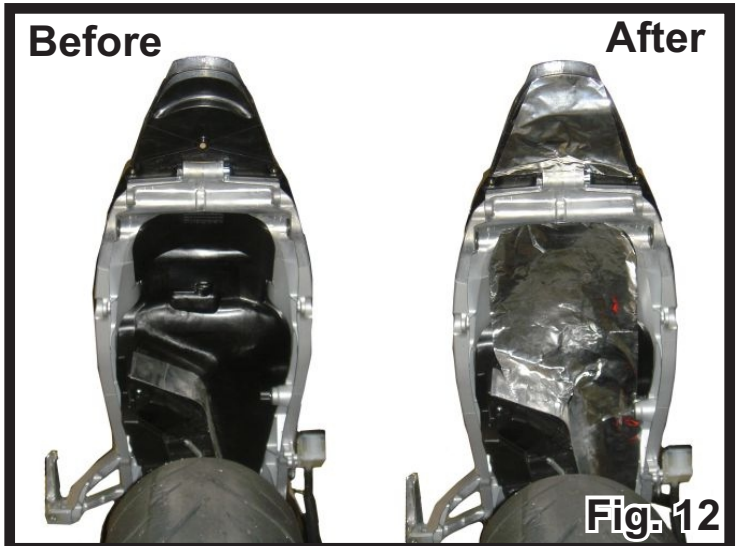
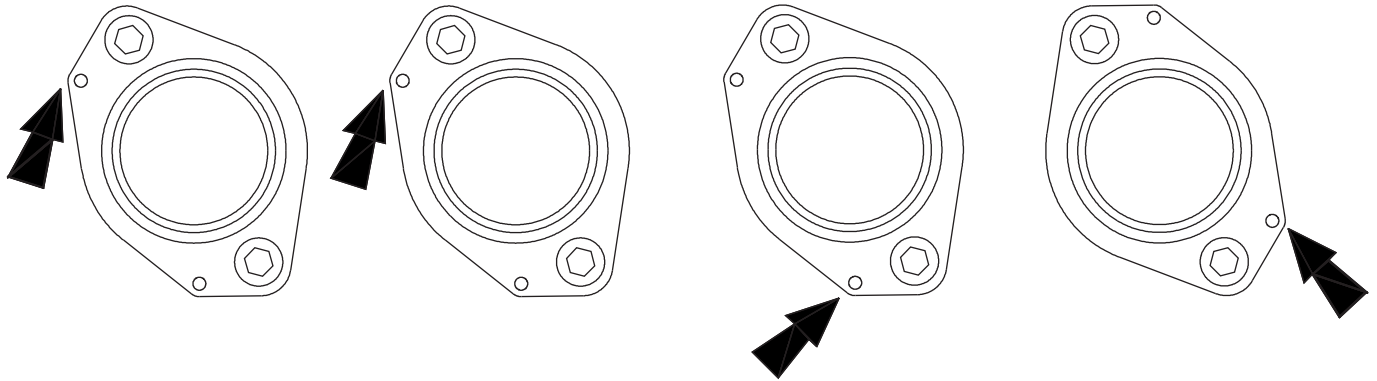


Fig. 12

Looking at Front of Engine

Exhaust Flange Orientation



Arrows Show Spring Locations

Fig. 13



Fig. 14

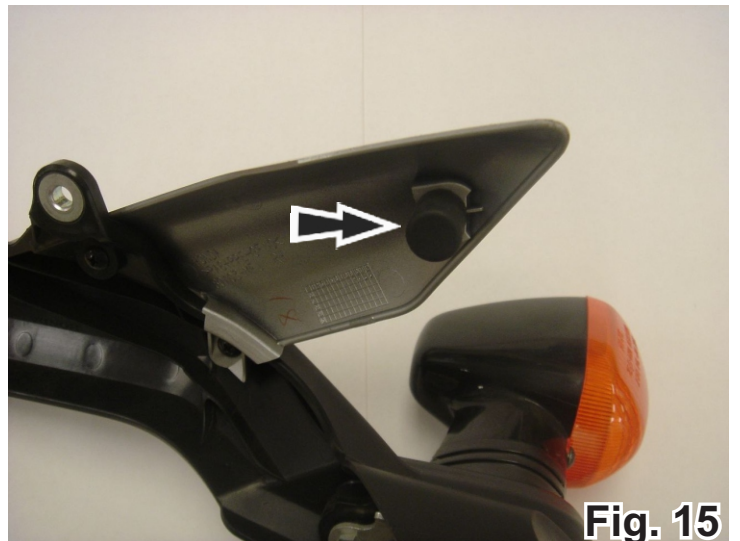
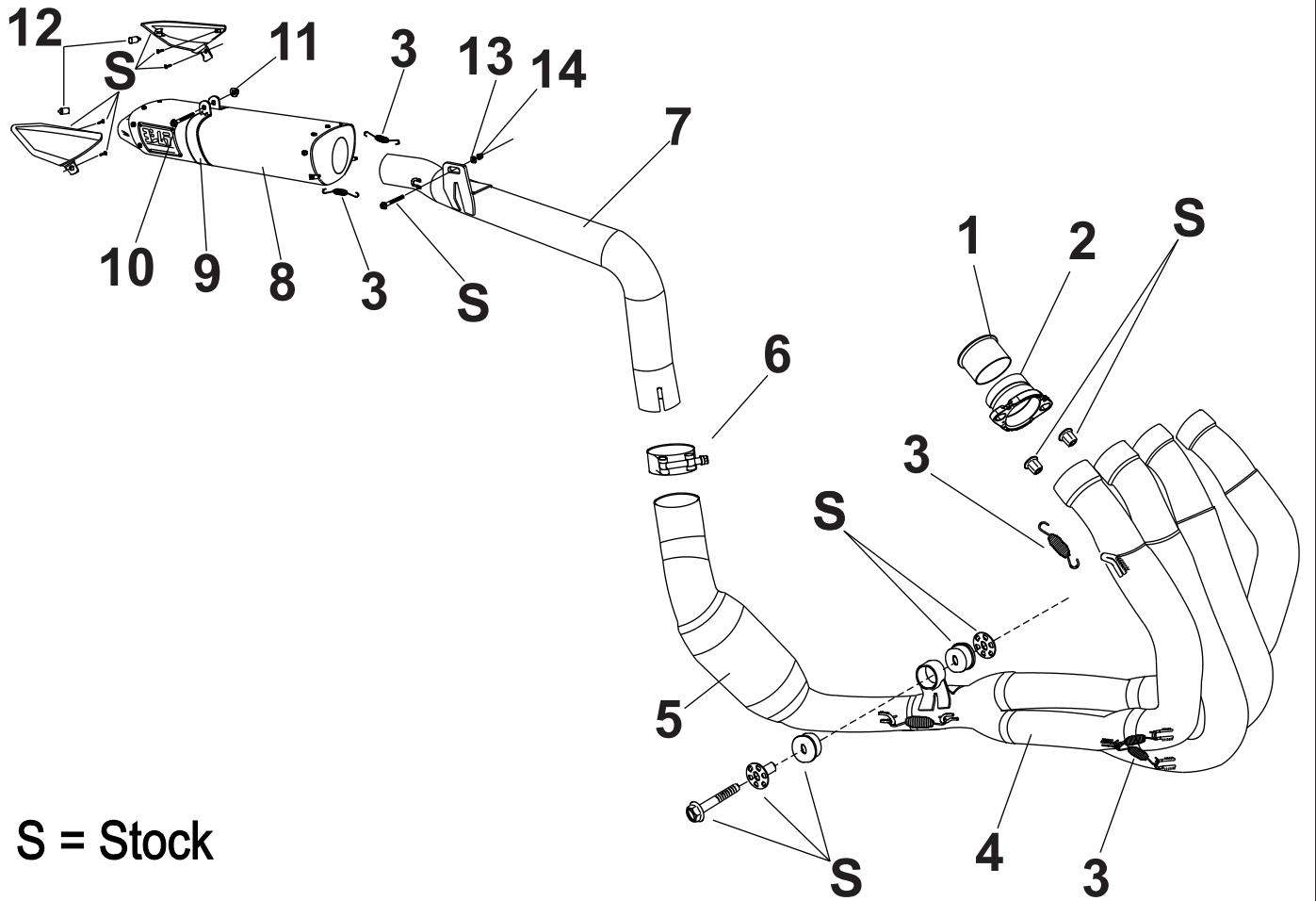


Fig. 15

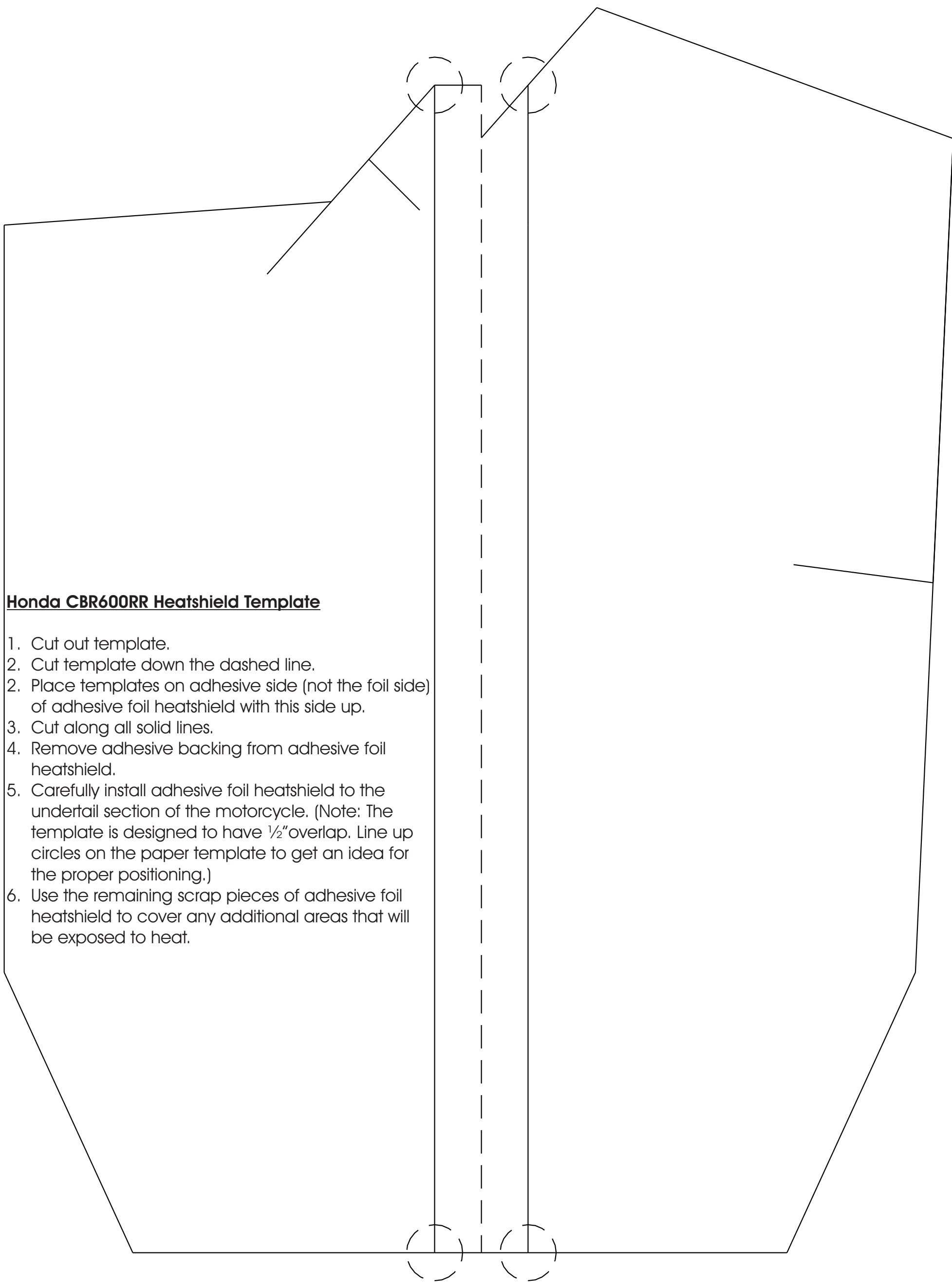
#1228107(220,520)



Parts Diagram

S = Stock

NO.	DESCRIPTION	QTY	PART #
1	Yoshimura Exhaust Manifold	4	1228SMT
2	Yoshimura Exhaust Flange	4	1228SDY
3	Medium Exhaust Spring	8	RACE-SPS-1
4	Yoshimura Header	1	1228-404
5	Yoshimura Midpipe	1	12281-CMA
6	Stainless Steel Collector Clamp	1	27-62MSH
7	Yoshimura Stainless Steel tailpipe	1	1228-435
8	RS-5 Muffler Assembly with Carbon Fiber Sleeve with Stainless Steel Sleeve	1	CRRS5126CR SRRS5126C
9	Stainless Steel Muffler Clamp Stainless Steel Sleeve use Carbon Fiber Sleeve use	1	1227-MPCX 1227-MPC
10	8mm x 65mm Bolt (Fully Threaded)	1	M8X65H-F
11	8mm Nut	1	8MMNUT
12	Rubber Bumpers	2	4284-034
13	6mm Washer	1	6MMWASHER
14	6mm Lock Nut	1	6MMLN
**	O2 Bung Plug	1	M18X13PLG
**	Adhesive Back Foil Heatshield (8" X 16")	2	1200-00-01
**	Muffer Clamp Heat Insulator	1	HT SHLDTRS
**	Foil Heatshield Template	1	**
**	Low Volume Insert	1	INS-09-K
**	Yoshimura Spring Puller Tool	1	ST-200
**	Yoshimura Vinyl Sticker	1	17029



Honda CBR600RR Heatshield Template

1. Cut out template.
2. Cut template down the dashed line.
2. Place templates on adhesive side (not the foil side) of adhesive foil heatshield with this side up.
3. Cut along all solid lines.
4. Remove adhesive backing from adhesive foil heatshield.
5. Carefully install adhesive foil heatshield to the undertail section of the motorcycle. (Note: The template is designed to have 1/2" overlap. Line up circles on the paper template to get an idea for the proper positioning.)
6. Use the remaining scrap pieces of adhesive foil heatshield to cover any additional areas that will be exposed to heat.

