



# YOSHIMURA

RESEARCH&DEVELOPMENT OF AMERICA, INC.

5420 DANIELS STREET STE A, CHINO CA., 91710 · (800) 634-9166 · (909) 628-4722 · FAX (909) 591-2198

**[www.yoshimura-rd.com](http://www.yoshimura-rd.com)**

## **RACE SERIES**

**Qualified Manufacturer Declared "Modified Part"**

**2014~2016**

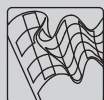
**Honda CBR650F**

**126500J220 (CF/CF)**

**126500J520 (SS/CF)**

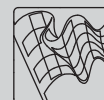
**R-77 Stainless Steel Full-System**

**FOR CLOSED COURSE COMPETITION ONLY; NOT INTENDED FOR STREET USE**



Race Series systems are:

- NOT CARB/EPA tail-pipe emissions compliant.
- NOT street legal.
- For "Closed Course Competition" use only.

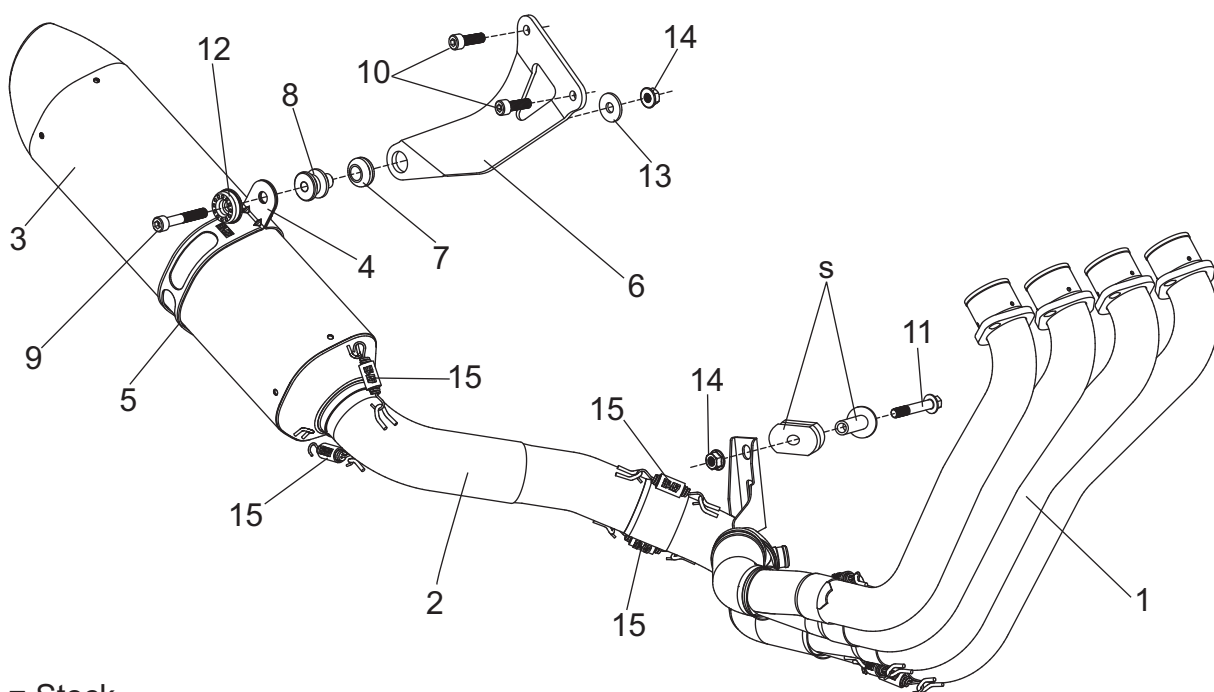


*You must know how to remove and replace your stock exhaust in order to install this product otherwise have it installed by a professional mechanic. Keep all stock parts from your existing system as some components may be necessary to install your new Yoshimura exhaust depending on the application. Read through all instructions before beginning installation. Exhaust system can be extremely hot. Let motorcycle cool down before beginning installation. Always wear hand and eye protection and take precautionary measures to avoid injury.*



NOTE: IN THE STATE OF CALIFORNIA, IT IS ILLEGAL TO MODIFY THE EMISSION CONTROL SYSTEM, WHICH INCLUDES THE CARBURETORS OF ANY VEHICLE.

## Assembly Diagram



S = Stock

No.	Item	Description	Qty.
1	12650-401	Yoshimura Header	1
2	12650-419	Yoshimura Tailpipe	1
3	CRR77M14S SRR77M14S	Carbon Fiber Muffler Stainless Steel Muffler	1
4	YM7M-MPCA(X)	Muffler Clamp	1
5	HT SHLDR77	Muffler Clamp Heatshield	1
6	12650AB-B	Aluminum Muffler Bracket	1
7	Z1022	Rubber Bushing	1
8	ALS-031	Aluminum Spacer	1
9	M8X50	8mm x 50mm Socket Head Cap Bolt	1
10	M8X25	8mm x 25mm Socket Head Cap Bolt	2
11	M8X45H	8mm x 45mm Flanged Hex Head Bolt	1
12	M8ALCSW-00	8mm Countersink Washer	1
13	8MMWASHERL	8mm Large Washer	1
14	8MMNUT	8mm Flange Nut	2
15	RACE-SPS-1	Medium Exhaust Spring	4
**	INS-04-K	Low Volume Insert	1
**	1200-00-01	Adhesive Heatshield	2
**	ST-200	Spring Puller Tool	1
**	17029	Sticker Kit Sheet	1

(X) Used for stainless steel muffler canister.

\*\* Not shown in diagram.

## Removal

1. Remove right lower cowl as per Factory Service / Owners Manual.
2. Remove lower radiator support bracket.
3. Remove the O2 sensor from the stock header.
4. Remove the left and right bolts securing the muffler body to the frame.
5. While securely supporting the stock exhaust system, remove the header nuts and carefully remove the stock exhaust system.

Note: The stock exhaust port gaskets will be re-used with the Yoshimura full-system. Inspect and replace gasket if necessary.

6. Remove the stock left side muffler mount spacer from left muffler mount and replace with the stock right side muffler mount spacer.

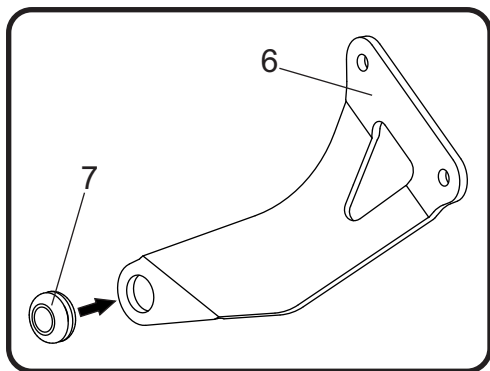
Note<sup>1</sup>: The stock right side muffler mount spacer is shorter than the left side muffler mount spacer.

Note<sup>2</sup>: Remove the stock right side muffler mount bushing from frame as it will not be used.

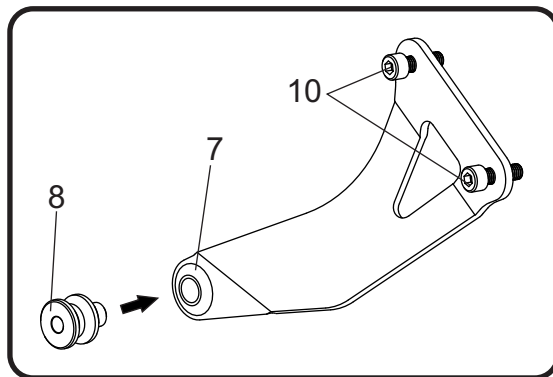
7. Remove right side passenger footpeg.

## Installation

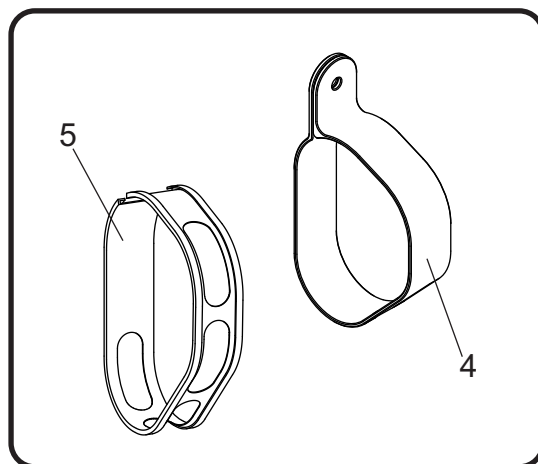
1. Install (No. 7) Z1022, rubber bushing into (No. 6) 12650AB-B, aluminum muffler bracket.



2. Install (No. 8) ALS-031, aluminum spacer into (No. 7) Z1022, rubber bushing as shown.



3. Install (No. 6) 12650AB-B, aluminum muffler bracket behind the stock passenger footpeg. Secure both the passenger footpeg and muffler bracket to the frame using (No. 10) M8X25, bolt. Do not torque at this time.
4. Install (No. 5) HT SHLDR77, muffler clamp heatshield onto (No. 4) YM7M-MPCA(X), muffler clamp.

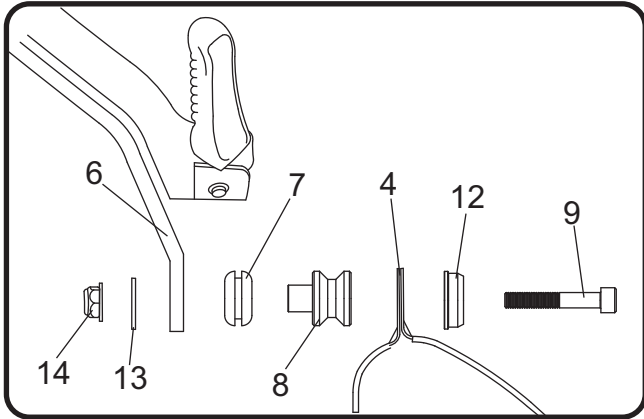


5. Install (No. 1) 12650-401, Yoshimura header using the stock header nuts. Do not torque at this time.

Note: It may be necessary to separate the header legs from the collector and install the header legs individually. Re-install collector onto header legs.

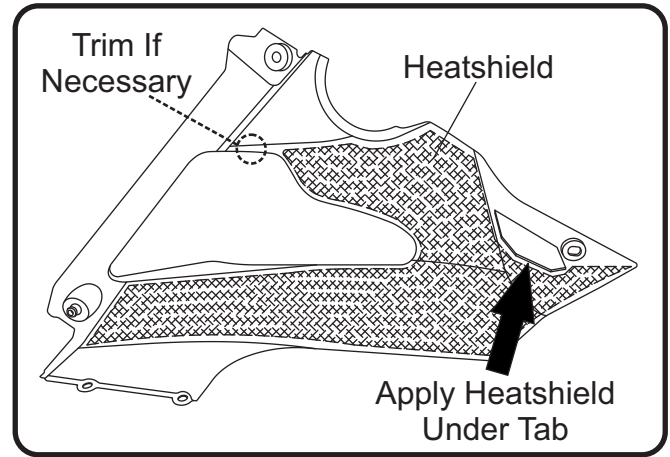
6. Secure header bracket to left side muffler mount using (No. 11) M8X45H, flange bolt and (No. 14) 8MMNUT, nut. See assembly diagram for proper orientation. Do not torque at this time.
7. Install (No. 2) 12650-419, Yoshimura tailpipe inlet over (No. 1) 12650-401, header outlet.

8. Slide (No. 4) *YM7M-MPCA(X)*, muffler clamp over (No. 3) Yoshimura muffler assembly and align to (No. 6) *12350AB-B*, aluminum muffler bracket. Secure using (No. 9) *M8X50*, bolt, (No. 12) *M8ALCSW-00*, countersink washer, (No. 13) *8MMWASHERL*, large washer, and (No. 14) *8MMNUT*, flange nut. See diagram for proper orientation. Do not torque at this time.



9. Torque (No. 10) *M8X25*, bolts to factory specification.
10. Torque (No. 9) *M8X50*, bolt to 24 Nm (2.4 kg-m, 18 ft-lb).
11. Torque (No. 11) *M8X45H*, flange bolt to factory specification.
12. Torque header nuts to factory specification.
13. Install (No. 15) *RACE-SPS-1*, medium exhaust springs between the tailpipe and header.
14. Re-install the lower radiator support bracket.
15. Re-install the stock O2 sensor into (No. 1) *12650-401*, Yoshimura header.
16. Apply provided *1200-00-01*, adhesive heatshield on the inside of the right side lower cowl as shown below.

Note: Adhesive heatshield must be applied under inner fairing tab shown by the arrow.



17. Re-install right side lower cowl using the reverse steps of removal.

Note: Due to tight clearances between the header and fairing, it may be necessary to trim the fairing using a file or dremmel tool.

18. Before starting vehicle, check for proper clearance between new exhaust system and rear suspension (i.e. tire, swingarm, brakes, rear shock, and etc.) If any problem is found, please carefully follow through the installation steps again. If problem still persists, please call Yoshimura Tech Department at (800) 634-9166 / in CA (909) 628-4722.
19. It is recommended that the muffler and tailpipe be wiped down with rubbing alcohol to remove oil and fingerprints. This will help prevent tarnishing of the finish after the exhaust is heated up.

Note: After starting vehicle, it is normal for new exhaust system and muffler to emit smoke until oil residue burns off.