




# RACE SERIES


**Qualified Manufacturer Declared "Modified Part"**


**APPLICATION**

<b>YEAR</b>	<b>MODEL</b>
2008-2018	WR250R
2008-2011	WR250X
<b>PRODUCT</b>	
133002D520	RS4 SS Slip-On Exhaust System with Stainless Steel Sleeve: Carbon Fiber Endcap

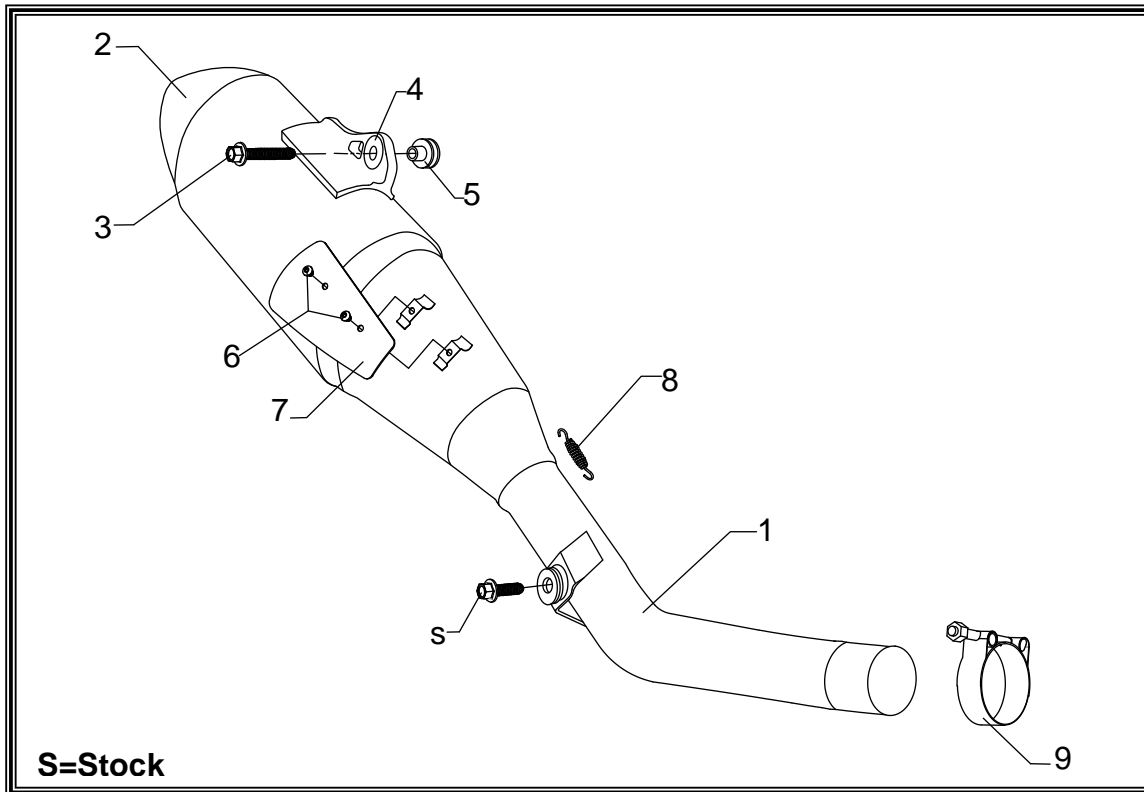
**FOR CLOSED COURSE COMPETITION ONLY; NOT INTENDED FOR STREET USE**

- 

*This product is designed for use in closed course racing and is not intended for highway use. In the state of California, it is illegal to modify the emission control system, which includes the fuel injection of any vehicle.*
- 

*You must know how to remove and replace your stock exhaust in order to install this product otherwise have it installed by a professional mechanic. Keep all stock parts from your existing system as some components may be necessary to install your new Yoshimura exhaust depending on the application.*
- 

*Read through all instructions before beginning installation. Exhaust system can be extremely hot. Let motorcycle cool down before beginning installation. Always wear hand and eye protection and take precautionary measures to avoid injury.*



No.	Part #	Description	Qty
1	13300-435	Yoshimura Tailpipe	1
2	133002D520-RMA	Yoshimura Muffer Assembly	1
3	M10X35H	10mm x 35mm Flanged Hex Bolt	1
4	Z1022	Rubber Grommet	1
5	ALS-034	Aluminum Spacer	1
6	RC116HSB	6mm x 8mm Button Head Screw	2
7	13300-HS	Yoshimura RS4 Heatshield	1
8	RACE-SPS-1	Medium Exhaust Spring	1
9	22055	Exhaust Clamp	1
**	347PLUG	Muffer Wash Plug	1
**	ST-200	Spring Puller Tool	1
**	17029	Yoshimura Sticker Sheet	1

**-TOOLS REQUIRED-**

*Metric Socket Set • Combination Wrench Set • Torque Wrench • Metric Allen Wrench Set*

**-REMOVAL-**

1. *Removing the number plate.*

- a) **Remove seat by removing the (2) bolts from below rear fender.**
- b) **Remove left and right side panel.**
- c) **Carefully pull off side panel from the airbox tabs.**

2. *Removing the muffler.*

- a) **Remove the exhaust valve cover by removing the (2) bolts securing cover to tailpipe.**
- b) **Disconnect exhaust valve cables from exhaust valve.**
- c) **Loosen the exhaust clamp on the header to tailpipe connection.**
- d) **Remove the chassis mount bolt securing the muffler assembly to subframe.**
- e) **While securely supporting the muffler, remove the muffler mount bolt.**
- f) **Carefully remove the muffler and tailpipe off the stock header.**
- g) **Remove exhaust valve cables from servo motor behind left side panel.**

**Note: Do not remove or unplug exhaust valve servo motor. Only the exhaust valve cables are to be removed.**

**-INSTALLATION-**

1. *Small parts installation.*

- a) **Install provided rubber grommet into muffler bracket.**
- b) **Install aluminum spacer into rubber grommet. See diagram for proper orientation.**
- c) **Slide provided exhaust clamp over Yoshimura tailpipe.**

2. *Installing the muffler tailpipe assembly.*

- a) **Carefully install Yoshimura muffler assembly by sliding onto stock header.**
- b) **Bolt the tailpipe to subframe mount using the stock bolt. Start threads by hand to prevent cross-threading. Do not tighten bolt at this time.**
- c) **Secure Yoshimura muffler assembly using the hardware provided in the kit. See diagram for proper orientation and order of hardware.**  
**Note: If necessary, remove exhaust spring to ease adjustment and alignment of muffler.**
- d) **Torque muffler mount bolt to factory specification.**
- e) **Torque chassis mount bolt to factory specification.**
- f) **Torque exhaust clamp to 10 lb-ft. (13.5 Nm)**

3. *Reinstall number plate.*

- a) **Re-install left and right side panels using the reverse steps of removal.**
- b) **Re-install seat and seat bolts.**

4. *Fitment check and Notes.*

- a) **Before starting motorcycle, check for proper clearance between new exhaust system and rear suspension (i.e. tire, swing-arm, brake, rear shock, engine, and etc.) If any problem is found, please carefully follow through the installation steps again. If problem still persists, please call Yoshimura Tech Department at (800) 634-9166 / in CA (909) 628-4722.**
- b) **It is recommended that the muffler and tailpipe be wiped down with rubbing alcohol to remove oil and fingerprints. This will help prevent tarnishing of the finish after the exhaust is heated up.**
- c) **NOTE: After starting motorcycle, it is normal for new exhaust system and muffler to emit smoke until oil residue burns off.**