



YOSHIMURA

RESEARCH & DEVELOPMENT OF AMERICA, INC.

5420 DANIELS STREET STE A, CHINO CA. 91710 · (800)634-9166 · (909)628-4722 · FACSIMILE (909)591-2198

www.yoshimura-rd.com

TRS TRI-OVAL PERFORMANCE EXHAUST SYSTEM

KAWASAKI
2007
Z1000

1411262	STAINLESS STEEL RACE SLIP-ON SYSTEM WITH CARBON FIBER SLEEVE
1411265	STAINLESS STEEL RACE SLIP-ON SYSTEM WITH STAINLESS STEEL SLEEVE
1411267	STAINLESS STEEL RACE SLIP-ON SYSTEM WITH TITANIUM SLEEVE



**THIS PRODUCT IS DESIGNED FOR USE IN CLOSED COURSE
RACING AND IS NOT INTENDED FOR HIGHWAY USE.**



NOTE: IN THE STATE OF CALIFORNIA, IT IS ILLEGAL TO MODIFY THE EMISSION CONTROL SYSTEM, WHICH INCLUDES THE FUEL INJECTION SYSTEM.

Caution: Exhaust system can be extremely hot. Let motorcycle cool down before beginning installation.

Note: Read through all instructions before beginning installation.

Tools Needed:

Metric Socket Set

Metric Combination Wrench Set

3/8" Ratchet and Extension

Torque Wrench

Installation Steps:

- 1 Remove stock mufflers and stock tailpipes.
- 2 Remove the stock collector clamps from the stock header outlets. Do not remove stock gaskets from stock header. Stock gaskets will be used between the stock header and the Yoshimura tailpipes.
- 3 Remove the bolts from the stock collector clamps.
- 4 Install the Yoshimura spring hook tabs onto the stock collector clamps (see Fig. 1).
- 5 Slide the stock collector clamps back onto the stock header outlets (see Fig. 2 and 3 for correct orientation of stock collector clamps).

NOTE: The stock collector clamps have slots in them. These slots go over a tab on the stock header outlets.

- 6 Remove exhaust valve cables, but do not disconnect the electronic servo motor that controls them.

NOTE: Refer to service manual for complete exhaust valve cable removal. Do not unplug the electronic servo motor that controls the exhaust valve cables.

- 7 Install supplied muffler clamp heat insulators into muffler clamps. Slide muffler clamps over Yoshimura mufflers.
- 8 Slide Yoshimura tailpipes and mufflers into the stock header.

NOTE: Ensure that Yoshimura tailpipes are completely seated into the stock header.

- 9 Mount muffler clamps to stock mounting position using the supplied bolts and stock nuts (see Fig 3).

NOTE: Extra large chrome stock washers will not be used between the Yoshimura muffler clamps and the stock muffler mount locations.

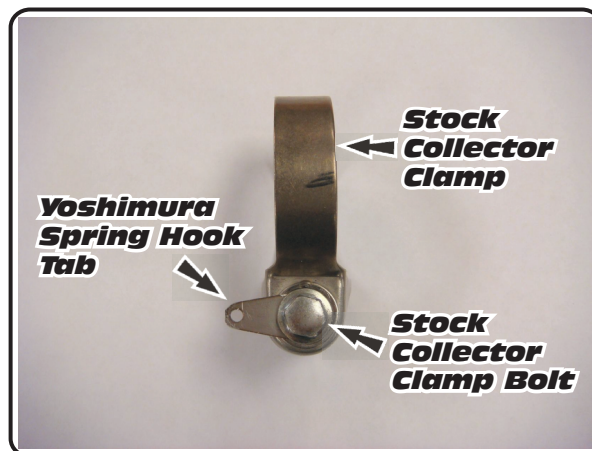


Fig. 1

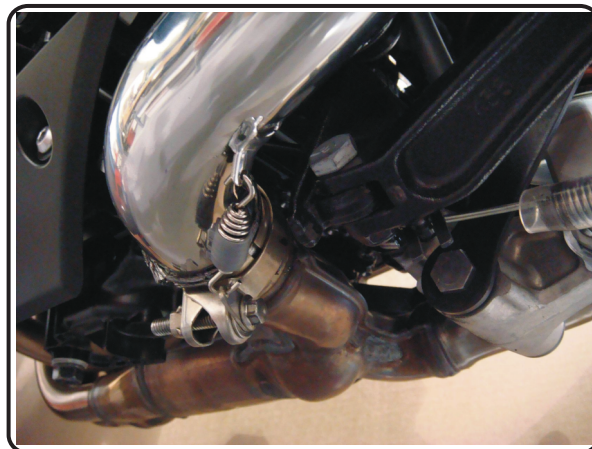


Fig. 2

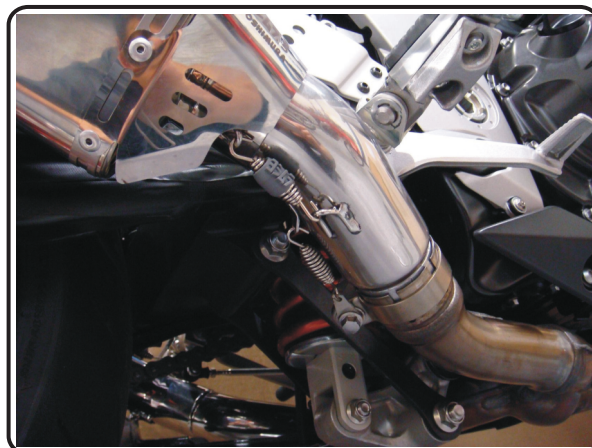
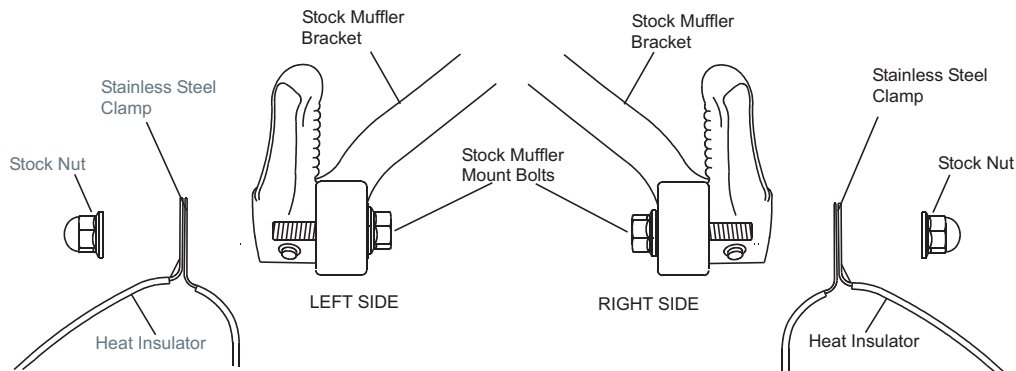
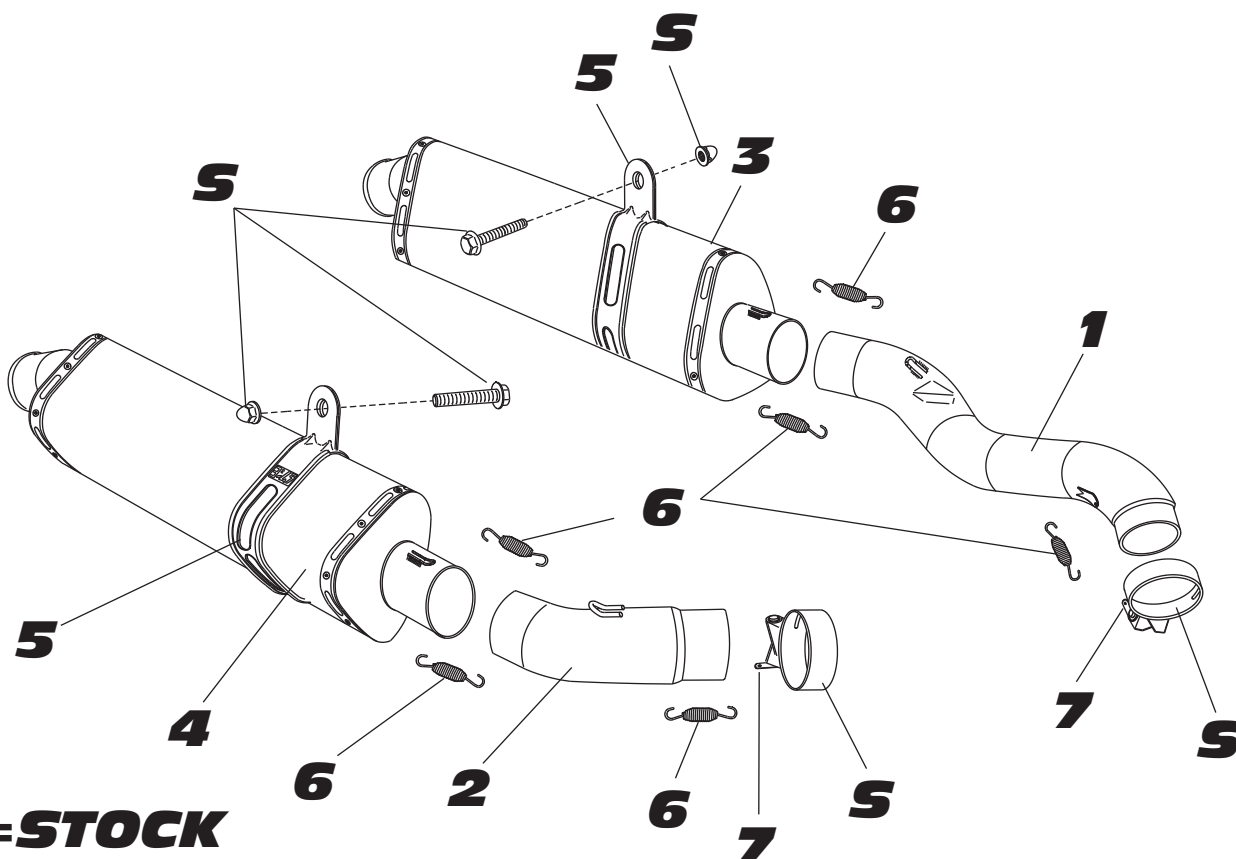


Fig. 3

**Fig. 3**

- 10 *Standing at rear of the bike check muffler alignment from side to side. The mufflers should not be canted or cocked to one side or the other. Adjust if necessary.*
- 11 *Torque muffler mounting nuts and stock collector clamps to 2.3 kg-m (16.5 lb-ft).*
- 12 *Install supplied spring hooks between the Yoshimura spring hook tabs and the Yoshimura tailpipes.*
- 13 *It is recommended that the entire exhaust system be wiped down with rubbing alcohol to remove oil and fingerprints. This will help prevent tarnishing of the finish after the exhaust is heated up.*
- 14 *Before starting motorcycle, check for proper clearance between new exhaust system and motorcycle (i.e. swingarm, chain, etc.). If any problem is found, please carefully follow through the installation steps again. If problem still persists, please call Yoshimura technical department at (800)634-9166 / in CA (909)628-4722.*

NOTE: After starting motorcycle, it is normal for new exhaust system and mufflers to emit smoke until oil residue burns off.

#141126(2,5,7)


Parts Diagram

NO.	DESCRIPTION	QTY	PART #
1	Yoshimura Stainless Steel Tailpipe (Left Side)	1	1411-426
2	Yoshimura Stainless Steel Tailpipe (Right Side)	1	1411-427
3	Yoshimura TRS Muffler (Left Side) with Carbon Fiber Sleeve with Stainless Steel Sleeve with Titanium Sleeve	1	CRTRS186WL SRTRS186WL TRTRS186WL
4	Yoshimura TRS Muffler (Right Side) with Carbon Fiber Sleeve with Stainless Steel Sleeve with Titanium Sleeve	1	CRTRS186W SRTRS186W TRTRS186W
5	Stainless Steel Muffler Clamp Stainless Steel or Titanium Sleeve use Carbon Fiber Sleeve use	2	CTS106X CTS106
6	Small Exhaust Spring	6	RACE-SPX-1
7	Spring Hook Tab	2	1411-SH
**	Muffler Clamp Heat Insulator	2	HT SHLDTRS
**	TRS Insert Kit	2	TRS-INS-BK
**	Spring Puller Tool	1	ST-200
**	Yoshimura Vinyl Sticker	1	17029