



YOSHIMURA

RESEARCH & DEVELOPMENT OF AMERICA, INC.

5420 DANIELS STREET STE A, CHINO CA, 91710 · (800)634-9166 · (909)628-4722 · FACSIMILE (909)591-2198

www.yoshimura-rd.com

YOSHIMURA PERFORMANCE EXHAUST SYSTEM
2008-2012 POLARIS RZR/S/4 800
Spark Arrested

394002G550 RS-8 SLIP-ON SYSTEM WITH STAINLESS STEEL SLEEVE



THIS PRODUCT IS DESIGNED FOR USE IN CLOSED COURSE RACING AND IS NOT INTENDED FOR ANY OTHER USE.



CAUTION: The muffler packing on this system should be replaced every 1,000 miles. Failure to follow recommended muffler re-packing interval can cause muffler damage and may void the warranty.



NOTE: IN THE STATE OF CALIFORNIA, IT IS ILLEGAL TO MODIFY THE EMISSION CONTROL SYSTEM, WHICH INCLUDES THE CARBURETORS OF ANY VEHICLE.

Caution: Exhaust system can be extremely hot. Let vehicle cool down before beginning installation. Always wear hand and eye protection and take precautionary measures to avoid injury.

Note: Read through all instructions before beginning installation.

Tools Needed:

Metric Socket Set
Standard Socket Set
Torx Bit Set
Metric Combination Wrench Set
Standard Combination Wrench Set
3/8" Ratchet and Extension
Torque Wrench

Installation Steps:

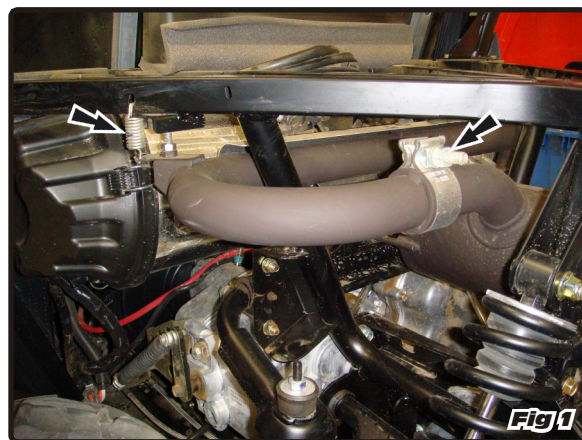
1. Remove the bed and rear bumper.
2. Loosen the stock collector clamp that connects the stock muffler to the stock mid-pipe (see Fig. 1). Remove stock mid-pipe.

NOTE: Stock mid-pipe must be removed to allow clearance for muffler removal.

3. Remove the stock muffler (see Fig. 2 for direction of removal).
4. Inspect stock gasket, if necessary replace with new (OEM PN: 3610047). Reinstall stock mid-pipe.
5. Slide the supplied exhaust clamp over the inlet of the Yoshimura tailpipe.
6. Slide the Yoshimura tailpipe onto the stock midpipe with gasket and slide the Yoshimura muffler onto the Yoshimura tailpipe at the same time.

NOTE: Due to tight clearances between the frame and the Yoshimura exhaust system, the Yoshimura tailpipe and Yoshimura muffler must be installed in the frame at the same time.

7. Remove stock muffler mount grommet. Insert supplied grommet. Insert supplied spacer into rubber grommet then install into frame. Mount Yoshimura muffler to frame using the supplied bolt, washer, and nut (See Parts Diagram on page 4).



8. Connect the Yoshimura muffler to the Yoshimura tailpipe using the supplied exhaust springs.

9. Install support pins into muffler by sliding them through rubber grommets.

Note: Left and right pins are of different length. Check parts diagram for correct fitment.

Install nut onto pin, then screw into muffler. Adjust to get best fit and tighten.

10. Torque the muffler mount bolt to 2.9 kg-m (21 lb-ft).

11. Torque the supplied exhaust clamp to 1.25 kg-m (9 lb-ft).

NOTE: It is recommended that the muffler and tailpipe be wiped down with rubbing alcohol to remove oil and fingerprints. This will help prevent tarnishing of the finish after the exhaust is heated up.

12. Reinstall the bed and rear bumper.

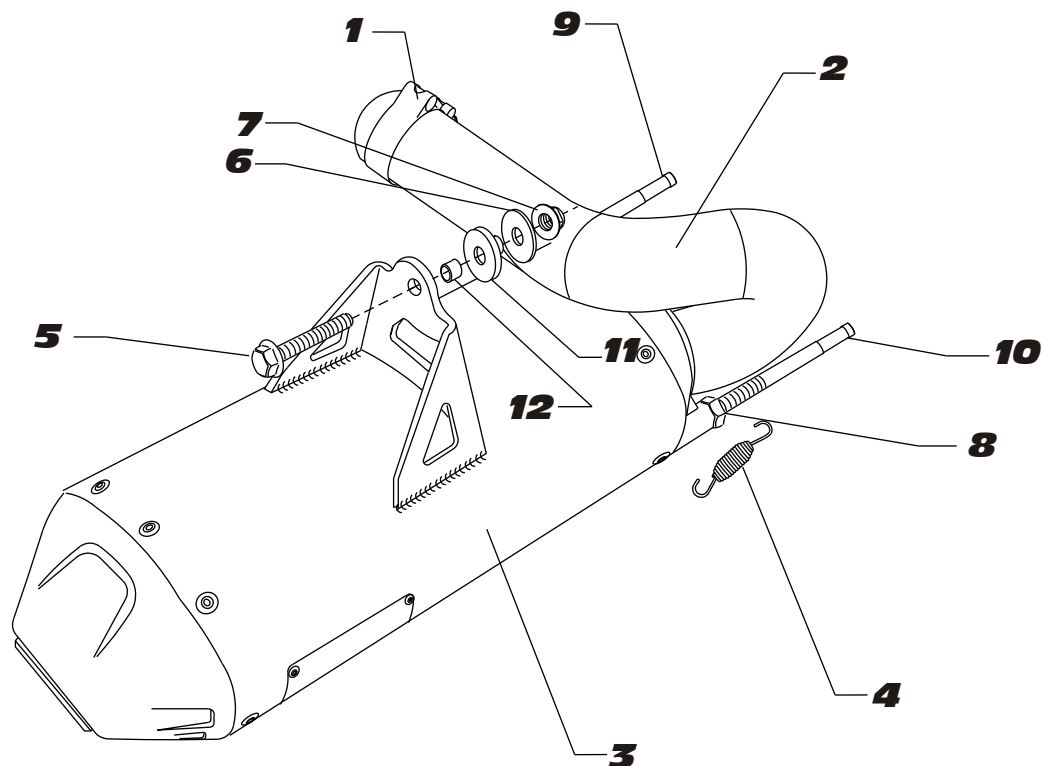
13. Before starting the vehicle, check for proper clearance between the new exhaust system and rear suspension (i.e. tires, swing-arm, brakes, rear shocks, frame, etc). If any problem is found, please carefully follow through the installation steps again. If problem still persists, please call Yoshimura technical department at (800) 634-9166 / in CA (909) 628-4722 .

NOTE: After starting the vehicle, it is normal for a new exhaust system and muffler to emit smoke until oil residue burns off.

Fuel Injection Mapping Suggestions:

For maximum performance, fuel injection mapping is recommended for competition use only.

Note: It is illegal to modify the fuel injection system of any vehicle in the state of California.

394002G550**S=STOCK****Parts Diagram**

NO.	DESCRIPTION	QTY	PART #
1	Stainless Steel Clamp	1	20062
2	Yoshimura Tailpipe	1	2540-152
3	Yoshimura Muffler Assembly with Aluminum Sleeve	1	394002G550-CMA
4	Small Exhaust Springs	2	RACE-SPX-1
5	10mm x 25mm Flanged Hex Head Bolt	1	M10X35H
6	10mm ID x 30mm OD Steel Washer	1	10X30WSH
7	10mm Flanged Nut	1	10MMFNUT
8	8mm Nut	2	8MMNUT
9	Threaded Rod M8X130MM	1	M8X130TR
10	Threaded Rod M8X145MM	1	M8X145TR
11	Exhaust Mount Rubber Grommet	1	Z1031
12	Rubber Grommet Spacer	1	Z1031-SP-B
**	Offroad Endcap Plug	1	347PLUG
**	Spring Puller Tool	1	ST-200
**	Yoshimura Vinyl Sticker	1	17029



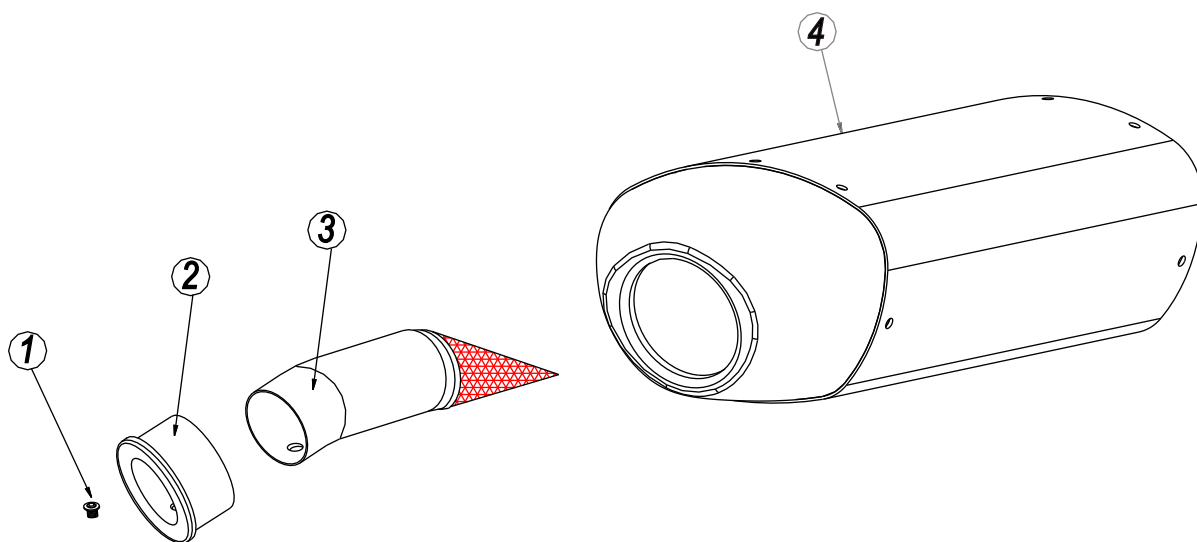
YOSHIMURA

RESEARCH&DEVELOPMENT OF AMERICA, INC.

5420 DANIELS STREET SUITE A, CHINO, CA 91710 · (800)634-9166 · (909)628-4722 · FACSIMILE (909)591-2198

www.yoshimura-rd.com

Yoshimura Spark Arrester Cleaning Information



Parts Diagram

Caution: *Muffler can be extremely hot. Let muffler cool down before removing spark arrester.*

NO.	DESCRIPTION	QTY	PART #
1	6mmX18mm Button Head Cap Screw	1	M6x12BHS
2	Aluminum Ring	1	RS8-RING-1625
3	TEC-SD7	1	TEC-SD7
4	Yoshimura Muffler Assembly	1	**

Note: *Read through all instructions before beginning disassembly.*

Tools Needed:

5mm Allen Key
Wire Brush
Pair of Gloves
Safety Glasses

Cleaning Steps:

1 Using a 5mm Allen key, remove the 6mm x 12mm Socket Head Bolt located in the muffler exhaust tip. (See Parts Diagram for location)

2 Remove the spark arrester from the muffler.

3 Using a wire brush, remove carbon deposits from spark arrester screen. Inspect the screen for excessive wear or damage. If spark arrester is excessively worn or damaged, the spark arrester must be replaced. Cleaning and inspection should be performed at the same time as muffler re-packing. Re-packing is recommended every 1,000 miles.

CAUTION: Gloves and Safety Glasses should be worn while cleaning spark arrester.

4 Re-install spark arrester and 6mm x 12mm bolt into muffler assembly. Torque bolt to 1.0 kg-m (7.3 lb-ft).

NOTE: It is highly recommended that a low strength "Loc-tite" is used on the bolt.