



# YOSHIMURA

RESEARCH & DEVELOPMENT OF AMERICA, INC.

5420 DANIELS STREET STE A, CHINO CA 91710 · (800)634-9166 · (909)628-4722 · FACSIMILE (909)591-2198

[WWW.YOSHIMURA-RD.COM](http://WWW.YOSHIMURA-RD.COM)

## OFF-ROAD PERFORMANCE EXHAUST SYSTEM

**Kawasaki**  
**2012-2014**  
**KX450F**

<b>244701D220</b>	TITANIUM FULL SYSTEM WITH CARBON FIBER SLEEVE
<b>244701D720</b>	TITANIUM FULL SYSTEM WITH TITANIUM SLEEVE

NOTE: THIS SYSTEM IS DESIGNED FOR USE IN CLOSED COURSE COMPETITION AND IS NOT INTENDED FOR ANY OTHER USE.



**THIS PRODUCT IS DESIGNED FOR USE IN CLOSED COURSE RACING AND IS NOT INTENDED FOR ANY OTHER USE.**



CAUTION: The muffler packing on this system **MUST** be replaced every 6-8 hours of use, or every 1-2 motos. Failure to follow recommended muffler re-packing interval can cause muffler damage and may void the warranty.



NOTE: IN THE STATE OF CALIFORNIA, IT IS ILLEGAL TO MODIFY THE EMISSION CONTROL SYSTEM, WHICH INCLUDES THE FUEL INJECTION OF ANY VEHICLE.

**Caution:** Exhaust system can be extremely hot. Let motorcycle cool down before beginning installation. Always wear hand and eye protection and take precautionary measures to avoid injury.

**Note:** Read through all instructions before beginning installation.

## Tools Needed:

Metric Socket Set  
Metric Wrench Set  
Ratchet Wrench and Extension  
Torque Wrench

## Installation Steps:

### 1. Remove stock exhaust system.

- Remove right rear number plate (see Fig. 1 for bolt locations).
- Loosen exhaust clamp and slide forward onto header.
- Remove muffler mounting bolts and remove muffler. ( See Fig. 2 )
- Remove exhaust clamp from header.
- Remove header nuts. ( See Fig. 3 )
- Remove header.



Fig. 1



Fig. 2

### 2. Install Yoshimura exhaust system

- Inspect stock exhaust header gasket. If damaged, please contact your local dealership to acquire a new header gasket, PN: 11061-0082.
- Install manifold and flange using stock nuts. Do not torque at this time. Leave loose to ease header fitment. (Note: Install exhaust springs onto flange before installation onto exhaust port.)
- Install Yoshimura header in exhaust manifold. Install springs onto header using the supplied spring puller tool.
- Insert rubber grommet and aluminum spacer into muffler mounting bracket. (Note: Aluminum spacer is meant to rest between muffler and subframe. See Fig. 4)
- Remove spring between muffler tailpipe and muffler to ease installation.

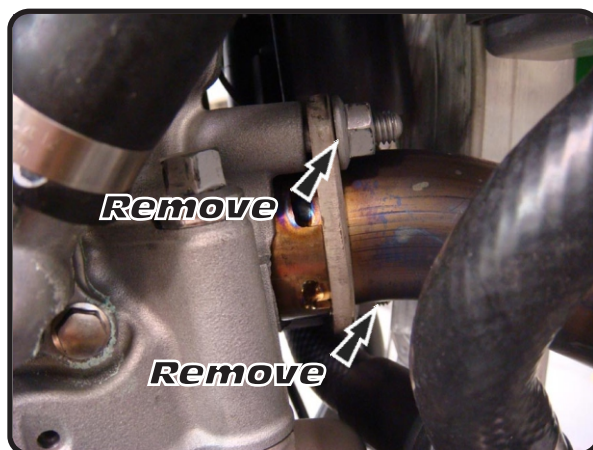


Fig. 3

-Insert muffler/tailpipe assembly onto header outlet.  
(Note: Yoshimura system does not use stock gasket or exhaust clamp.)

-Install supplied muffler mounting bolt and washer.  
See parts diagram for order of components for the muffler mounting location.

-Install stock bolt into tailpipe mounting bracket. Do not torque at this time.

-Install exhaust spring from tailpipe to header.

-Torque header nuts to 15 lb-ft (20 N-m).

-Torque tailpipe mounting bolt to 15 lb-ft (20 N-m).

-Torque muffler mounting bolt to 18 lb-ft (25 N-m).

-Install exhaust spring from tailpipe to muffler.

3. It is recommended that the muffler and tailpipe be wiped down with rubbing alcohol to remove oil and fingerprints. This will help prevent tarnishing of the finish after the exhaust is heated up.
4. Reinstall number plate using reverse steps of removal.
5. Before starting motorcycle, check for proper clearance between new exhaust system and rear suspension (i.e. tire, swingarm, brake, rear shock, etc). If any problem is found, please carefully follow through the installation steps again. If problem still persists, please call Yoshimura tech department at (800) 634-9166 / in CA (909) 628-4722.

**NOTE:** After starting motorcycle, it is normal for new exhaust system and muffler to emit smoke until oil residue burns off.

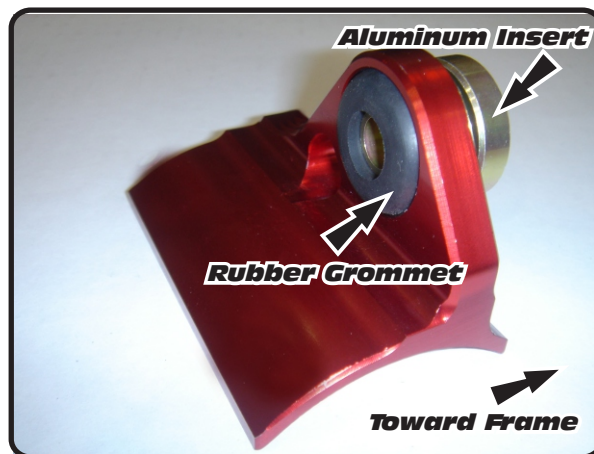
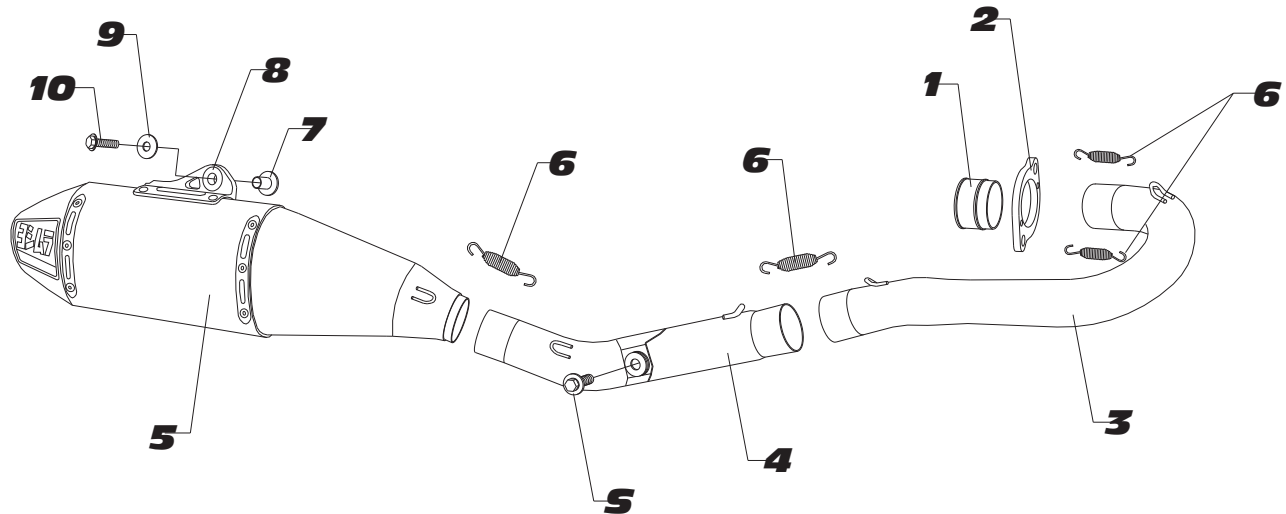


Fig. 4

**#244701D(220,720)**

**S=STOCK**

Parts Diagram

NO.	DESCRIPTION	QTY	PART #
1	Yoshimura Stainless Manifold	1	2446SDM
2	Yoshimura Stainless Flange	1	2386SDR-TI-0
3	Yoshimura Titanium Header	1	2446-704-A
4	Yoshimura Titanium Tailpipe	1	2446-745-00
5	Yoshimura RS4 Muffler with Carbon Fiber Sleeve with Titanium Sleeve		244701D220-RMA 244701D720-RMA
6	Medium Exhaust Spring	4	RACE-SPS-1
7	Aluminum Insert for Rubber Grommet	1	ALS-003
8	Muffler Mount Rubber Grommet	1	Z1022
9	8mm Large Washer	1	8MMWASHERL
10	8mm x 30mm Flange Bolt	1	M8X30H
**	Spring Puller Tool	1	ST-200
**	Yoshimura Offroad Endcap Plug	1	347PLUG
**	Yoshimura Vinyl Sticker	1	17029
<b>OPTIONAL REPLACEMENT PARTS</b>			
	RS4 Sound Insert		INS-16-K
	2m-MAX Sound Insert		INS-2M26-K
	Spark Arrestor		SA-08-K
	Re-pack Kit		REPACK-RS4-PK11



# YOSHIMURA

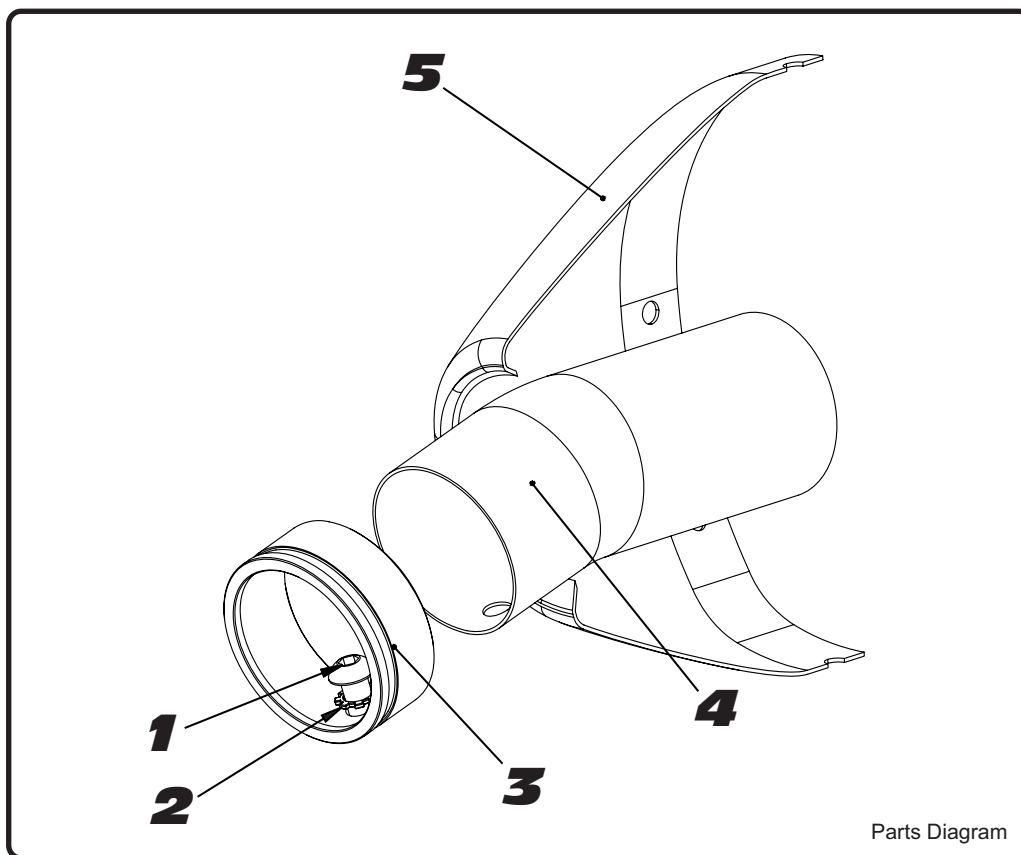
RESEARCH&DEVELOPMENT OF AMERICA, INC.

5420 DANIELS STREET SUITE A, CHINO, CA 91710 · (800)634-9166 · (909)628-4722 · FACSIMILE (909)591-2198

**[www.yoshimura-rd.com](http://www.yoshimura-rd.com)**

**INS-16-K**

**YOSHIMURA RS4 LOW VOLUME INSERT KIT**



Parts Diagram

NO.	DESCRIPTION	QTY	PART #
1	6mm X 12mm Button Head Cap Screw	1	M6X12BHS
2	6mm Lock Washer	1	6MMLCKWSHR-TH
3	RS4 Aluminum Insert Ring	1	RS4-RING-1375
4	Low Volume Sound Insert	1	INS-W-00
5	Yoshimura Exhaust	**	**

1. Remove small allen head bolt.
2. Remove current insert and ring.
3. Insert the Yoshimura insert into the end of the muffler and secure using the small allen head bolt.

**NOTE:** It is recommended that a low strength "Loc-tite" is used on the small allen head bolt.