



YOSHIMURA

RESEARCH&DEVELOPMENT OF AMERICA, INC.

5420 DANIELS STREET STE A, CHINO CA., 91710 · (800)634-9166 · (909)628-4722 · FACSIMILE (909)591-2198

www.yoshimura-rd.com

Signature Series

Yamaha Viking

336802C550

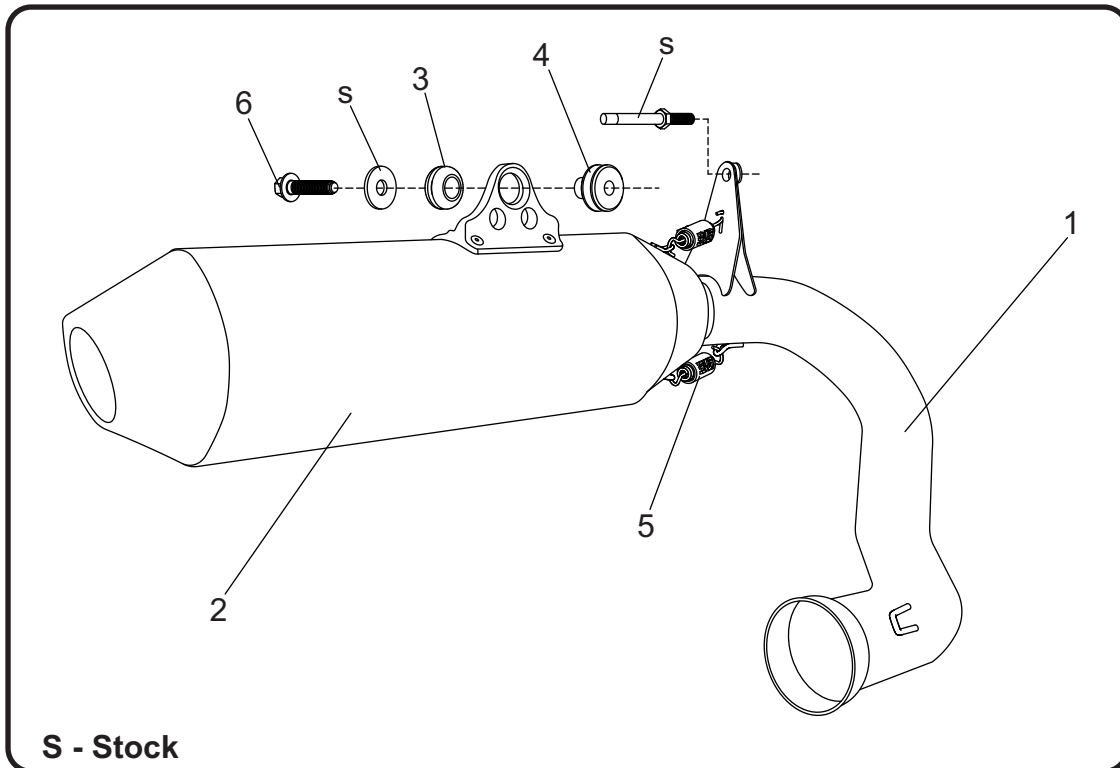
RS2 Slip-On Exhaust System



This product is 50-state legal and complies with Federal and State regulations. Any attempts to modify this product will render it non-compliant with Federal law and void warranty. If modified, the vehicle can no longer be used on public roads and can only be used for off-highway closed course competition. In the state of California, it is illegal to modify the emission control system, which includes the fuel injection system of any vehicle.



Assembly Diagram



No.	Item	Description	Qty.
1	33680-151	Yoshimura Tailpipe	1
2	****	Signature Series Muffler	1
3	Z1022	Rubber Bushing	1
4	ALS-004	Aluminum Spacer	1
5	RACE-SPX-1	Small Exhaust Spring	2
6	M8X45H	8mm x 45mm Flanged Hex Head Bolt	1
**	ST-200	Spring Puller Tool	1
**	347PLUG	Yoshimura Wash Plug	1
**	17029	Sticker Kit Sheet	1

**** Signature Series muffler replacement part number unavailable. Repair or replacement of Signature Series exhaust systems is only available directly through Yoshimura R&D of America, Inc.

Removal

1. Tilt the rear bed back to gain access to the stock exhaust system.

Note: Removal of the rear bed may ease installation but is not required. If desired, follow bed removal steps in Factory Service / Owners Manual.

2. Remove the stock muffler heatshield by removing the two push clips and two bolts.
3. Remove the stock exhaust springs on muffler tailpipe to header connection.
4. While securely supporting the stock muffler assembly, remove the muffler mount bolt. Carefully remove the muffler by sliding forward toward the front of the vehicle disconnecting at the tailpipe and header connection. Then slide muffler hanger pin out toward the rear of the vehicle.

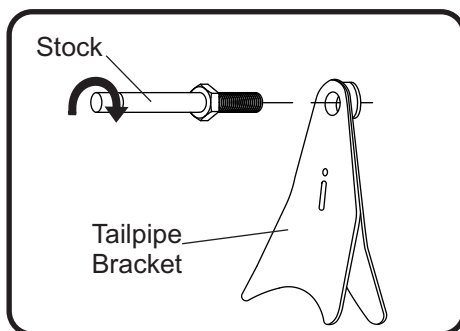
Note¹: The rubber muffler hanger will be re-used with the Yoshimura slip-on system. Do not remove.

Note²: The stock exhaust gasket will be re-used with the Yoshimura slip-on system. Inspect and replace if necessary.

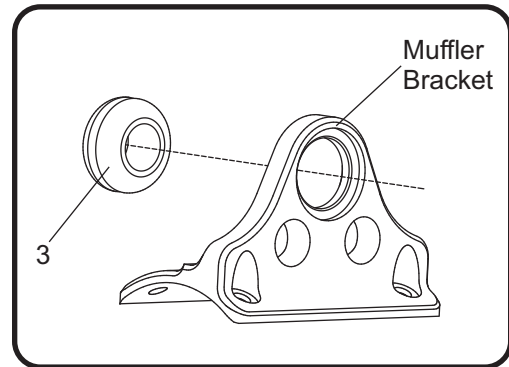
5. Remove the stock muffler hanger pin from the stock muffler assembly. It will be used with the Yoshimura slip-on system.

Installation

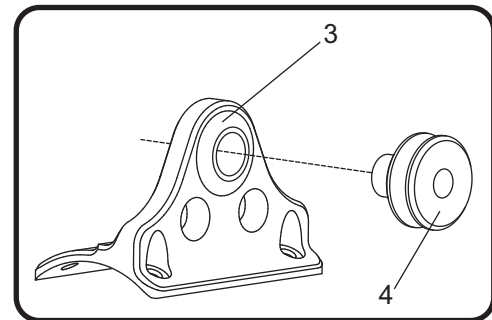
1. Install the stock muffler pin onto Yoshimura tailpipe bracket. See diagram for proper orientation.



2. Install (No. 3) Z1022, rubber grommet into Yoshimura muffler bracket as shown in the diagram.

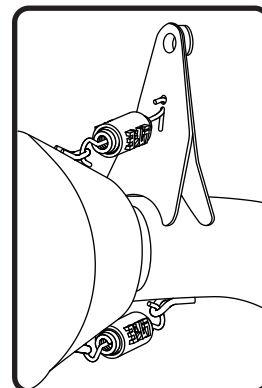


3. Install (No. 4) ALS-004, aluminum spacer into (No. 3) Z1022, rubber grommet as shown below.



4. Install (No. 1) 33680-151, Yoshimura tailpipe by sliding the muffler hanger pin into the rubber muffler hanger. Align Yoshimura tailpipe inlet to the stock header outlet and re-install the stock exhaust springs.
5. Slide (No. 2) Yoshimura muffler onto (No. 1) 33680-151, Yoshimura tailpipe outlet and secure Yoshimura muffler to chassis using the provided (No. 6) M8X45H, mounting bolt and stock washer as shown in the parts diagram. Torque to factory specification.
6. Install (No. 5) RACE-SPX-1, small exhaust spring onto muffler and tailpipe connection as shown below.

Note: Install top spring through the "i" cutout in the tailpipe bracket.



7. Re-install the stock muffler heatshield using the opposite steps of removal.
8. Before starting vehicle, check for proper clearance between new exhaust system and rear suspension (i.e. tire, control arms, brakes, rear shock, and etc.) If any problem is found, please carefully follow through the installation steps again. If problem still persists, please call Yoshimura Tech Department at (800) 634-9166 / in CA (909) 628-4722.
9. It is recommended that the muffler and tailpipe be wiped down with rubbing alcohol to remove oil and fingerprints. This will help prevent tarnishing of the finish after the exhaust is heated up.

Note: After starting motorcycle, it is normal for new exhaust system and muffler to emit smoke until oil residue burns off.