



# YOSHIMURA

RESEARCH&DEVELOPMENT OF AMERICA, INC.

5420 DANIELS STREET STE A, CHINO CA., 91710 · (800) 634-9166 · (909) 628-4722 · FAX (909) 591-2198

[www.yoshimura-rd.com](http://www.yoshimura-rd.com)

## *Signature Series*

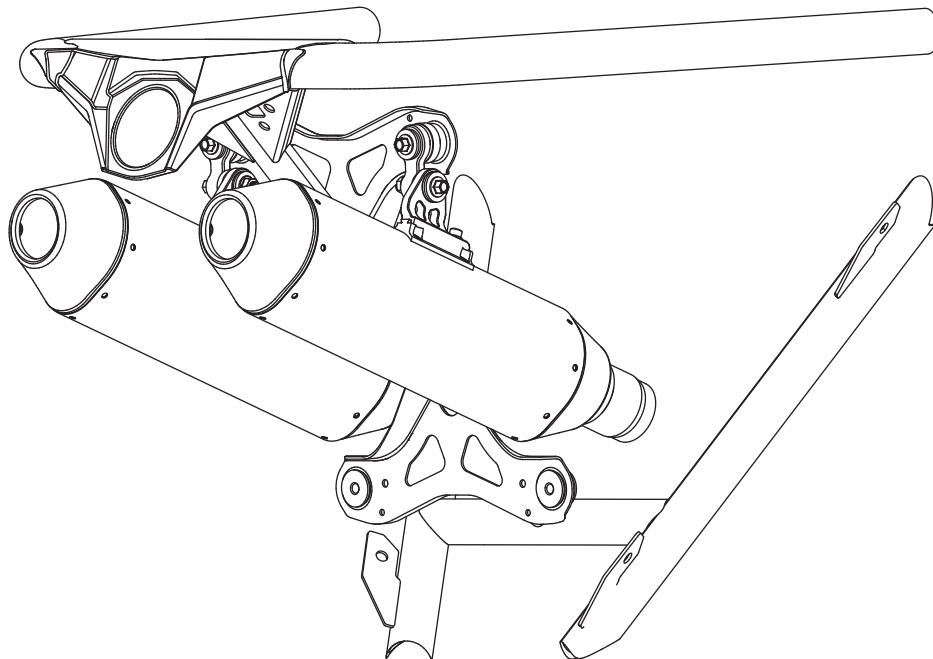
Qualified Manufacturer Declared "Replacement Part"

**2013**

**Can-Am Maverick**

**391502F550 (SS/SS)**

**RS-2 Stainless Steel Slip-On**



Signature Series systems are:

- CARB/EPA tail-pipe emissions compliant.
- Marked with appropriate EPA noise labels.
- Independent laboratory tested for EPA new vehicle noise compliance.

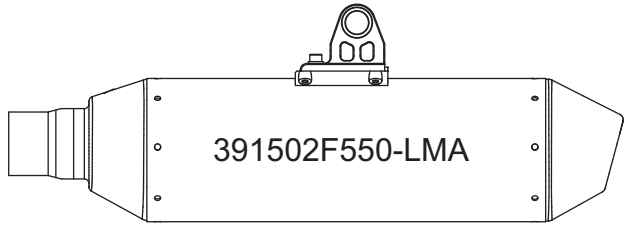
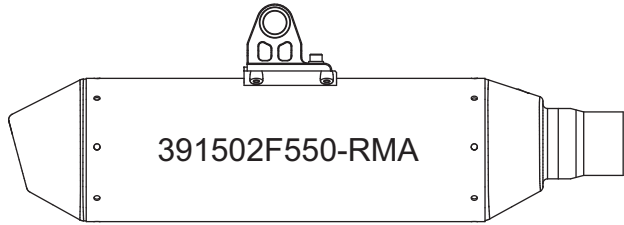


CAUTION: The muffler packing on this system MUST be replaced every 6-8 hours of use, or after each moto. Failure to follow recommended muffler re-packing interval can cause muffler damage and may void the warranty.

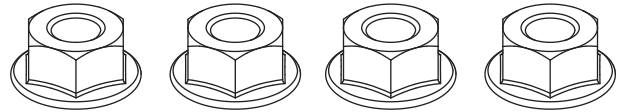


NOTE: IN THE STATE OF CALIFORNIA, IT IS ILLEGAL TO MODIFY THE EMISSION CONTROL SYSTEM, WHICH INCLUDES THE CARBURETORS OF ANY VEHICLE.

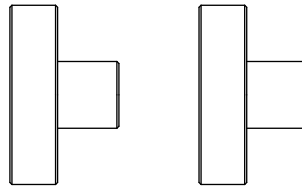
# HARDWARE KIT COMPONENTS



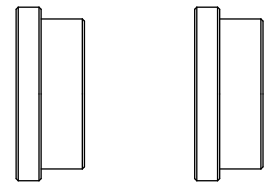
Left and Right Muffler Assembly



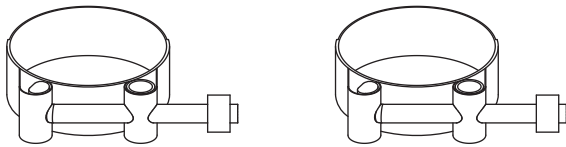
8MMNUT  
8mm Flange Nut



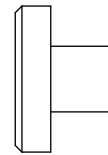
ALS-044  
Aluminum Spacer



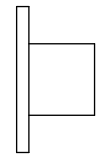
ALS-045  
Aluminum Spacer



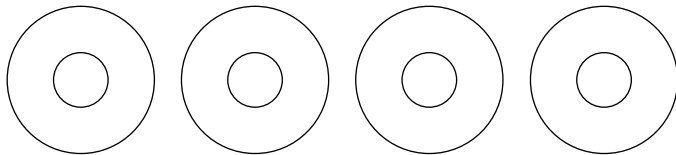
20060  
Exhaust Clamp



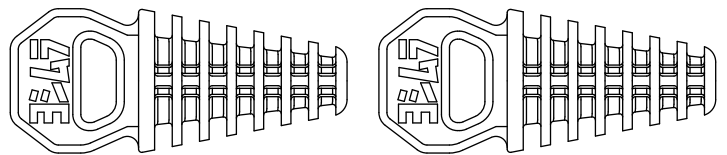
ALS-002  
Aluminum Spacer



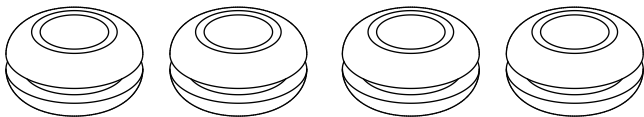
ALS-003  
Aluminum Spacer



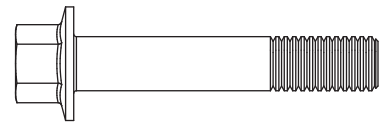
8MMWASHERL  
8mm Large Washer



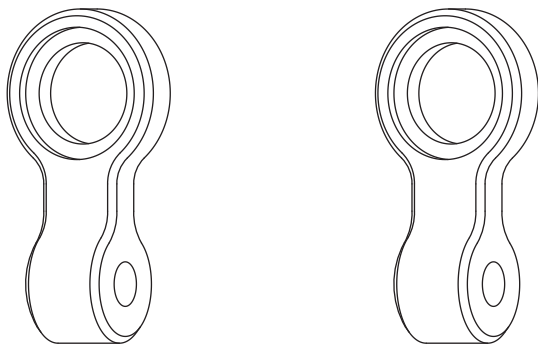
347PLUG  
Muffler Wash Plugs



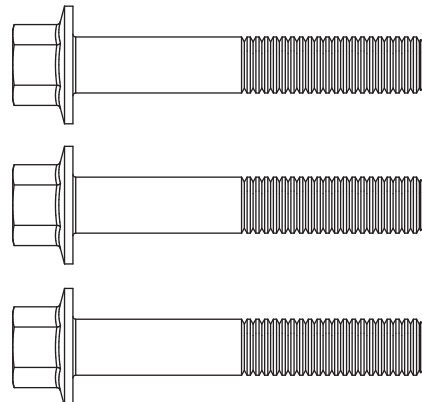
Z1022  
Rubber Grommet



M8X45H  
8mm x 45mm Flanged Hex Head Bolt



39900-RS4BRKT  
Muffler Hanger Bracket



M8X50H  
8mm x 50mm Flanged Hex Head Bolt

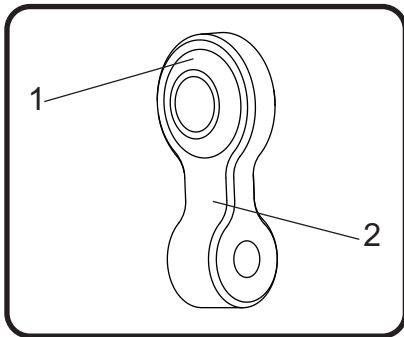
## Removal

1. Loosen and remove the two muffler clamps securing muffler to exhaust pipes.
2. Unhook muffler supports and remove muffler.
3. Remove the (2) upper rubber muffler support inserts from the frame.

Note: The lower mounts will not be used with the Yoshimura slip-on exhaust system.

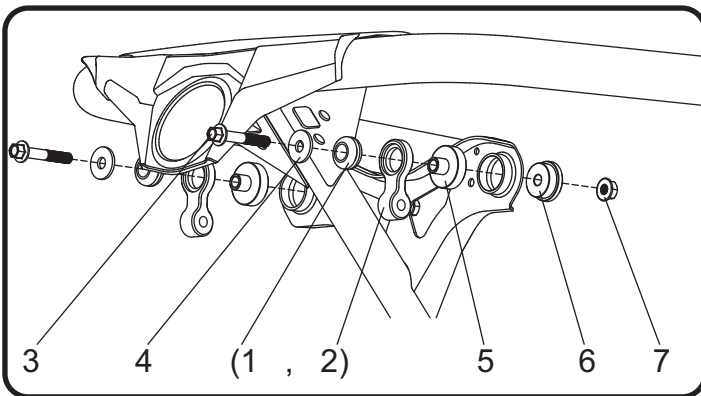
## Installation

1. Install (1) Z1022 rubber grommet into both (2) 39900-RS4BRKT muffler hanger bracket.

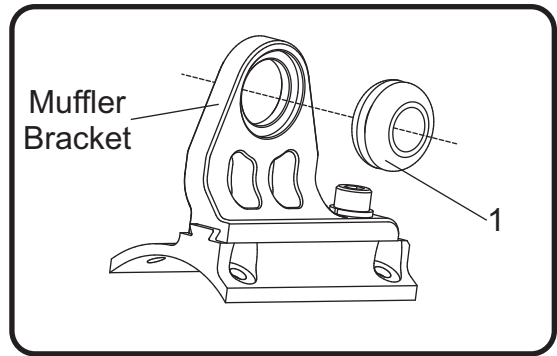


2. Install (1,2) 39900-RS4BRKT muffler hanger bracket as shown in the diagram. Orientation is as follows: (3) M8X50H bolt, (4) 8MMWASHERL washer, (1,2) 39900-RS4BRKT muffler hanger bracket, (5) ALS-044 aluminum spacer, (6) ALS-045 aluminum spacer, (7) 8MMNUT nut.

Torque bolt to 23Nm (2.3 kg-m, 17 ft-lb).

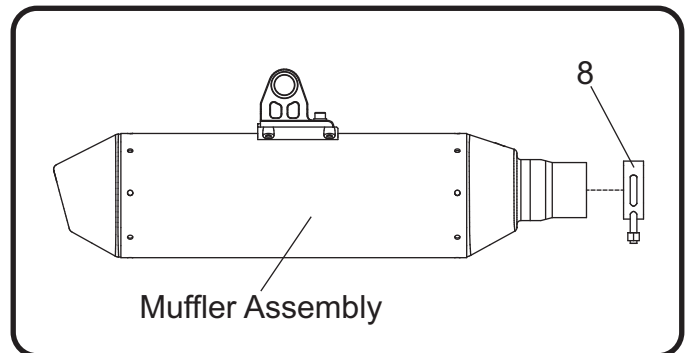


3. Install (1) Z1022 rubber grommets into left and right muffler brackets.



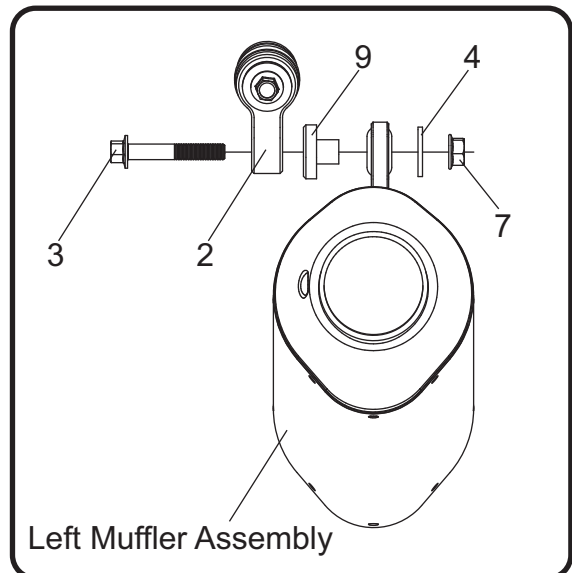
4. Slide (8) 20060 exhaust clamp over left and right muffler assembly tailpipe.

Note: For ease of adjustment and accessibility, exhaust clamp stem and nut should point down.



5. Install left muffler assembly by sliding over the stock header outlet. Secure left muffler assembly as shown in the diagram. Orientation is as follows: (3) M8X50H bolt, (2) 39900-RS4BRKT muffler hanger bracket, (9) ALS-002 aluminum spacer, Left Muffler Assembly, (4) 8MMWASHERL washer, (7) 8MMNUT nut.

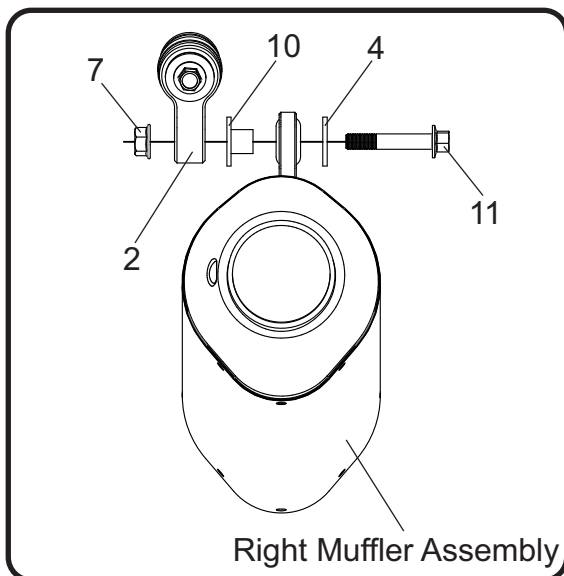
Torque bolt to 23Nm (2.3 kg-m, 17 ft-lb).



6. Install right muffler assembly by sliding over the stock header outlet. Secure right muffler assembly as shown in the diagram. Orientation is as follows:

(7) 8MMNUT nut, (2) 39900-RS4BRKT muffler hanger bracket, (10) ALS-003 aluminum spacer, Right Muffler Assembly, (4) 8MMWASHERL washer, (11) M8x45H bolt.

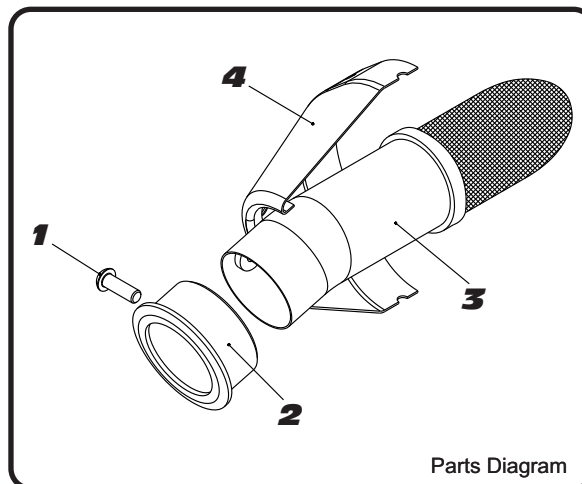
Torque bolt to 23Nm (2.3 kg-m, 17 ft-lb).



7. Torque left and right exhaust clamps to 10Nm (1.0 kg-m, 8 ft-lb).
8. Before starting vehicle, check for proper clearance between new exhaust system and rear suspension (i.e. tire, control arm, brakes, rear shock, and etc.) If any problem is found, please carefully follow through the installation steps again. If problem still persists, please call Yoshimura Tech Department at (800) 634-9166 / in CA (909) 628-4722.
9. It is recommended that the muffler and tailpipe be wiped down with rubbing alcohol to remove oil and fingerprints. This will help prevent tarnishing of the finish after the exhaust is heated up.

Note: After starting vehicle, it is normal for new exhaust system and muffler to emit smoke until oil residue burns off.

## Spark Arrestor Maintenance



NO.	DESCRIPTION	QTY	PART #
1	6mm X 18mm Button Head Cap Screw	1	M6X18BHS
2	RS2 Ring 1.625"	1	DS4-RING-1625
3	TEC-SD12 Spark Arrestor	1	TEC-SD12
4	Yoshimura Exhaust	**	**

- Using a 4mm Allen key, remove the bolt that secures the aluminum ring and spark arrestor to the muffler (see Parts Diagram for location).
  - Remove the spark arrestor from the muffler.
  - Using a wire brush, remove carbon deposits from spark arrestor screen. Inspect the screen for excessive wear or damage. If spark arrestor is excessively worn or damaged, the spark arrestor must be replaced. Cleaning and inspection should be performed after every 60 hours of use.
- CAUTION: Gloves and safety glasses should be worn while cleaning spark arrestor.
- Re-install spark arrestor and aluminum ring. Torque the spark arrestor securing bolt to 1.0 kg-m (7.3 lb-ft).  
NOTE: It is recommended that a low strength "Loc-tite" is used on the spark arrestor securing bolt.

## Optional Replacement Parts

Spark Arrestor	SA-06-K
Re-pack Kit	REPACK-RS2-PK15