



# YOSHIMURA

RESEARCH & DEVELOPMENT OF AMERICA, INC.

5420 DANIELS STREET STE A, CHINO CA, 91710 · (800)634-9166 · (909)628-4722 · FACSIMILE (909)591-2198

[www.yoshimura-rd.com](http://www.yoshimura-rd.com)

## OFF-ROAD PERFORMANCE EXHAUST SYSTEM

**SUZUKI**  
**2006-2010**  
**LT-R450**

**3115007350**

STAINLESS STEEL COMPETITION FULL SYSTEM WITH ALUMINUM SLEEVE

**3115017350**

TITANIUM PRO FULL SYSTEM WITH ALUMINUM SLEEVE

NOTE: THIS SYSTEM IS DESIGNED FOR USE IN CLOSED COURSE COMPETITION AND IS NOT INTENDED FOR ANY OTHER USE.



THIS PRODUCT IS DESIGNED FOR USE IN CLOSED COURSE RACING AND IS NOT INTENDED FOR ANY OTHER USE.



CAUTION: The muffler packing on this system MUST be replaced every 6-8 hours of use, or after each moto. Failure to follow recommended muffler re-packing interval can cause muffler damage and may void the warranty.



NOTE: IN CALIFORNIA, IT IS ILLEGAL TO MODIFY THE EMISSION CONTROL SYSTEM. THIS INCLUDES THE FUEL INJECTION SYSTEM OF ANY VEHICLE.

**Caution:** Exhaust system can be extremely hot. Let motorcycle cool down before beginning installation.

**Note:** Read through all instructions before beginning installation.

## Tools Needed:

12mm Socket  
Ratchet and Extension  
4mm, 5mm, and 6mm Allen Wrench  
Torque Wrench

## Installation Steps:

- 1 Unbolt and remove stock muffler, stock heatshield, and stock header (see Fig. 1, 2, and 3 for bolt locations).
- 2 Remove stock exhaust port gasket and replace with new stock Suzuki exhaust port gasket (not supplied).
- 3 Install Yoshimura heatshield onto Yoshimura header using the supplied Heatshield Mounting Bolts.
- 4 Install Yoshimura header using stock nuts. Leave nuts loose until all components are attached.
- 5 Install supplied rubber grommets into aluminum muffler mounting brackets. Install aluminum inserts into rubber grommets (make sure shoulder of aluminum insert faces toward the frame, see Fig. 4).

**NOTE:** Due to variations in individual ATV subframes, extra aluminum inserts have been provided with the installation kit. After trial mounting the muffler it may be necessary to switch and use thinner and or thicker aluminum inserts (or a combination of both, i.e. 1 thick and 1 thin). This will allow fine tuning of the muffler position to ensure it appears level from the rear of the ATV.

- 6 Slide Yoshimura tailpipe and muffler onto Yoshimura header.
- 7 Mount muffler to chassis using supplied bolts and washers.



Fig. 1



Fig. 2

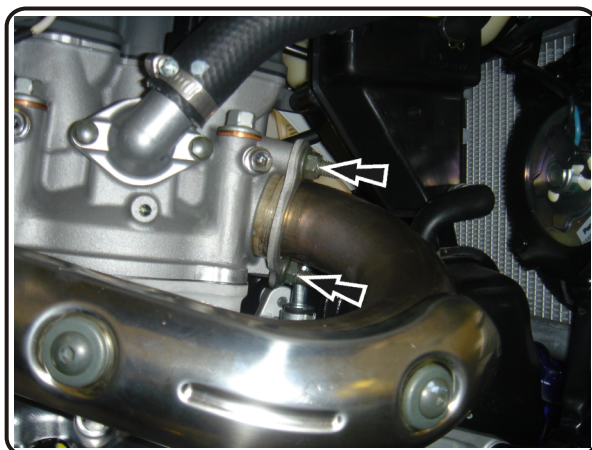


Fig. 3

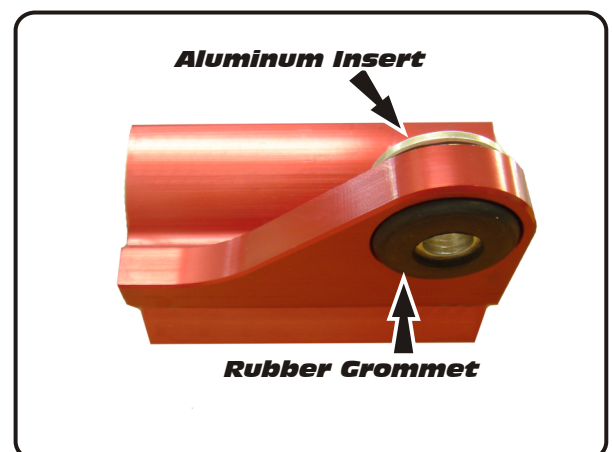
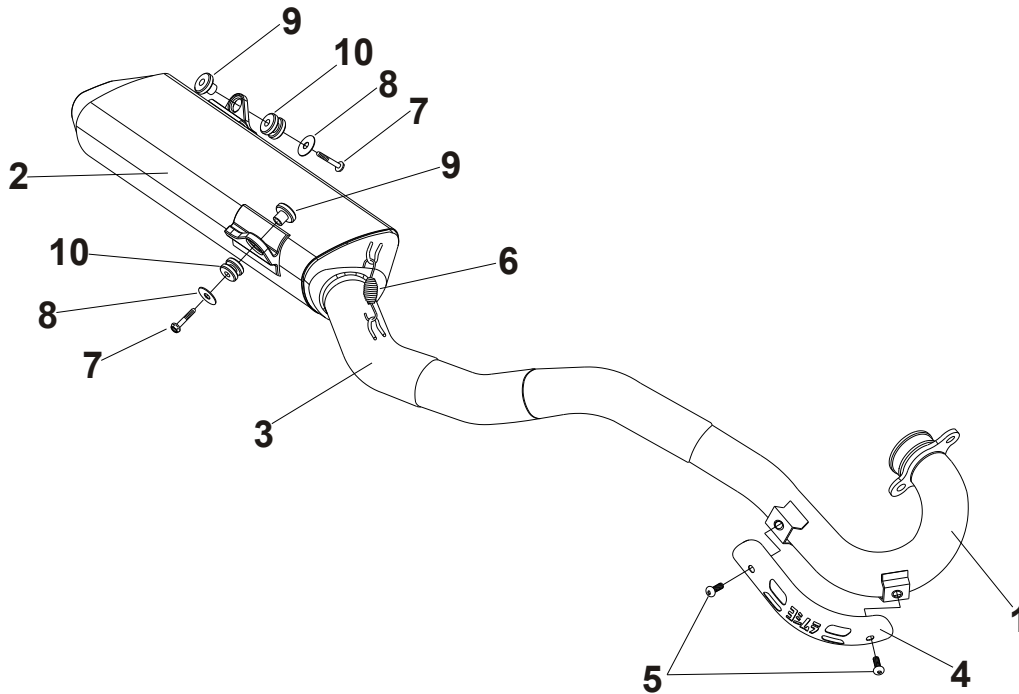


Fig. 4

- 8 Torque muffler mounting bolts to 2.5 kg-m (18 lb-ft).
- 9 Torque header nuts to 1.0 kg-m (7.3 lb-ft).
- 10 It is recommended that the exhaust system be wiped down with rubbing alcohol to remove oil and fingerprints. This will help prevent tarnishing of the finish after the exhaust is heated up.
- 11 Before starting engine check for proper clearance between new exhaust system and chassis body work or any moving parts. (i.e. rear brake, frame, tire, bodywork etc.) If any problem is found, please carefully follow through the installation steps again. If problem still persists, please call Yoshimura technical department at (800)634-9166, in CA (909)628-4722.

**NOTE:** After starting motorcycle, it is normal for new exhaust system and muffler to emit smoke until oil residue burns off.

**#3115017350 / #3115007350**



Parts Diagram

NO.	DESCRIPTION	QTY	PART #
1	Yoshimura Header w/ Heatshield Brackets Stainless Steel Competition Titanium Pro	1	2115-101-A 2115-701-A
2	Yoshimura Race Muffler	1	2115503-CMA
3	Yoshimura Tailpipe Stainless Steel Competition Titanium Pro	1	2115-144 2115-744
4	Yoshimura Header Heatshield	1	2115-HS
5	Heatshield Mounting Bolt	2	RC116HSB
6	Medium Exhaust Spring	2	RACE-SPS-1
7	8mm x 30mm Flange Hex Bolt	2	M8X30H
8	Large Washer	2	8MMWASHERL
9	Aluminum Insert for Rubber Grommet	2	ALS-002
10	Rubber Grommet for Muffler Mount	2	Z1022
**	Extra Aluminum Insert for Rubber Grommet	2	ALS-003
**	99dB Sound Insert for Closed Course Racing	1	INS-N
**	RS8 Spark Arrestor Ring	1	RS8-RING-1625
**	Spring Puller Tool	1	ST-200
**	Yoshimura Vinyl Sticker	1	17029
**	Wash Plug	1	347PLUG



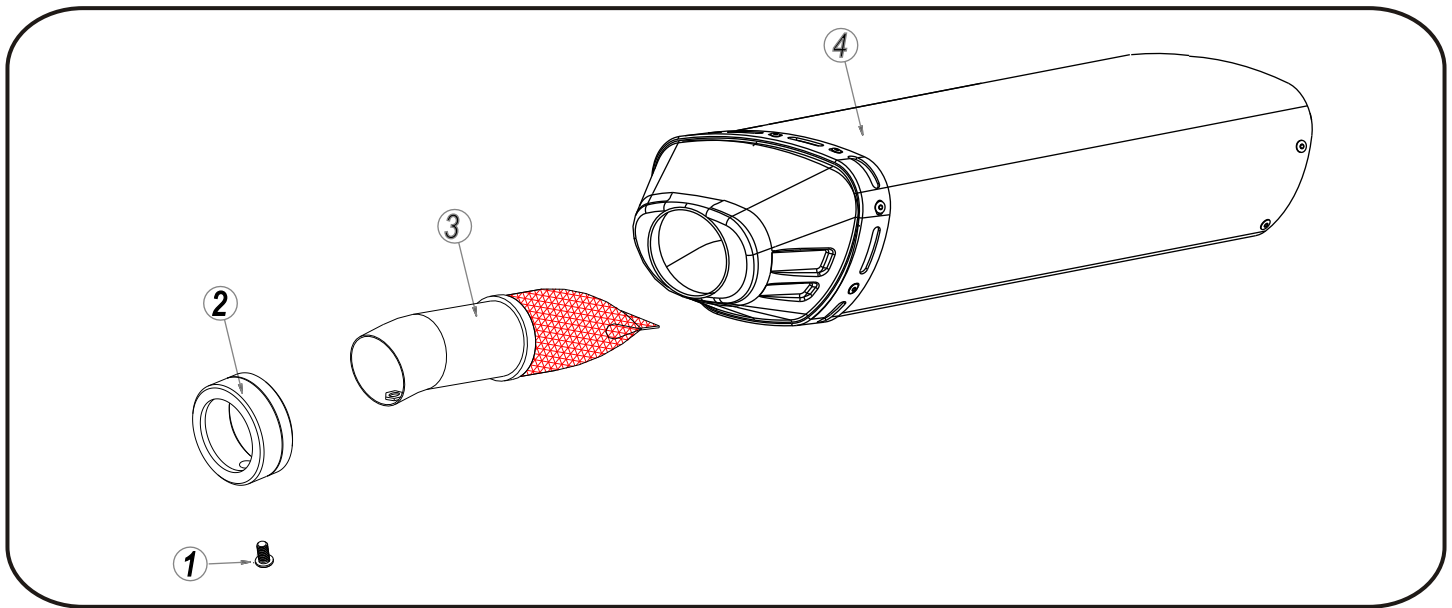
# YOSHIMURA

RESEARCH & DEVELOPMENT OF AMERICA, INC.

5420 DANIELS STREET SUITE A, CHINO, CA 91710 · (800)634-9166 · (909)628-4722 · FACSIMILE (909)591-

[www.yoshimura-rd.com](http://www.yoshimura-rd.com)

## RS-5 Spark Arrester Cleaning Information



Parts Diagram

**Caution:** Muffler can be extremely hot. Let muffler cool down before removing spark arrester.

**Note:** Read through all instructions before beginning disassembly.

### Tools Needed:

- 4mm Allen Key
- Wire Brush
- Pair of Gloves
- Safety Glasses

### Cleaning Steps:

- Using a 4mm Allen key, remove the 6mm x 10mm Button Head Bolt located under the muffler exhaust tip. (See Parts Diagram for location)
- Remove the spark arrester and ring assembly from the muffler.

NO.	DESCRIPTION	QTY	PART #
1	6mm x 22mm Button Head Screw	1	M6X22BHS
2	RS8 Spark Arrester Ring	1	RS8-RING-1500
3	RS5 Low Volume Spark Arrester	1	TEC-SD11
4	RS5 Muffler Assembly	1	**

- Using a wire brush, remove carbon deposits from spark arrester screen. Inspect the screen for excessive wear or damage. If spark arrester is excessively worn or damaged, the spark arrester must be replaced. Cleaning and inspection should be performed after every 60 hours of use.

**CAUTION:** Gloves and Safety Glasses should be worn while cleaning spark arrester.

- Re-install spark arrester and 6mm x 10mm bolt into muffler assembly.
- Install 6mm x 10mm bolt and torque to 1.0 kg.m (7.3 lb-ft).

**NOTE:** It is highly recommended that a low strength "Loc-tite" is used on the bolt.