



# YOSHIMURA

RESEARCH & DEVELOPMENT OF AMERICA, INC.

5420 DANIELS STREET STE A, CHINO CA 91710 · (800) 634-9166 · (909) 628-4722 · FAX (909) 591-2198

WWW.YOSHIMURA-RD.COM

## *Signature Series*

Qualified Manufacturer Declared "Replacement Part"

**1999~2013**

**Honda TRX400EX/X**

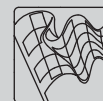
**2270703 (SS/AL)**

**RS-2 Stainless Steel Slip-On**



Signature Series systems are:

- CARB/EPA tail-pipe emissions compliant.
- Marked with appropriate EPA noise labels.
- Independent laboratory tested for EPA new vehicle noise compliance.



CAUTION: The muffler packing on this system **MUST** be replaced every 6-8 hours of use, or every 1-2 motos. Failure to follow recommended muffler re-packing interval can cause muffler damage and may void the warranty.



NOTE: IN THE STATE OF CALIFORNIA, IT IS ILLEGAL TO MODIFY THE EMISSION CONTROL SYSTEM, WHICH INCLUDES THE FUEL INJECTION OF ANY VEHICLE.

**Caution:** Exhaust system can be extremely hot. Let motorcycle cool down before beginning installation.

**Note:** Read through all instructions before beginning installation.

## Tools Needed:

10mm, 11mm (or 7/16"), 12mm sockets  
3/8" ratchet and extension  
12mm wrench  
6mm Allen bit and torque wrench  
Drill

## Installation Steps:

1. Remove seat and fender assembly. (Fig. 1)
  2. Unbolt and remove stock muffler. (Fig. 2)
  3. Install supplied exhaust gasket into Yoshimura tailpipe inlet.
  4. Slip supplied exhaust pipe clamp on Yoshimura tailpipe and install tailpipe with muffler onto stock header.
  5. Bolt tailpipe to lower chassis mount using stock bolt and nut. Torque bolt to 2.5 kg-m (18 lb-ft).
  6. Insert rubber grommet into muffler bracket. Insert aluminum spacer to the inside of rubber grommet. (See parts diagram)
  7. Mount muffler to upper chassis mount using supplied bolt, washer and spacer. (See Parts Diagram)  
Torque bolt to 2.5 kg-m (18 lb-ft).
  8. Using stock hardware bolt Yoshimura tailpipe to lower chassis mount. Torque bolt to 2.5 kg-m (18 lb-ft).
  9. Torque 1.75" exhaust pipe clamp to 1.25 kg-m (9 lb-ft).
  10. Reinstall seat with cowling.
  11. Before starting motorcycle check for proper clearance between new exhaust system and motorcycle. (i.e. rear brake, frame, tire, etc.) If any problem is found, please carefully follow through the installation steps again. If problem still persists, please call Yoshimura Technical Department. at (800)634-9166 / in CA (909)628-4722
- NOTE:** After starting motorcycle, it is normal for new exhaust system and muffler to smoke until oil residue burns off.



Fig. 1

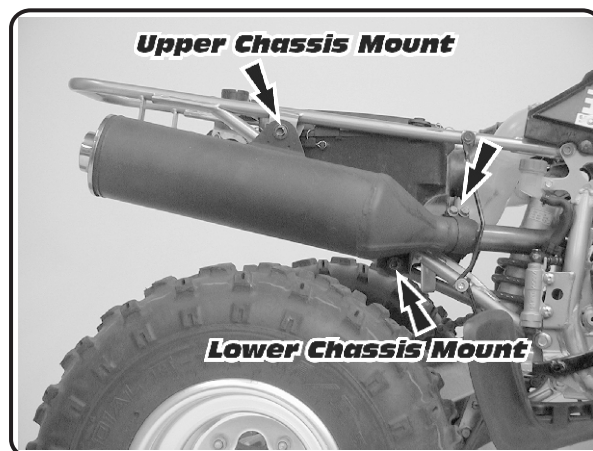
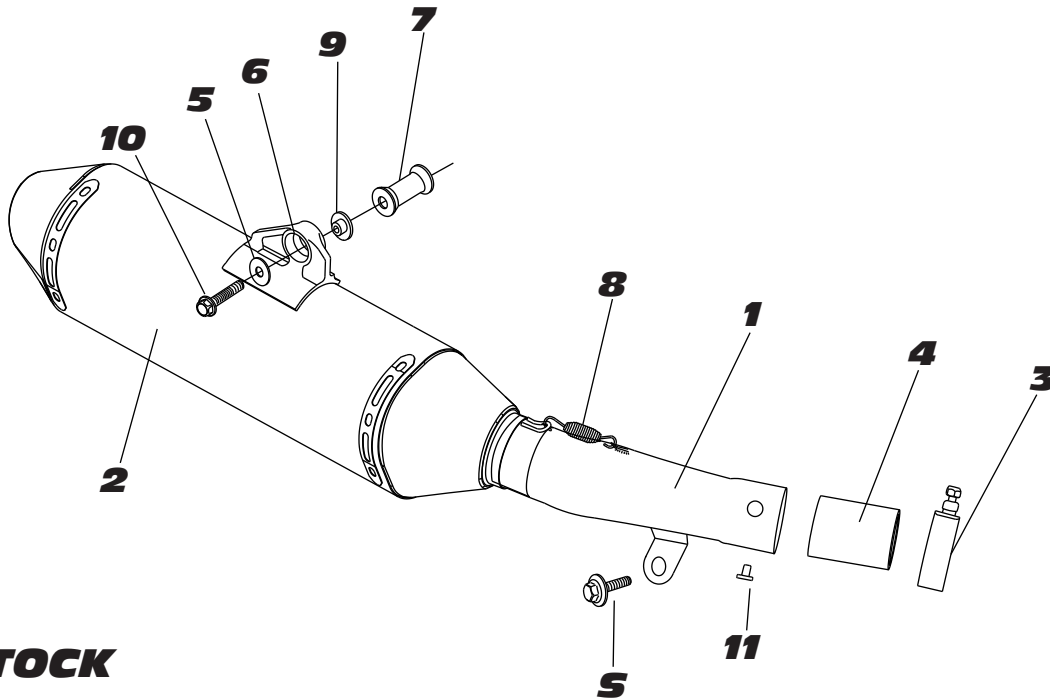


Fig. 2

12. Drill a 13/64" hole thru both ends of midpipe at the center of midpipe's securing hole. (See Fig. 6)  
(Caution: Always wear eye protection when using any power tool.)
13. Install securing rivets in drilled holes, slide collector clamps over rivets and torque collector clamps to 1.25 kg-m (9 lb-ft).

**#2270703**



Parts Diagram

NO.	DESCRIPTION	QTY	PART #
1	Yoshimura Tailpipe Stainless Steel	1	2270-144
2	RS2 Muffler Assembly	1	2270503-RMA
3	1.75" Stainless Steel Exhaust Clamp	1	22059
4	Tailpipe Exhaust Gasket	1	16-5565
5	Large 8mm Washer	1	8MMWASHERL
6	Rubber Grommet	1	Z1022
7	8mm x 29mm Aluminum Spacer	1	8X29SPC
8	2-1/2" Exhaust Spring	2	RACE-SPS-1
9	Aluminum Spacer	1	ALS-002
10	8mm x 55mm Flanged Hex Head Bolt	1	M8X65H
11	Stainless Steel Rivet	1	S-RIVET
**	Spring Puller Tool	1	ST-200
**	Yoshimura Exhaust Plug	1	347PLUG



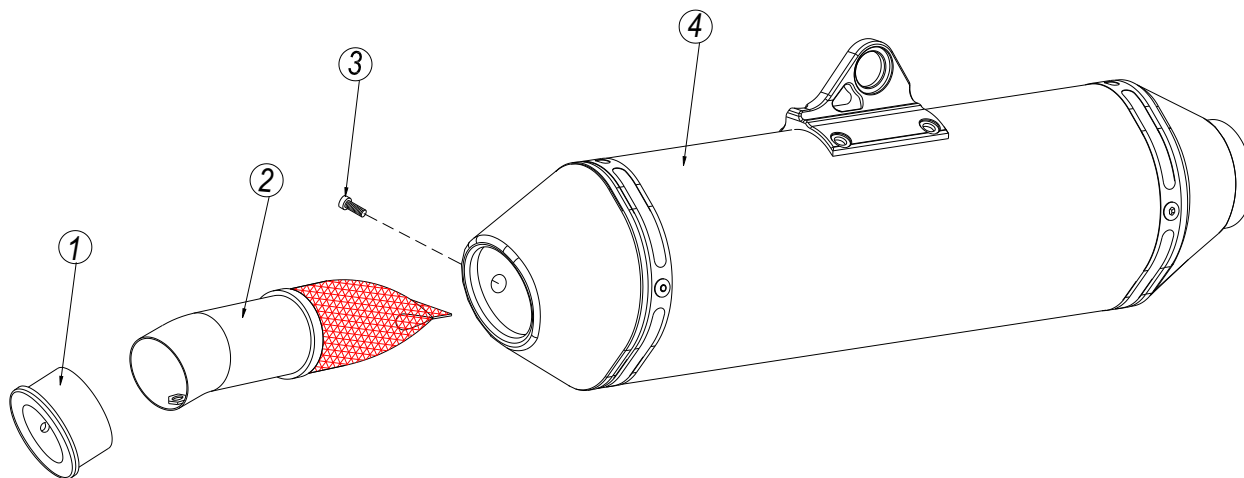
# YOSHIMURA

RESEARCH&DEVELOPMENT OF AMERICA, INC.

5420 DANIELS STREET SUITE A, CHINO, CA 91710 · (800)634-9166 · (909)628-4722 · FACSIMILE (909)591-2198

[www.yoshimura-rd.com](http://www.yoshimura-rd.com)

## Spark Arrester Cleaning Information



Parts Diagram

**Caution:** *Muffler can be extremely hot. Let muffler cool down before removing spark arrester.*

**Note:** *Read through all instructions before beginning disassembly.*

### Tools Needed:

4mm Allen Key  
Wire Brush  
Pair of Gloves  
Safety Glasses

### Cleaning Steps:

- 1 Using a 4mm Allen key, remove the bolt that secures the aluminum ring and spark arrester to the muffler (see Parts Diagram for location).
- 2 Remove the spark arrester from the muffler.

NO.	DESCRIPTION	QTY
1	Aluminum Ring	1
2	Spark Arrester	1
3	Spark Arrester Securing Bolt	1
4	Muffler Assembly	1

- 3 Using a wire brush, remove carbon deposits from spark arrester screen. Inspect the screen for excessive wear or damage. If spark arrester is excessively worn or damaged, the spark arrester must be replaced. Cleaning and inspection should be performed at the same time as muffler repacking. Repacking is recommended every 8-10 hours of riding or 2 motos, whichever comes first.

**CAUTION:** Gloves and safety glasses should be worn while cleaning spark arrester.

- 4 Re-install spark arrester and aluminum ring. Torque the spark arrester securing bolt to 1.0 kg-m (7.3 lb-ft).

**NOTE:** It is recommended that a low strength "Loc-tite" is used on the spark arrester securing bolt.