



YOSHIMURA

RESEARCH & DEVELOPMENT OF AMERICA, INC.

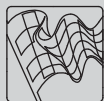
5420 DANIELS STREET STE A, CHINO CA., 91710 · (800) 634-9166 · (909) 628-4722 · FAX (909) 591-2198

www.yoshimura-rd.com

Signature Series

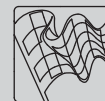
Qualified Manufacturer Declared "Replacement Part"

2008~2009
Can-Am DS450
2515703 (SS/AL)
RS-2 Stainless Steel Slip-On



Signature Series systems are:

- CARB/EPA tail-pipe emissions compliant.
- Marked with appropriate EPA noise labels.
- Independent laboratory tested for EPA new vehicle noise compliance.



CAUTION: The muffler packing on this system **MUST** be replaced every 6-8 hours of use, or after each moto. Failure to follow recommended muffler re-packing interval can cause muffler damage and may void the warranty.



NOTE: IN THE STATE OF CALIFORNIA, IT IS ILLEGAL TO MODIFY THE EMISSION CONTROL SYSTEM, WHICH INCLUDES THE CARBURETORS OF ANY VEHICLE.

Caution: Exhaust system may be extremely hot. Let motorcycle cool down before beginning installation.

Note: Read through all instructions before beginning installation.

Tools Needed:

Metric Socket Set
Metric Combination Wrench Set
11mm (7/16") Deep Socket
Ratchet Wrench and Extension
Torque Wrench

Installation Steps:

- 1 Unbolt and remove stock muffler.
- 2 Install supplied rubber grommet into muffler mounting bracket. Install aluminum insert into rubber grommet. Make sure that the shoulder of the aluminum insert faces toward the frame as shown in the parts diagram on page 3.
- 3 Slip the supplied stainless steel exhaust clamp over Yoshimura tailpipe inlet and install tailpipe with muffler assembly onto stock header, using the stock gasket between the stock header and Yoshimura tailpipe (see Fig 1).

NOTE: It is recommended that a new stock exhaust gasket be used between the stock header and Yoshimura tailpipe (not supplied).

- 4 Bolt tailpipe to chassis mount using both stock and supplied hardware (see Fig. 2 and parts diagram on page 3).
- 5 Mount muffler to stock muffler mount location using the stock and supplied hardware (see Fig. 3 and parts diagram on page 3).
- 6 Torque muffler mount and chassis mount bolt to 2.5 kg-m (18 lb-ft).
- 7 Torque exhaust clamp to 1.25 kg-m (9 lb-ft).
- 8 It is recommended that the muffler and tailpipe be wiped down with rubbing alcohol to remove oil and fingerprints. This will help prevent tarnishing of the finish after the exhaust is heated up.
- 9 Check for proper clearance between new exhaust system and rear suspension (i.e. tire, swing-arm, brake, etc). If any problem is found, please carefully follow through the installation steps again. If problem still persists, please call Yoshimura tech department at (800)634-9166.

NOTE: After starting engine, it is normal for a new exhaust system and muffler to emit smoke until oil residue burns off.

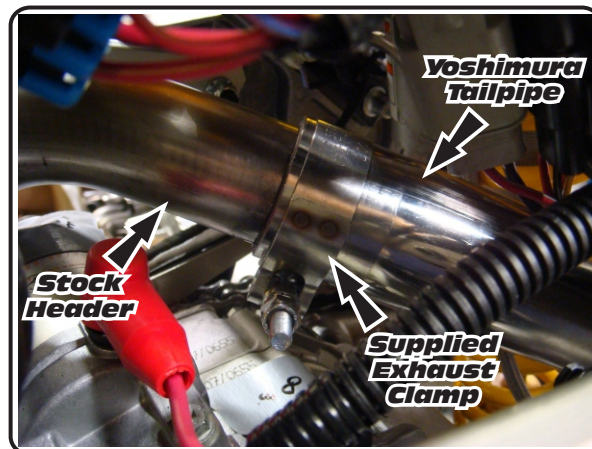


Fig. 1

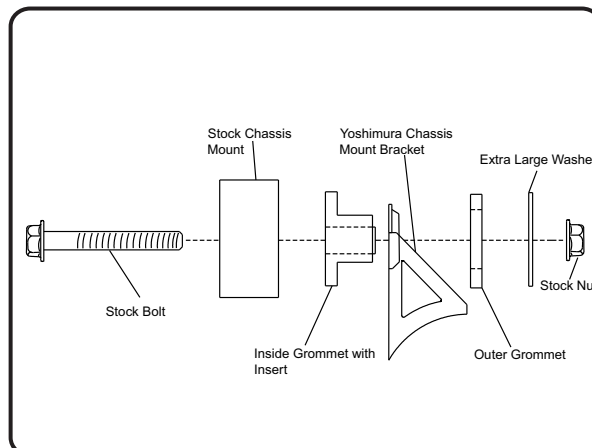


Fig. 2

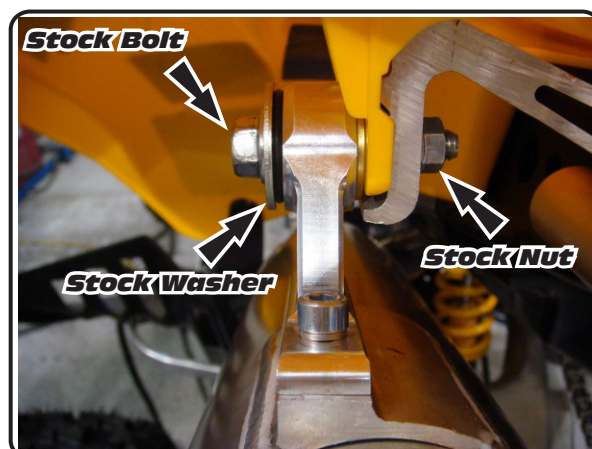
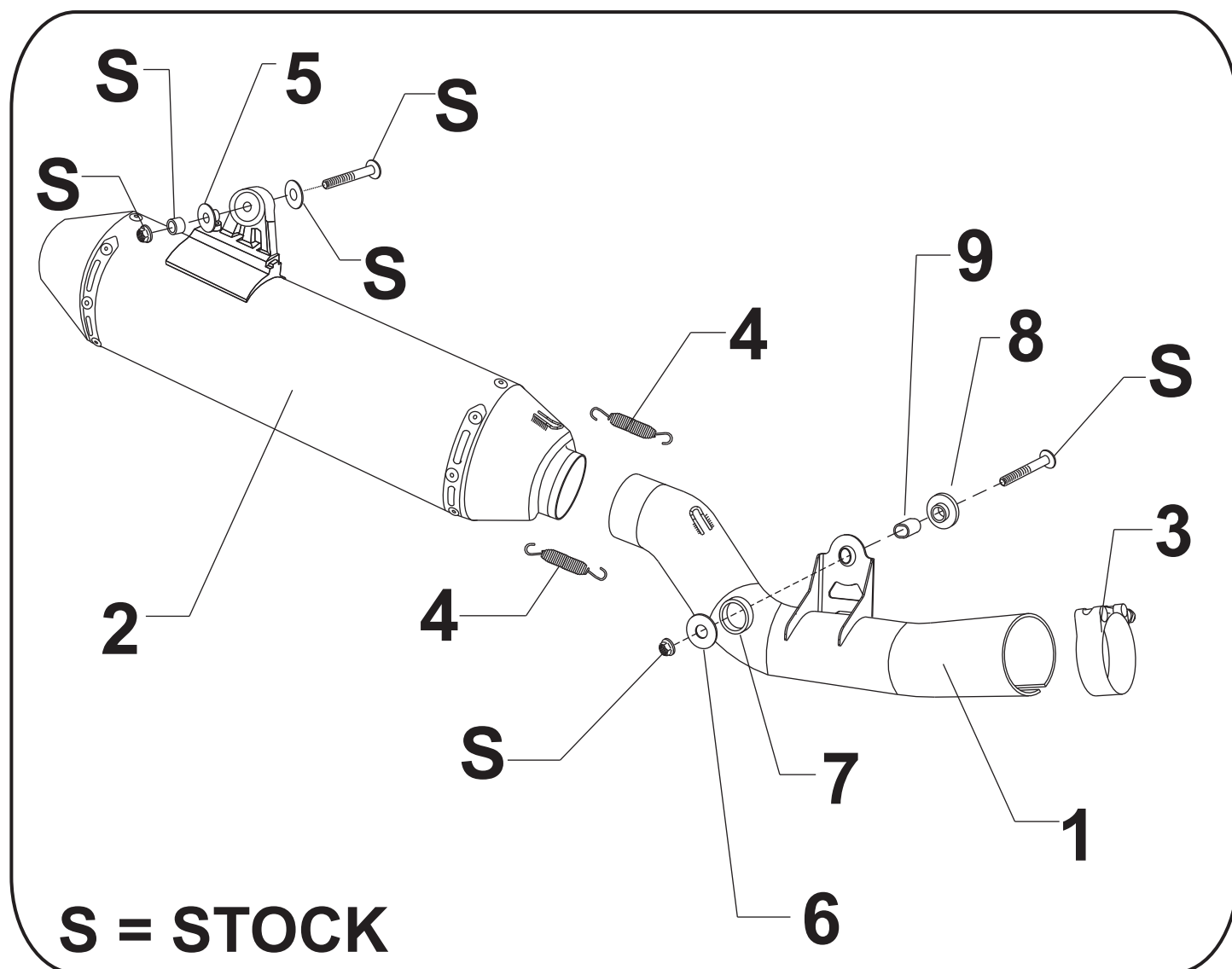


Fig. 3

#2515703



Parts Diagram

NO.	DESCRIPTION	QTY	PART #
1	Yoshimura Stainless Steel Tailpipe	1	2515-152
2	Yoshimura Race Muffler	1	2515503-RMA
3	Stainless Steel Collector Clamp	1	20060
4	Medium Exhaust Springs	2	RACE-SPS-1
5	Aluminum Insert for Rubber Muffler Mount Grommet	1	ALS-001
6	Extra Large Washer	1	8X38W SH
7	Large Rubber Chassis Mount Grommet 1	1	Z1030
8	Large Rubber Chassis Mount Grommet 2	1	Z1031
9	Aluminum Insert for Rubber Chassis Mount Grommet	1	Z1031-SP
**	Rubber Grommet	1	011257-00
**	Yoshimura Spring Puller Tool	1	ST-200
**	Yoshimura Vinyl Sticker	1	17029



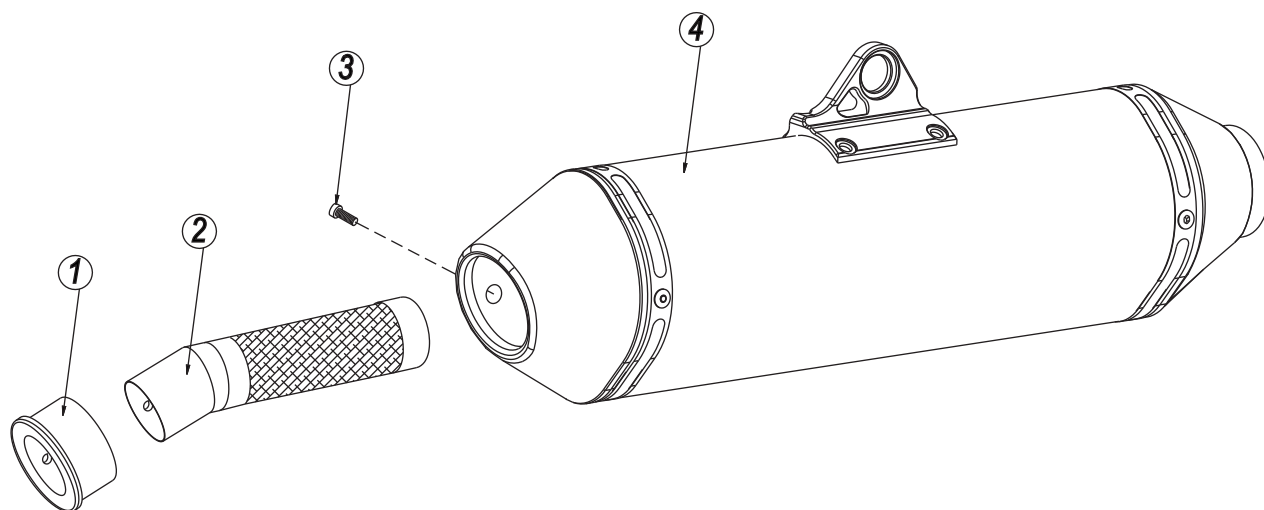
YOSHIMURA

RESEARCH & DEVELOPMENT OF AMERICA, INC.

5420 DANIELS STREET SUITE A, CHINO, CA 91710 · (800)634-9166 · (909)628-4722 · FACSIMILE (909)591-2198

www.yoshimura-rd.com

Spark Arrester Cleaning Information



Parts Diagram

Caution: *Muffler can be extremely hot. Let muffler cool down before removing spark arrester.*

Note: *Read through all instructions before beginning disassembly.*

Tools Needed:

3mm Allen Key
Wire Brush
Pair of Gloves
Safety Glasses

Cleaning Steps:

- 1 Using a 3mm Allen key, remove the bolt that secures the aluminum ring and spark arrester to the muffler (see Parts Diagram for location).
- 2 Remove the spark arrester from the muffler.

NO.	DESCRIPTION	QTY
1	Aluminum Ring	1
2	Spark Arrester	1
3	Spark Arrester Securing Bolt	1
4	Muffler Assembly	1

- 3 Using a wire brush, remove carbon deposits from spark arrester screen. Inspect the screen for excessive wear or damage. If spark arrester is excessively worn or damaged, the spark arrester must be replaced. Cleaning and inspection should be performed after every 60 hours of use.

CAUTION: *Gloves and safety glasses should be worn while cleaning spark arrester.*

- 4 Re-install spark arrester and aluminum ring. Torque the spark arrester securing bolt to 1.0 kg-m (7.3 lb-ft).

NOTE: *It is recommended that a low strength "Loc-tite" is used on the spark arrester securing bolt.*