



YOSHIMURA

RESEARCH & DEVELOPMENT OF AMERICA, INC.

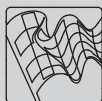
5420 DANIELS STREET STE A, CHINO CA 91710 · (800) 634-9166 · (909) 628-4722 · FAX (909) 591-2198

WWW.YOSHIMURA-RD.COM

Signature Series

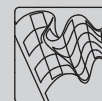
Qualified Manufacturer Declared "Replacement Part"

**2007~2018
Honda CRF150R
2215703 (AL/SS)
RS-2 Stainless Steel Slip-On**



Signature Series systems are:

- CARB/EPA tail-pipe emissions compliant.
- Marked with appropriate EPA noise labels.
- Independent laboratory tested for EPA new vehicle noise compliance.



❖ CAUTION: The muffler packing on this system **MUST** be replaced every 6-8 hours of use, or every 1-2 motos. Failure to follow recommended muffler re-packing interval can cause muffler damage and may void the warranty. ❖

NOTE: IN THE STATE OF CALIFORNIA, IT IS ILLEGAL TO MODIFY THE EMISSION CONTROL SYSTEM, WHICH INCLUDES THE FUEL INJECTION OF ANY VEHICLE.

Caution: Exhaust system may be extremely hot. Let motorcycle cool down before beginning installation.

Note: Read through all instructions before beginning installation.

Tools Needed:

10mm and 12mm Sockets
11mm (7/16") Deep Socket
Ratchet Wrench and Extension
Torque Wrench
Spring Puller Tool

Installation Steps:

1 Remove right rear number plate (see Fig. 1 for fastener locations).

2 Remove stock muffler (see Fig. 2 for fastener locations).

3 Disconnect Yoshimura muffler from Yoshimura tailpipe using the supplied spring puller tool.

4 Slide stainless steel collector clamp over Yoshimura tailpipe and connect the Yoshimura tailpipe to the stock header.

NOTE: Gasket is not used between the header and tailpipe.

5 Bolt tailpipe to chassis mount using stock bolt . Leave loose.

6 Install supplied rubber grommet into muffler mounting bracket. Install aluminum insert into rubber grommet. Make sure that the shoulder of the aluminum insert faces toward the frame (see Fig. 3).

7 Slide Yoshimura muffler onto Yoshimura tailpipe. Mount muffler to stock muffler mount location using supplied 40mm bolt and washer.

8 Connect Yoshimura muffler to Yoshimura tailpipe using the supplied springs and spring puller tool.

9 Torque muffler mount and chassis mount bolt to 2.5 kg-m (18 lb-ft).

10 Torque stainless steel collector clamp to 1.25 kg-m (9 lb-ft).

11 It is recommended that the muffler and tailpipe be wiped down with rubbing alcohol to remove oil and fingerprints. This will help prevent tarnishing of the finish after the exhaust is heated up.



Fig. 1

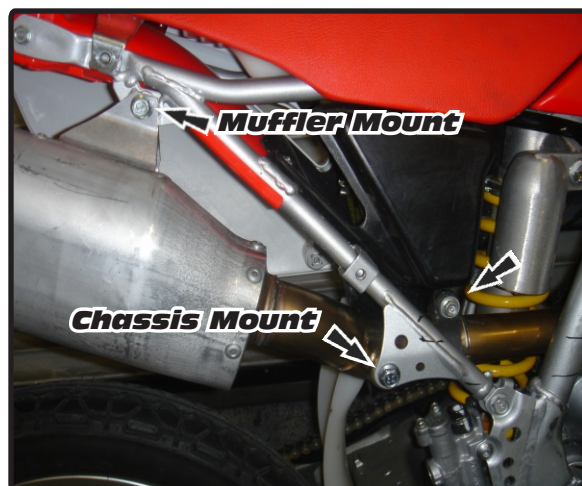


Fig. 2

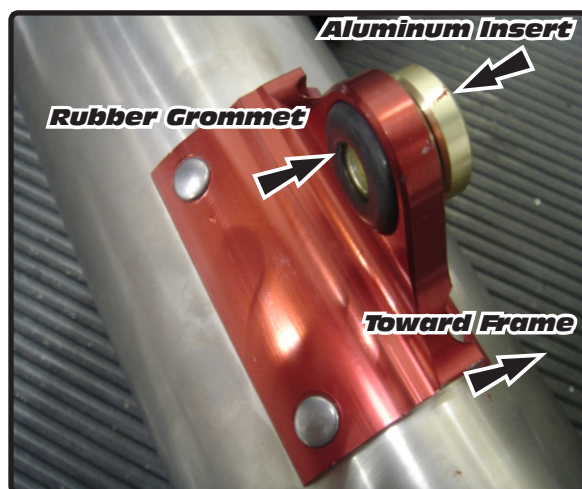


Fig.3

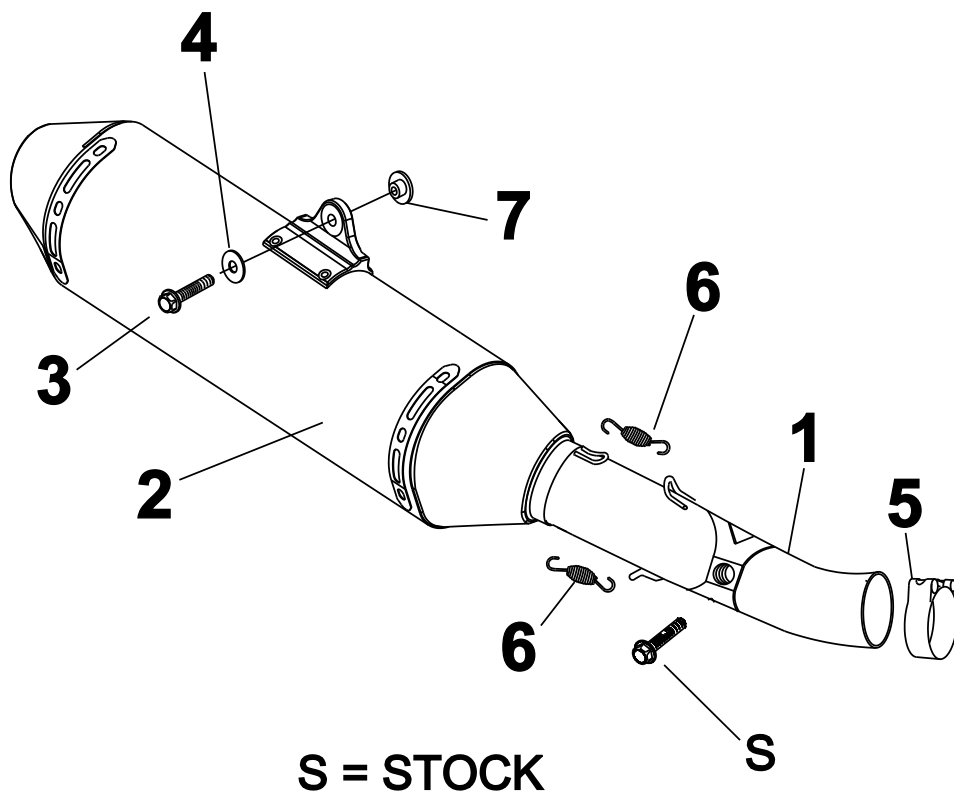


Fig. 4

- 12 Before starting motorcycle, check for proper clearance between new exhaust system and rear suspension (i.e. tire, swing-arm, brake, rear shock, etc). If any problem is found, please carefully follow through the installation steps again. If problem still persists, please call Yoshimura technical department at (800) 634-9166 / in CA (909) 628-4722.
- 13 Trim the number plate as shown in figure 4. The dotted line in figure 4 shows where the plastic must be cut.
- 14 Reinstall number plate.

NOTE: After starting motorcycle, it is normal for new exhaust system and muffler to emit smoke until oil residue burns off.

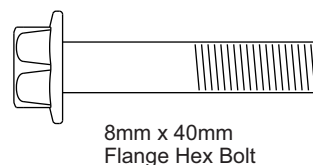
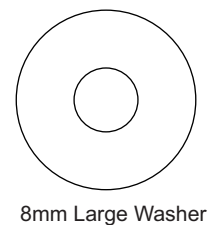
#2215703



Parts Diagram

Nuts and Bolts Guide (Actual Size):

NO.	DESCRIPTION	QTY	PART #
1	Yoshimura Stainless Steel Tailpipe	1	2215-152
2	Yoshimura Race Muffler	1	2215503-RMA
3	8mm X 40mm Bolt	1	M8X40H
4	Large 8mm Washer	1	8MMWASHERL
5	Stainless Steel Collector Clamp	1	22057
6	Small Exhaust Springs	2	RACE-SPX-1
7	Aluminum Insert	1	ALS-002
**	Rubber gromment	1	Z1022
**	Yoshimura Spring Puller	1	ST-200
**	Yoshimura Wash Plug	1	347PLUG
**	Yoshimura Sticker Sheet	1	17029





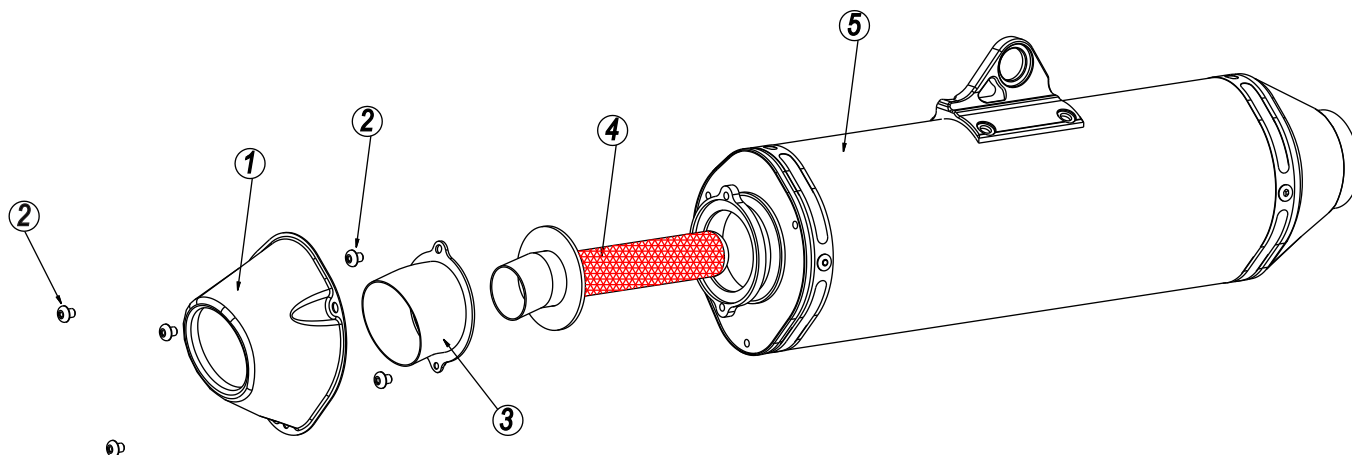
YOSHIMURA

RESEARCH & DEVELOPMENT OF AMERICA, INC.

5420 DANIELS STREET SUITE A, CHINO, CA 91710 · (800)634-9166 · (909)628-4722 · FACSIMILE (909)591-2198

www.yoshimura-rd.com

Spark Arrester Cleaning Information



Parts Diagram

Caution: *Muffler can be extremely hot. Let muffler cool down before removing spark arrester.*

Note: *Read through all instructions before beginning disassembly.*

NO.	DESCRIPTION	QTY
1	Cone Cap	1
2	5mm x 10mm Button Head Bolt	5
3	Exhaust Tip	1
4	Spark Arrester	1
5	Muffler Assembly	1

Tools Needed:

3mm Allen Key
Wire Brush
Pair of Gloves
Safety Glasses

Cleaning Steps:

- 1 Using a 3mm Allen key, remove the three 5mm x 10mm button head bolts that secure the cone cap to the muffler (see Parts Diagram for location).
- 2 Remove the two 5mm x 10mm button head bolts that secure the spark arrester to the muffler. Remove the spark arrester from the muffler.

- 3 Using a wire brush, remove carbon deposits from spark arrester screen. Inspect the screen for excessive wear or damage. If spark arrester is excessively worn or damaged, the spark arrester must be replaced. Cleaning and inspection should be performed after every 60 hours of use.

CAUTION: *Gloves and Safety Glasses should be worn while cleaning spark arrester.*

- 4 Re-install spark arrester and cone cap. Torque the 5mm x 10mm bolts to 1.0 kg-m (7.3 lb-ft).

NOTE: *It is recommended that a low strength "Loc-tite" is used on the 5mm x 10mm bolts.*