



# YOSHIMURA

RESEARCH & DEVELOPMENT OF AMERICA, INC.

5420 DANIELS STREET STE A, CHINO CA 91710 · (800) 634-9166 · (909) 628-4722 · FAX (909) 591-2198

WWW.YOSHIMURA-RD.COM

## *Signature Series*

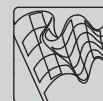
Qualified Manufacturer Declared "Replacement Part"

**2007~2009**  
**Yamaha YZ450F**  
**2346703 (SS/AL)**  
**RS-2 Stainless Steel Slip-On**



Signature Series systems are:

- CARB/EPA tail-pipe emissions compliant.
- Marked with appropriate EPA noise labels.
- Independent laboratory tested for EPA new vehicle noise compliance.



CAUTION: The muffler packing on this system **MUST** be replaced every 6-8 hours of use, or every 1-2 motos. Failure to follow recommended muffler re-packing interval can cause muffler damage and may void the warranty.



NOTE: IN THE STATE OF CALIFORNIA, IT IS ILLEGAL TO MODIFY THE EMISSION CONTROL SYSTEM, WHICH INCLUDES THE FUEL INJECTION OF ANY VEHICLE.

**Caution:** Exhaust system may be extremely hot. Let motorcycle cool down before beginning installation.

**Note:** Read through all instructions before beginning installation.

## Tools Needed:

8mm, 10mm, and 12mm Sockets  
11mm (7/16") Deep Socket  
Ratchet Wrench and Extension  
Torque Wrench

## Installation Steps:

1. Remove right rear number plate (see Fig. 1 for fastener locations).
2. Remove stock muffler (see Fig. 2 for fastener locations).
3. Install supplied rubber grommet into muffler mounting bracket. Install aluminum insert into rubber grommet. Make sure that the shoulder of the aluminum insert faces toward the frame (see Fig. 3).

4. Slip stainless steel exhaust clamp over Yoshimura tailpipe and install tailpipe with muffler assembly onto stock header.

**NOTE:** Stock gasket is not used between the stock header and the Yoshimura tailpipe. The stock gasket must be removed from the stock header before the Yoshimura tailpipe and muffler assembly is installed onto the stock header.

5. Bolt tailpipe to chassis mount using the stock bolt, Leave loose.
6. Mount muffler to stock muffler mount location using the stock bolt and washer.
7. Torque muffler mount and chassis mount bolt to 2.5 kg-m (18 lb-ft).
8. Torque exhaust clamp to 1.25 kg-m (9 lb-ft).
9. It is recommended that the muffler and tailpipe be wiped down with rubbing alcohol to remove oil and fingerprints. This will help prevent tarnishing of the finish after the exhaust is heated up.
10. Reinstall number plate and check for clearance.
11. Check for proper clearance between new exhaust system and rear suspension (ex. tire, swing-arm, brake, etc). If any problem is found, please carefully follow through the installation steps again. If problem still persists, please call Yoshimura technical department at (800)634-9166.

**NOTE:** After starting motorcycle, it is normal for a new exhaust system and muffler to emit smoke until oil residue burns off.

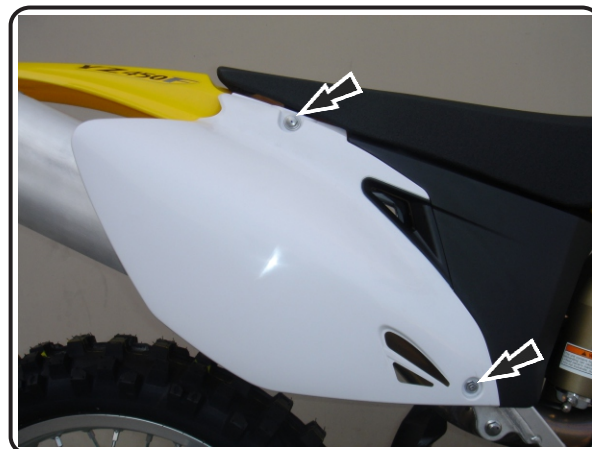


Fig. 1

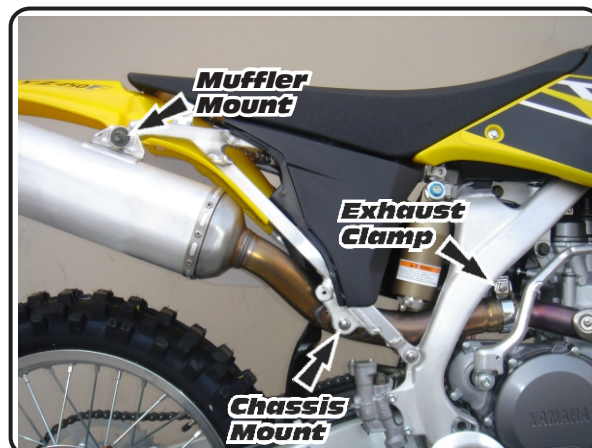


Fig. 2

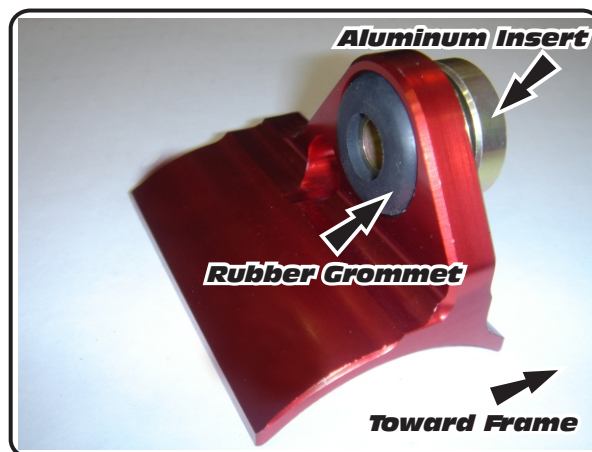
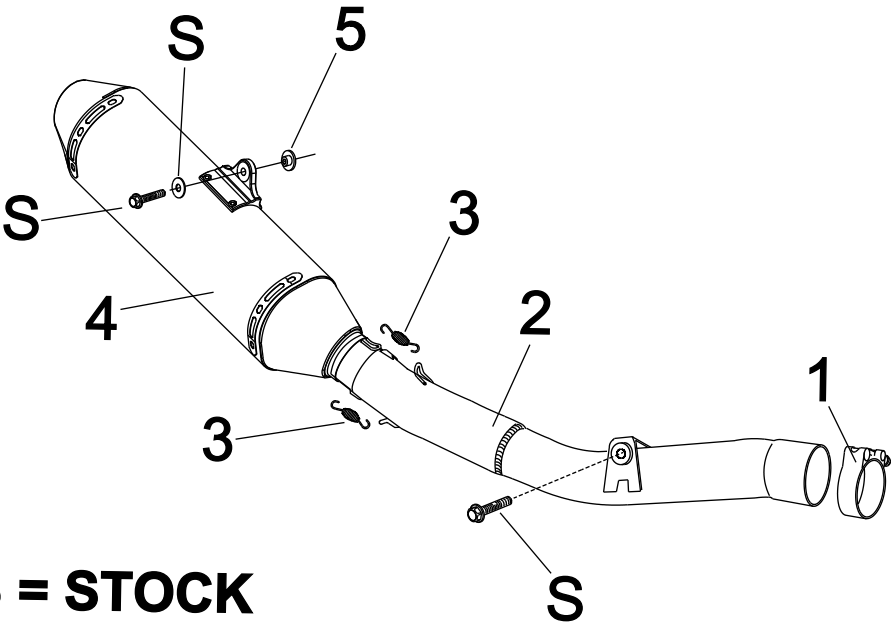


Fig. 3

**#2346703**



Parts Diagram

NO.	DESCRIPTION	QTY	PART #
1	Stainless Steel Collector Clamp	1	22059
2	Yoshimura Stainless Steel Tailpipe	1	2346-152
3	Medium Exhaust Springs	2	RACE-SPS-1
4	Yoshimura Race Muffler	1	2345503-RMA
5	Aluminum Insert for Rubber Grommet	1	ALS-002
**	Rubber grommet	1	Z1022
**	Spring Puller Tool	1	ST-200
**	Yoshimura Vinyl Sticker	2	17028-BLK



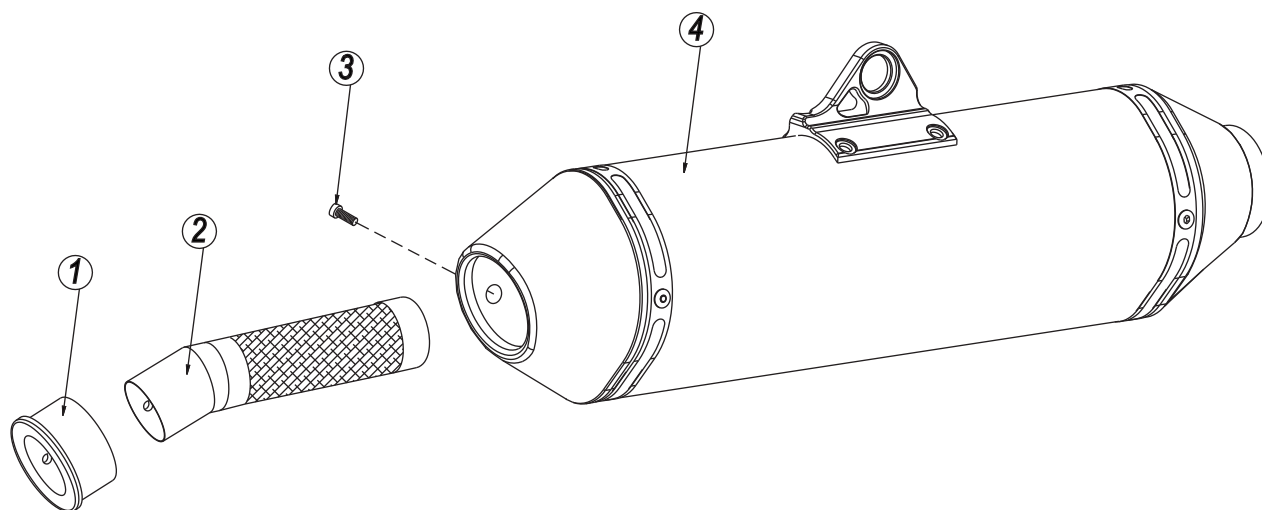
# YOSHIMURA

RESEARCH & DEVELOPMENT OF AMERICA, INC.

5420 DANIELS STREET SUITE A, CHINO, CA 91710 · (800)634-9166 · (909)628-4722 · FACSIMILE (909)591-2198

[www.yoshimura-rd.com](http://www.yoshimura-rd.com)

## Spark Arrester Cleaning Information



Parts Diagram

**Caution:** *Muffler can be extremely hot. Let muffler cool down before removing spark arrester.*

**Note:** *Read through all instructions before beginning disassembly.*

### Tools Needed:

4mm Allen Key  
Wire Brush  
Pair of Gloves  
Safety Glasses

### Cleaning Steps:

- 1 Using a 4mm Allen key, remove the bolt that secures the aluminum ring and spark arrester to the muffler (see Parts Diagram for location).
- 2 Remove the spark arrester from the muffler.

NO.	DESCRIPTION	QTY
1	Aluminum Ring	1
2	Spark Arrester	1
3	Spark Arrester Securing Bolt	1
4	Muffler Assembly	1

- 3 Using a wire brush, remove carbon deposits from spark arrester screen. Inspect the screen for excessive wear or damage. If spark arrester is excessively worn or damaged, the spark arrester must be replaced. Cleaning and inspection should be performed after every 60 hours of use.

**CAUTION:** *Gloves and safety glasses should be worn while cleaning spark arrester.*

- 4 Re-install spark arrester and aluminum ring. Torque the spark arrester securing bolt to 1.0 kg-m (7.3 lb-ft).

**NOTE:** *It is recommended that a low strength "Loc-tite" is used on the spark arrester securing bolt.*