



YOSHIMURA

RESEARCH&DEVELOPMENT OF AMERICA, INC.

5420 DANIELS STREET STE A, CHINO CA., 91710 · (800)634-9166 · (909)628-4722 · FACSIMILE (909)591-2198

www.yoshimura-rd.com

YOSHIMURA PERFORMANCE EXHAUST SYSTEM

**KAWASAKI
2008-2011
ZX-14**

1426265

TRS RACE SLIP-ON SYSTEM WITH STAINLESS STEEL SLEEVE



**THIS PRODUCT IS DESIGNED FOR USE IN CLOSED COURSE
RACING AND IS NOT INTENDED FOR HIGHWAY USE.**



NOTE: IN THE STATE OF CALIFORNIA, IT IS ILLEGAL TO MODIFY THE EMISSION CONTROL SYSTEM. WHICH INCLUDES THE CARBURETORS OF ANY VEHICLE.

Caution: *Exhaust system can be extremely hot. Let motorcycle cool down before beginning installation.*

Note: *Read through all instructions before beginning installation.*

Tools Needed:

Metric Socket Set 7/16" Deep Socket 3/8" Ratchet and Extension
Metric Allen Wrench Set Torque Wrench

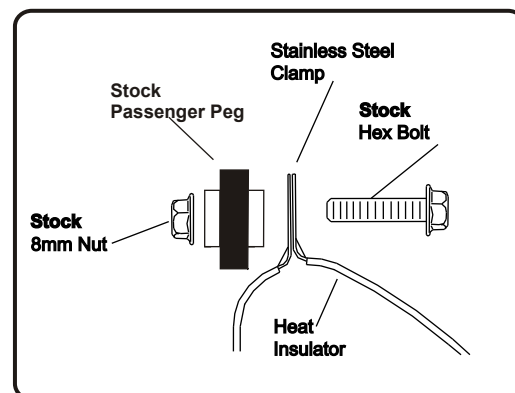
Installation Steps:

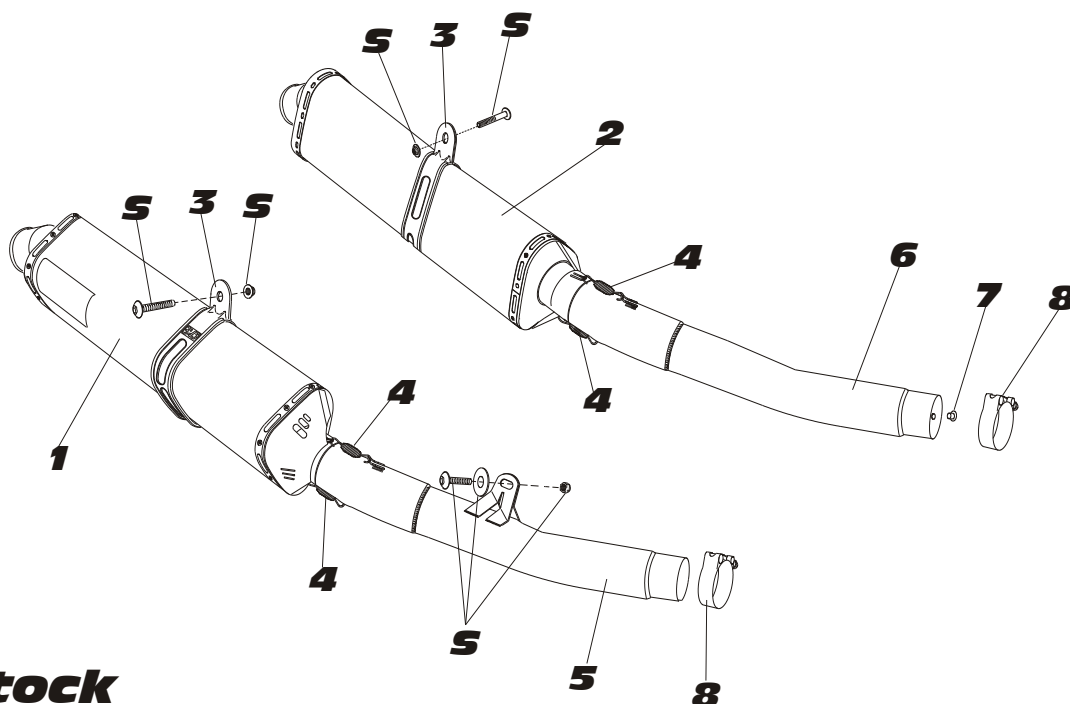
- 1 Remove lower rear cowling to ease removal of stock tailpipes.
- 2 Remove left and right stock mufflers and tailpipes.
- 3 Apply rubber heat insulators to inside of muffler clamps and slide muffler clamps onto mufflers.
- 4 Slide supplied exhaust clamps over Yoshimura tailpipe inlets.
- 5 Install Yoshimura slip-ons using stock hardware (extra large stock muffler mount washers will not be used).

NOTE: Yoshimura muffler clamps mount on the outside of the stock muffler mounting locations. Yoshimura tailpipe brackets mount on the inside of the stock tailpipe mount locations (see Fig. 1).

- 6 Torque muffler mounting bolts and tailpipe mounting bolts to 2.5 kgf-m (18 lb-ft).
- 7 Near the inlet of the left Yoshimura tailpipe is a hole. Drill a 13/64" hole in the stock header, using the hole in the left tailpipe as a guide. Install supplied collector rivet so the head of the rivet is flush on the tailpipe. Center the exhaust clamp over the rivet and torque left and right exhaust clamps to 1.1 kgf-m (8.0 lb-ft).
- 8 It is recommended that the entire exhaust system be wiped down with rubbing alcohol to remove oil and fingerprints. This will help prevent tarnishing of the finish after the exhaust is heated up.
- 9 Before starting motorcycle, check for proper clearance between new exhaust system and motorcycle (i.e. swing-arm, fairings etc.). If any problem is found, please carefully follow through the installation steps again. If problem still persists, please call Yoshimura technical department at (800) 634-9166/ in CA (909) 628-4722.

Note: After starting motorcycle, it is normal for new exhaust system to emit smoke until oil residue burns off.



#1426265


Parts Diagram

NO.	DESCRIPTION	QTY	PART #
1	Yoshimura Muffler Assembly (Right Side) with Stainless Steel Sleeve	1	SRTRS166W
2	Yoshimura Muffler Assembly (Left Side) with Stainless Steel Sleeve	1	SRTRS166WL
3	Stainless Steel Muffler Clamp Stainless Steel or Titanium Sleeve uses	2	CTS104X
4	Medium Race Exhaust Spring	4	RACE-SPS-1
5	Yoshimura Tailpipe (Right Side)	1	1426-427
6	Yoshimura Tailpipe (Left Side)	1	1426-426
7	Securing Rivet	1	S-RIVET
8	Stainless Steel Exhaust Clamp	2	20063
**	Yoshimura Sticker Kit Sheet	1	17029
**	Muffler Clamp Heat Insulator	2	HT SHLDTRS
**	Low Volume Sound Insert	2	TRS-INS-BK
**	Instructions Sheet	1	INST KIT