



# YOSHIMURA

RESEARCH&DEVELOPMENT OF AMERICA, INC.

5420 DANIELS STREET STE A, CHINO CA., 91710 · (800) 634-9166 · (909) 628-4722 · FAX (909) 591-2198

[www.yoshimura-rd.com](http://www.yoshimura-rd.com)

## Street Series

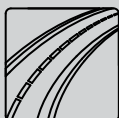
Qualified Manufacturer Declared "Replacement Part"

2015~2016

**BMW S1000RR**

**15202MP720 (TI/CF)**

**Alpha Taper Slip-On**



All Street Series systems are:

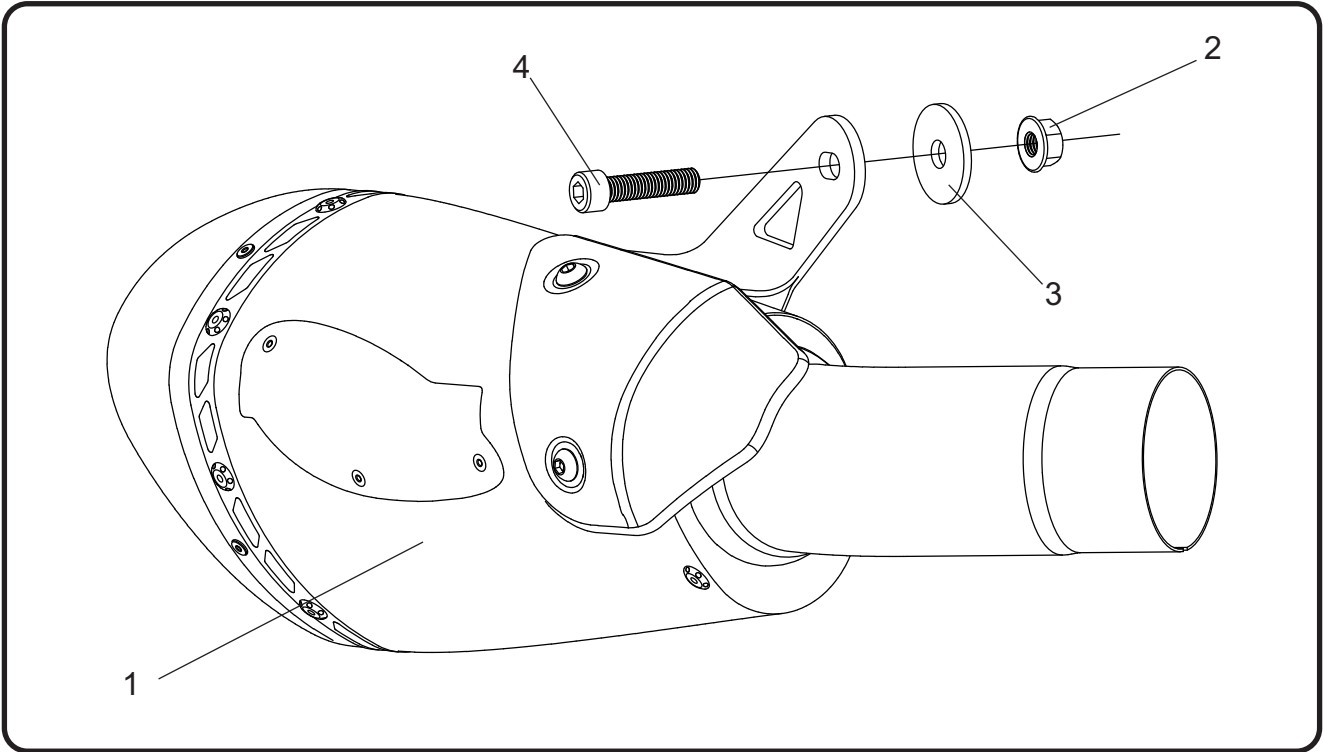
- Slip-on/Bolt-on applications that do not require tampering with the vehicle's emissions control system.
- CARB/EPA tail-pipe emissions compliant.
- Marked with appropriate EPA noise labels.
- Not tested for EPA new vehicle noise compliance.



✘ You must know how to remove and replace your stock exhaust in order to install this product otherwise have it installed by a professional mechanic. Keep all stock parts from your existing system as some components may be necessary to install your new Yoshimura exhaust depending on the application. Read through all instructions before beginning installation. Exhaust system can be extremely hot. Let motorcycle cool down before beginning installation. Always wear hand and eye protection and take precautionary measures to avoid injury. ✘

NOTE: IN THE STATE OF CALIFORNIA, IT IS ILLEGAL TO MODIFY THE EMISSION CONTROL SYSTEM, WHICH INCLUDES THE CARBURETORS OF ANY VEHICLE.

## Assembly Diagram



No.	Item	Description	Qty.
1	15202MP720-RMA	Yoshimura Titanium Muffler	1
2	8MMNUT	8mm Flange Nut	1
3	8MMWASHERXL	8mm Flat Washer XL	1
4	M8X35	8mmX35mm Bolt	1
**	17029	Yoshimura Sticker Kit Sheet	1

\*\* Not shown in diagram.

**CAUTION:** Exhaust system can be extremely hot. Let motorcycle cool down before beginning installation. Always wear hand and eye protection and take precautionary measures to avoid injury.

**WARNING:** Always properly support vehicle with a stand and/or lift when servicing or performing any work. Unstable vehicles may present dangerous conditions and may cause property damage and/or personal injury.

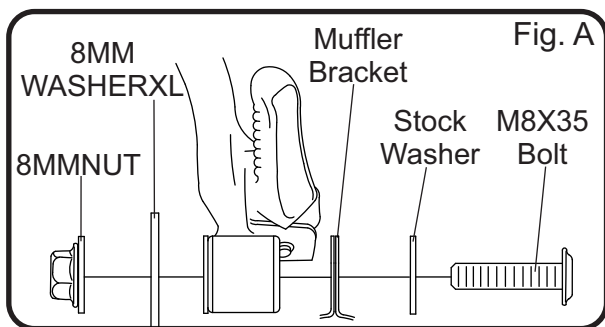
**NOTE:** Read through all instructions before beginning installation.

## Removal

1. Loosen the exhaust clamp between the header and muffler connection.
2. While securely supporting the stock muffler assembly, remove the muffler mount bolt and carefully remove the stock muffler assembly.
3. Remove the stock exhaust clamp from the muffler assembly as it will be re-used with the Yoshimura slip-on system.

## Installation

1. Install the stock exhaust clamp onto Yoshimura muffler assembly tailpipe.
2. Install Yoshimura (No. 1) 15202MP720-RMA, muffler assembly onto the stock header outlet.
3. Align muffler bracket to the stock muffler mount and secure using the (No. 4) M8X35, bolt, stock washer, (No. 3) 8MMWASHERXL, washer, and (No. 2) 8MMNUT, nut as shown in Fig. A.



4. Torque (No. 4) M8X35, bolt to 23 Nm (2.3 kg-m, 17 ft-lb).

5. Torque exhaust clamp to factory specification.
6. Before starting vehicle, check for proper clearance between new exhaust system and rear suspension (i.e. tire, swingarm, brakes, rear shock, and etc.) If any problem is found, please carefully follow through the installation steps again. If problem still persists, please call Yoshimura Tech Department at (800) 634-9166 / in CA (909) 628-4722.
7. It is recommended that the muffler and tailpipe be wiped down with rubbing alcohol to remove oil and fingerprints. This will help prevent tarnishing of the finish after the exhaust is heated up.

Note: After starting vehicle, it is normal for new exhaust system and muffler to emit smoke until oil residue burns off.