



YOSHIMURA

RESEARCH & DEVELOPMENT OF AMERICA, INC.

5420 DANIELS STREET STE A, CHINO CA 91710 · (800) 634-9166 · (909) 628-4722 · FAX (909) 591-2198

WWW.YOSHIMURA-RD.COM

Signature Series

Qualified Manufacturer Declared "Replacement Part"

2006-2018

Yamaha Raptor 700

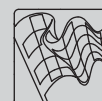
2388713 (SS/AL)

RS-2 Stainless Steel Slip-On



Signature Series systems are:

- CARB/EPA tail-pipe emissions compliant.
- Marked with appropriate EPA noise labels.
- Independent laboratory tested for EPA new vehicle noise compliance.



CAUTION: The muffler packing on this system **MUST** be replaced every 6-8 hours of use, or every 1-2 motos. Failure to follow recommended muffler re-packing interval can cause muffler damage and may void the warranty.



NOTE: IN THE STATE OF CALIFORNIA, IT IS ILLEGAL TO MODIFY THE EMISSION CONTROL SYSTEM, WHICH INCLUDES THE FUEL INJECTION OF ANY VEHICLE.

Caution: Exhaust system can be extremely hot. Let motorcycle cool down before beginning installation.

Note: Read through all instructions before beginning installation.

Tools Needed:

Metric Socket Set
Ratchet and Extension
6mm Allen Wrench
#3 Phillips Screwdriver
Torque Wrench

Installation Steps:

- 1 Unbolt and remove stock muffler and rear heat shield (see Fig. 1 and Fig. 2 for bolt locations).
- 2 Install supplied rubber grommets into aluminum muffler mounting brackets. Install aluminum inserts into rubber grommets (make sure shoulder of aluminum insert faces toward the frame, see Fig. 3).
- 3 Slide supplied exhaust clamp over the inlet of the Yoshimura tailpipe and install Yoshimura tailpipe and muffler onto stock header.
- 4 Mount muffler to chassis using supplied bolts, washers, and aluminum spacers (see Parts Diagram on page 3).
- 5 Torque exhaust clamp to 1.25 kg-m (9 lb-ft).
- 6 Torque muffler mounting bolts to 2.5 kg-m (18 lb-ft).
- 7 Install stock rear heatshield onto tailpipe using supplied bolts and heatshield mounting clips (stock heatshield washers are not used).
- 8 It is recommended that the slip-on system be wiped down with rubbing alcohol to remove oil and fingerprints. This will help prevent tarnishing of the finish after the exhaust is heated up.
- 9 Before starting engine check for proper clearance between new exhaust system and chassis body work or any moving parts. (i.e. rear brake, frame, tire, bodywork etc.) If any problem is found, please carefully follow through the installation steps again. If problem still persists, please call Yoshimura technical department at (800)634-9166, in CA (909)628-4722.

NOTE: After starting motorcycle, it is normal for new exhaust system and muffler to emit smoke until oil residue burns off.

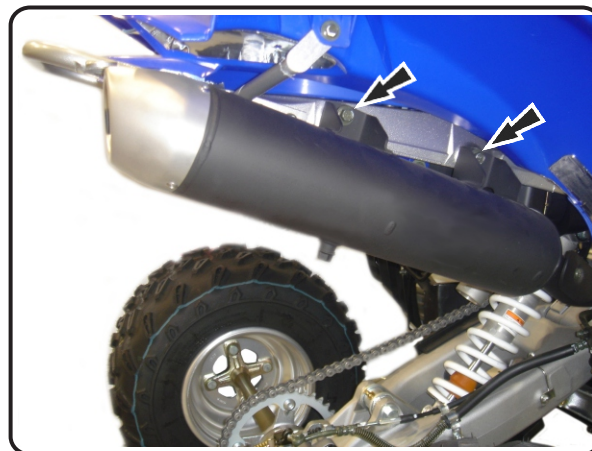


Fig. 1

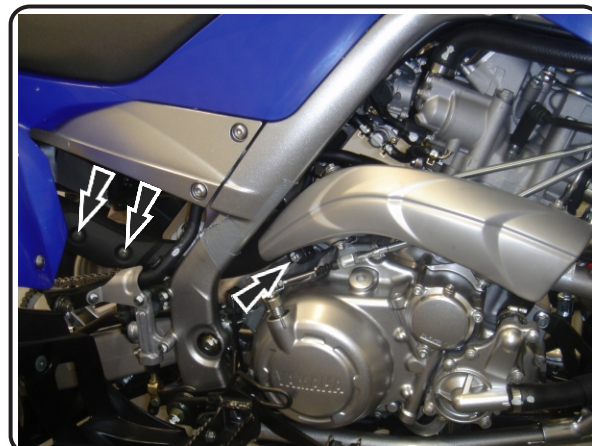


Fig. 2

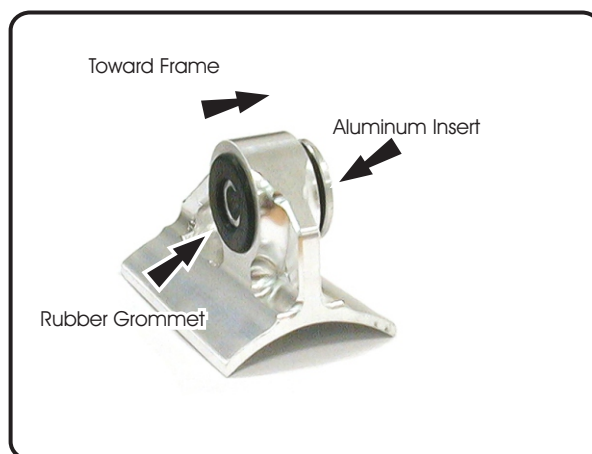
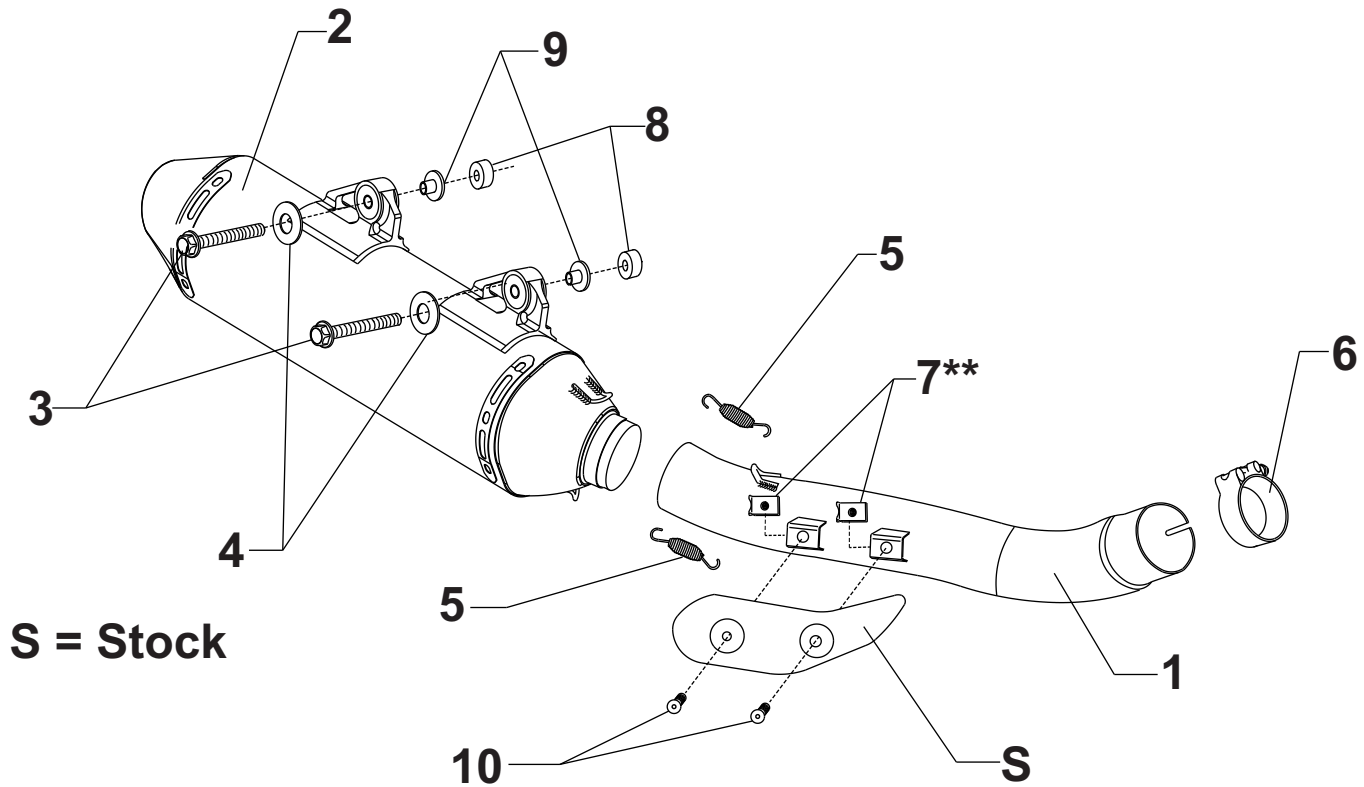


Fig. 3

#2388713

**Slide U-Nut toward front of vehicle.



Parts Diagram

NO.	DESCRIPTION	QTY	PART #
1	Yoshimura Stainless Steel Tailpipe	1	2388-152-A
2	Yoshimura RS-2 Muffler	1	2388513-RMA
3	8mm x 45mm Flange Hex Bolt	2	M8X45H
4	Large Washer	2	8MMWASHERL
5	Medium Exhaust Spring	2	RACE-SPS-1
6	Stainless Steel Exhaust Clamp	1	22059
7	Heatshield Mounting Clips	2	M6X1U
8	Aluminum Muffler Mount Spacers	2	8X10SPC
9	Aluminum Insert for Rubber Grommet	2	ALS-001
10	6mm x 16 mm Button Head Screw	2	M6X16BHS
**	Rubber Grommet for Muffler Mount	2	011257-00
**	Yoshimura Spring Puller Tool	1	ST-200
**	Yoshimura Vinyl Sticker	1	17029



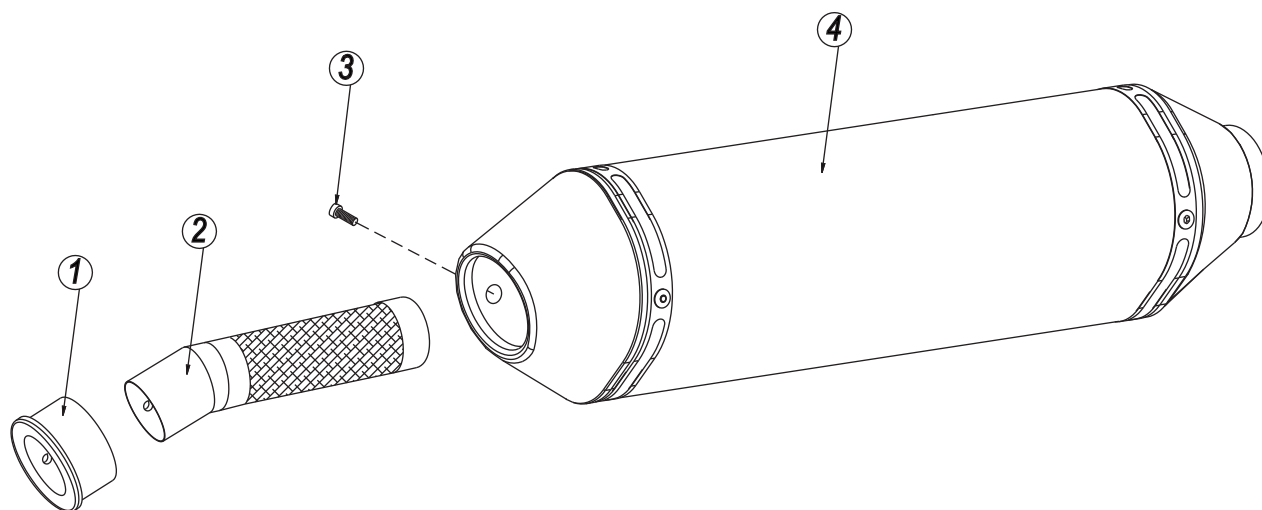
YOSHIMURA

RESEARCH & DEVELOPMENT OF AMERICA, INC.

5420 DANIELS STREET SUITE A, CHINO, CA 91710 · (800)634-9166 · (909)628-4722 · FACSIMILE (909)591-2198

www.yoshimura-rd.com

Spark Arrester Cleaning Information



Parts Diagram

Caution: *Muffler can be extremely hot. Let muffler cool down before removing spark arrester.*

Note: *Read through all instructions before beginning disassembly.*

Tools Needed:

3mm Allen Key
Wire Brush
Pair of Gloves
Safety Glasses

Cleaning Steps:

- 1 Using a 3mm Allen key, remove the bolt that secures the aluminum ring and spark arrester to the muffler (see Parts Diagram for location).
- 2 Remove the spark arrester from the muffler.

NO.	DESCRIPTION	QTY
1	Aluminum Ring	1
2	Spark Arrester	1
3	Spark Arrester Securing Bolt	1
4	Muffler Assembly	1

- 3 Using a wire brush, remove carbon deposits from spark arrester screen. Inspect the screen for excessive wear or damage. If spark arrester is excessively worn or damaged, the spark arrester must be replaced. Cleaning and inspection should be performed after every 60 hours of use.

CAUTION: *Gloves and safety glasses should be worn while cleaning spark arrester.*

- 4 Re-install spark arrester and aluminum ring. Torque the spark arrester securing bolt to 1.0 kg-m (7.3 lb-ft).

NOTE: *It is recommended that a low strength "Loc-tite" is used on the spark arrester securing bolt.*